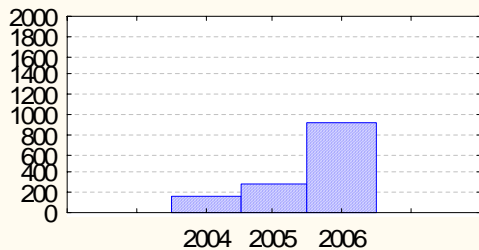
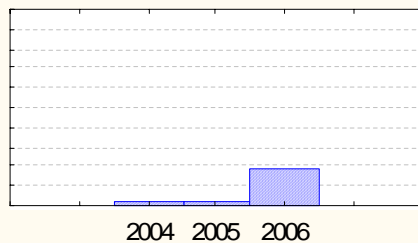


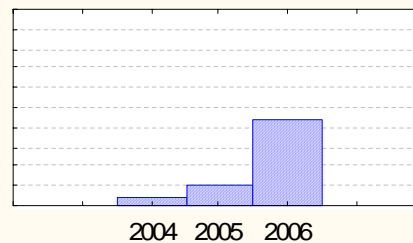
Senaste besök (aktuellella patienter)



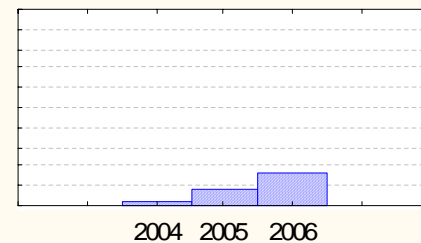
Enhet: Borås



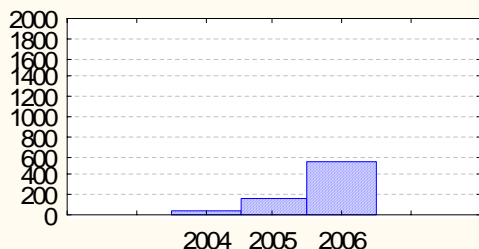
Enhet: Alingsås



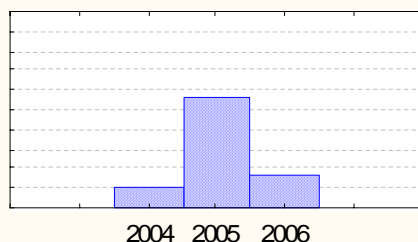
Enhet: Falun



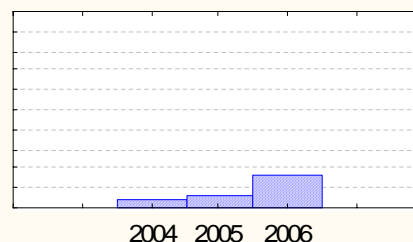
Enhet: Kungälv



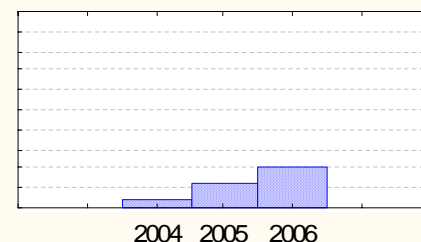
Enhet: Eksjö



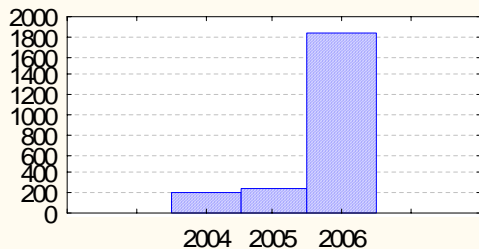
Enhet: Skövde



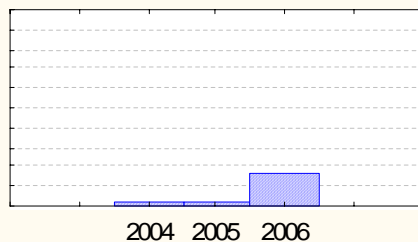
Enhet: Trelleborg



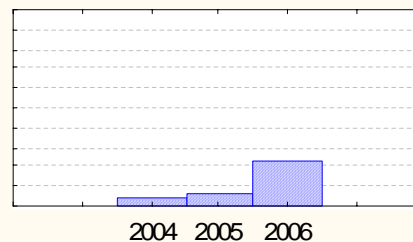
Enhet: Uddevåla



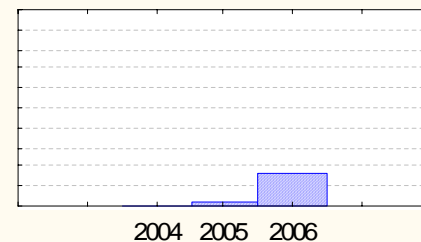
Enhet: Sahlgrenska



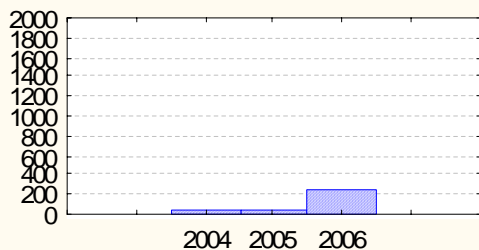
Enhet: Skene



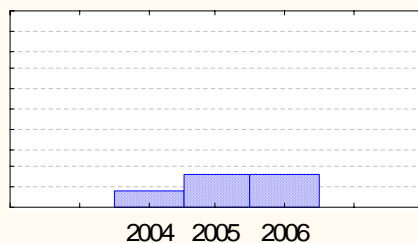
Enhet: Gävle



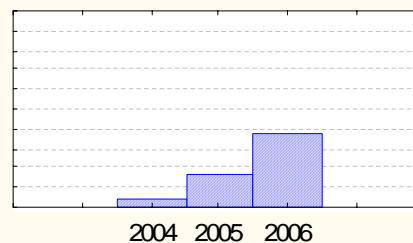
Enhet: Särdiviken



Enhet: Enköping

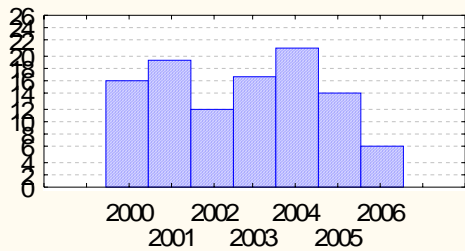


Enhet: Skien

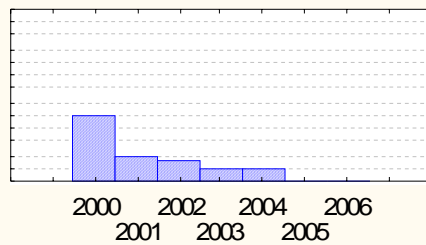


Enhet: Strängert

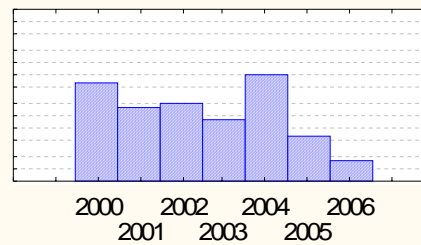
Antal debuterade typ 1 patienter



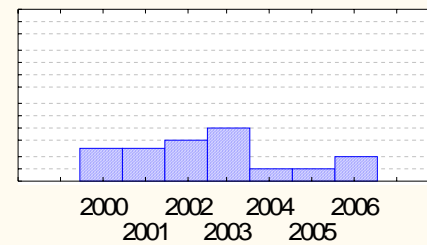
Enhet: Borås



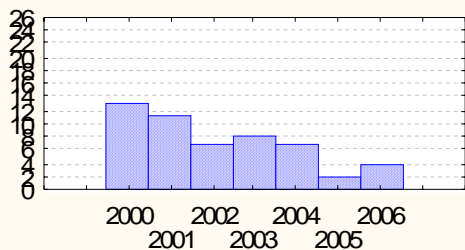
Enhet: Alingsås



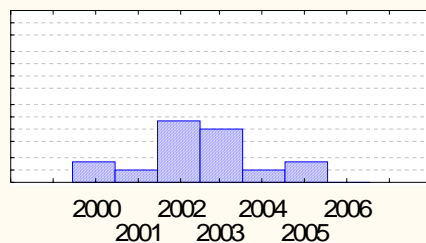
Enhet: Falun



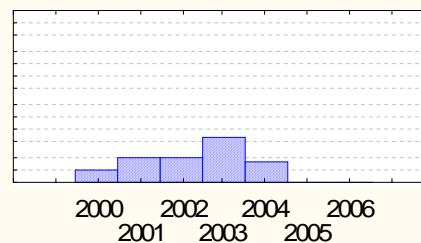
Enhet: Kungälv



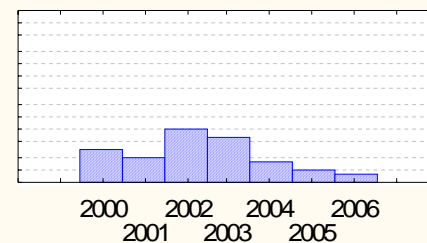
Enhet: Ekshö



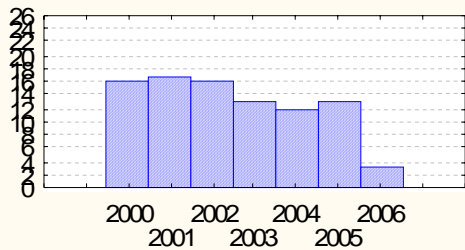
Enhet: Skövde



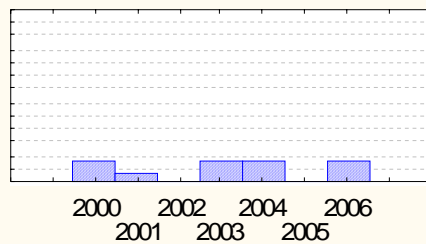
Enhet: Trelleborg



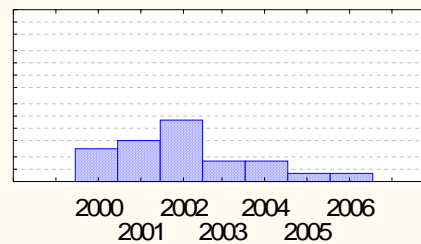
Enhet: Uddevåla



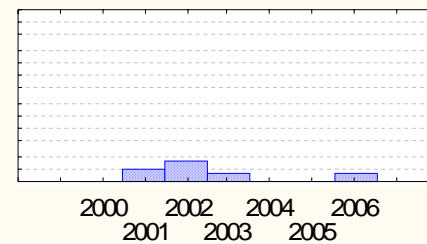
Enhet: Sahlgrenska



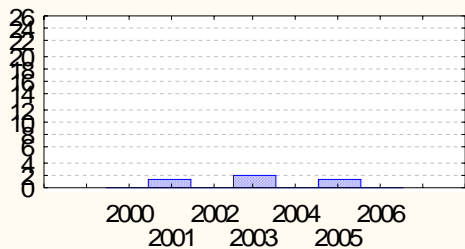
Enhet: Skene



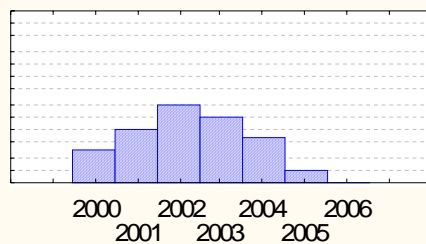
Enhet: Gävle



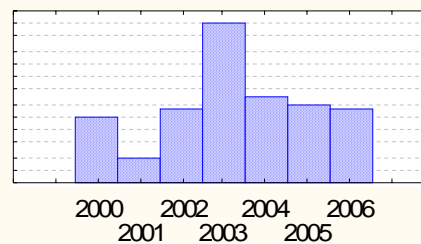
Enhet: Särsviken



Enhet: Enköping

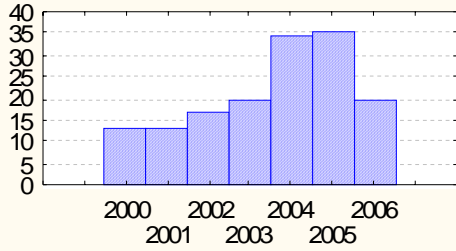


Enhet: Skänninge

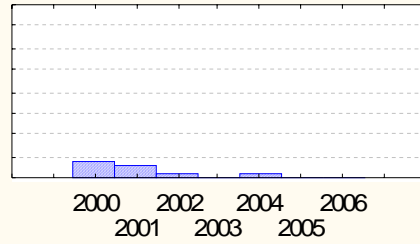


Enhet: Strängnäs

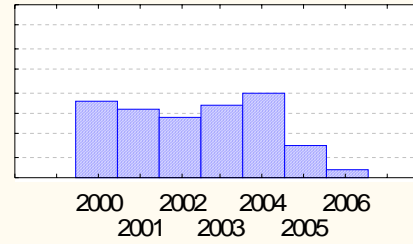
Insulinstart vid typ 2 diabetes



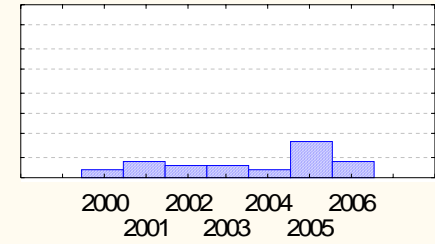
Enhet: Borås



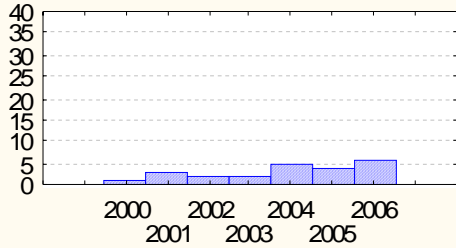
Enhet: Alingsås



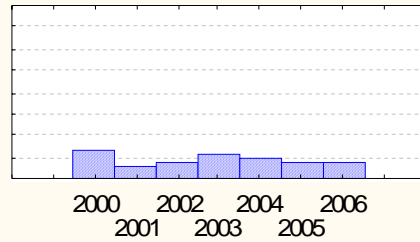
Enhet: Falun



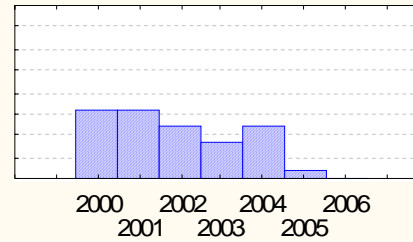
Enhet: Kungälv



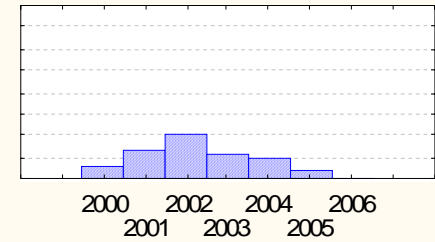
Enhet: Ekshö



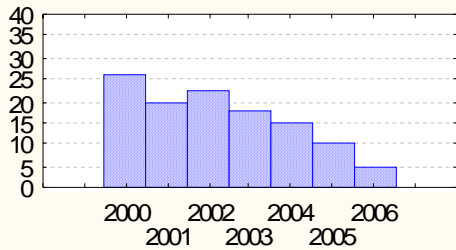
Enhet: Skövde



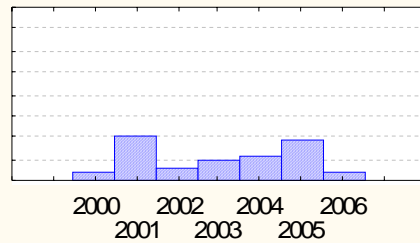
Enhet: Trelleborg



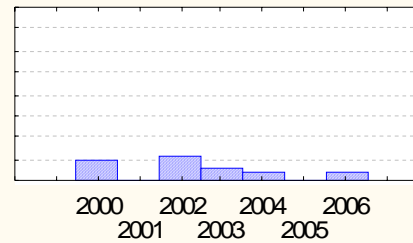
Enhet: Uddevåla



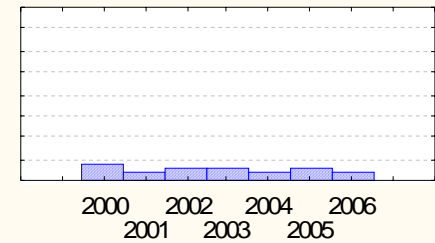
Enhet: Sahlgrenska



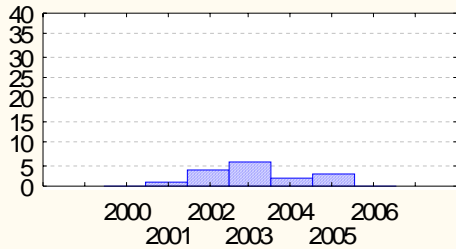
Enhet: Skene



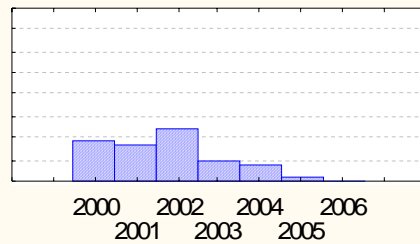
Enhet: Gävle



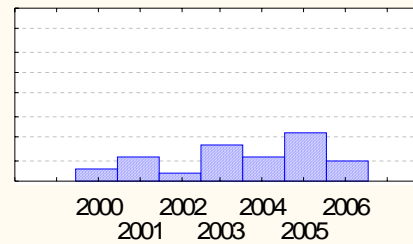
Enhet: Särövik



Enhet: Enköping

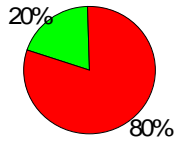


Enhet: Skien

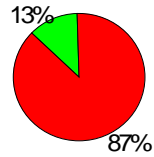


Enhet: Stavanger

Andel > 70 år



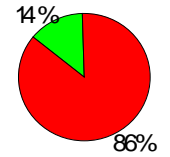
Enhet: Borås



Enhet: Alingsås



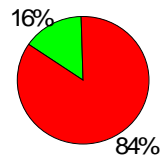
Enhet: Falun



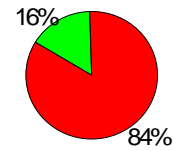
Enhet: Kungälv



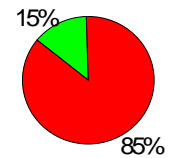
Enhet: Eksjö



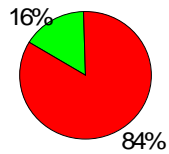
Enhet: Skövde



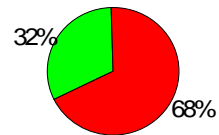
Enhet: Trelleborg



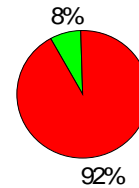
Enhet: Uddevåla



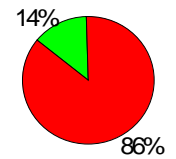
Enhet: Sahlgrenska



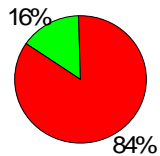
Enhet: Skene



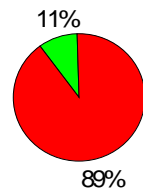
Enhet: Gävle



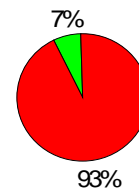
Enhet: Sandviken



Enhet: Enköping

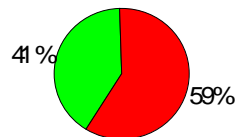


Enhet: Skien

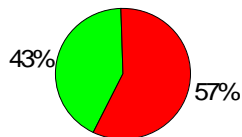


Enhet: Stavanger

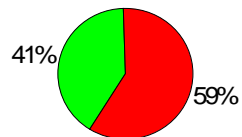
Andel kvinnor



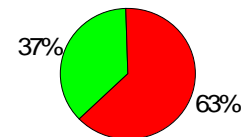
Enhet: Borås



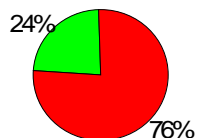
Enhet: Alingsås



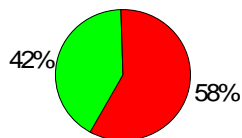
Enhet: Falun



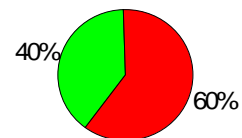
Enhet: Kungälv



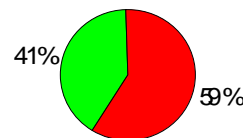
Enhet: Eksjö



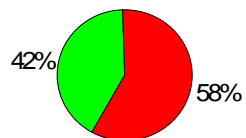
Enhet: Skövde



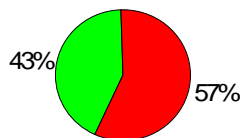
Enhet: Trelleborg



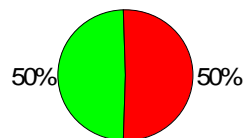
Enhet: Uddevalla



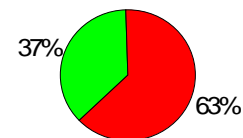
Enhet: Sahlgrenska



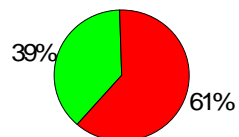
Enhet: Skene



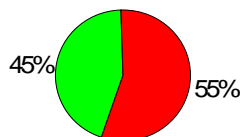
Enhet: Gävle



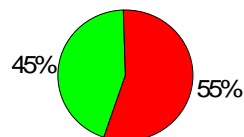
Enhet: Sandviken



Enhet: Enköping



Enhet: Skien

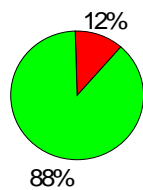


Enhet: Stavanger

Andel insulinbehandlade



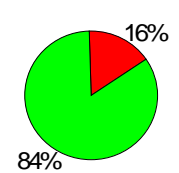
Enhet: Borås



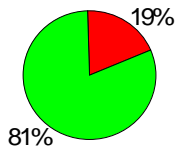
Enhet: Alingsås



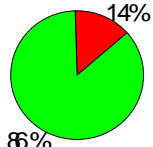
Enhet: Falun



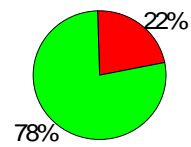
Enhet: Kungälv



Enhet: Eksjö



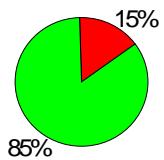
Enhet: Skövde



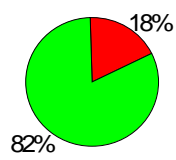
Enhet: Trelleborg



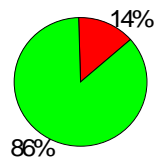
Enhet: Uddevalla



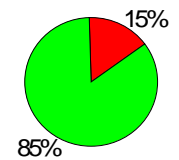
Enhet: Sahlgrenska



Enhet: Skene



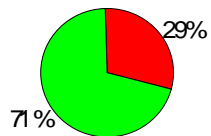
Enhet: Gävle



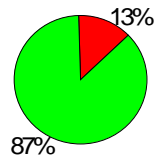
Enhet: Sandviken



Enhet: Enköping



Enhet: Skänninge

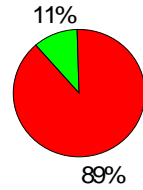


Enhet: Starbäck

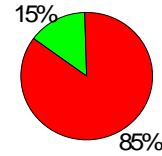
Oral diabetesterapi + insulin



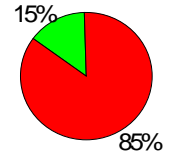
Enhet: Borås



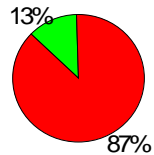
Enhet: Alingsås



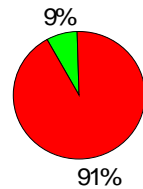
Enhet: Falun



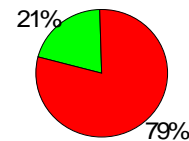
Enhet: Kungälv



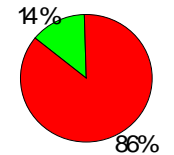
Enhet: Eksjö



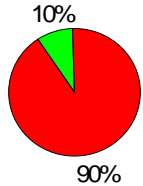
Enhet: Skövde



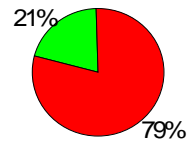
Enhet: Trelleborg



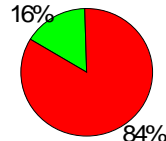
Enhet: Uddevåla



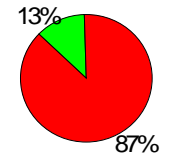
Enhet: Sahlgrenska



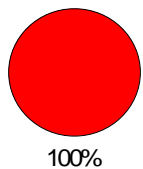
Enhet: Skene



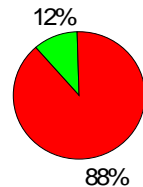
Enhet: Gävle



Enhet: Sandviken



Enhet: Enköping

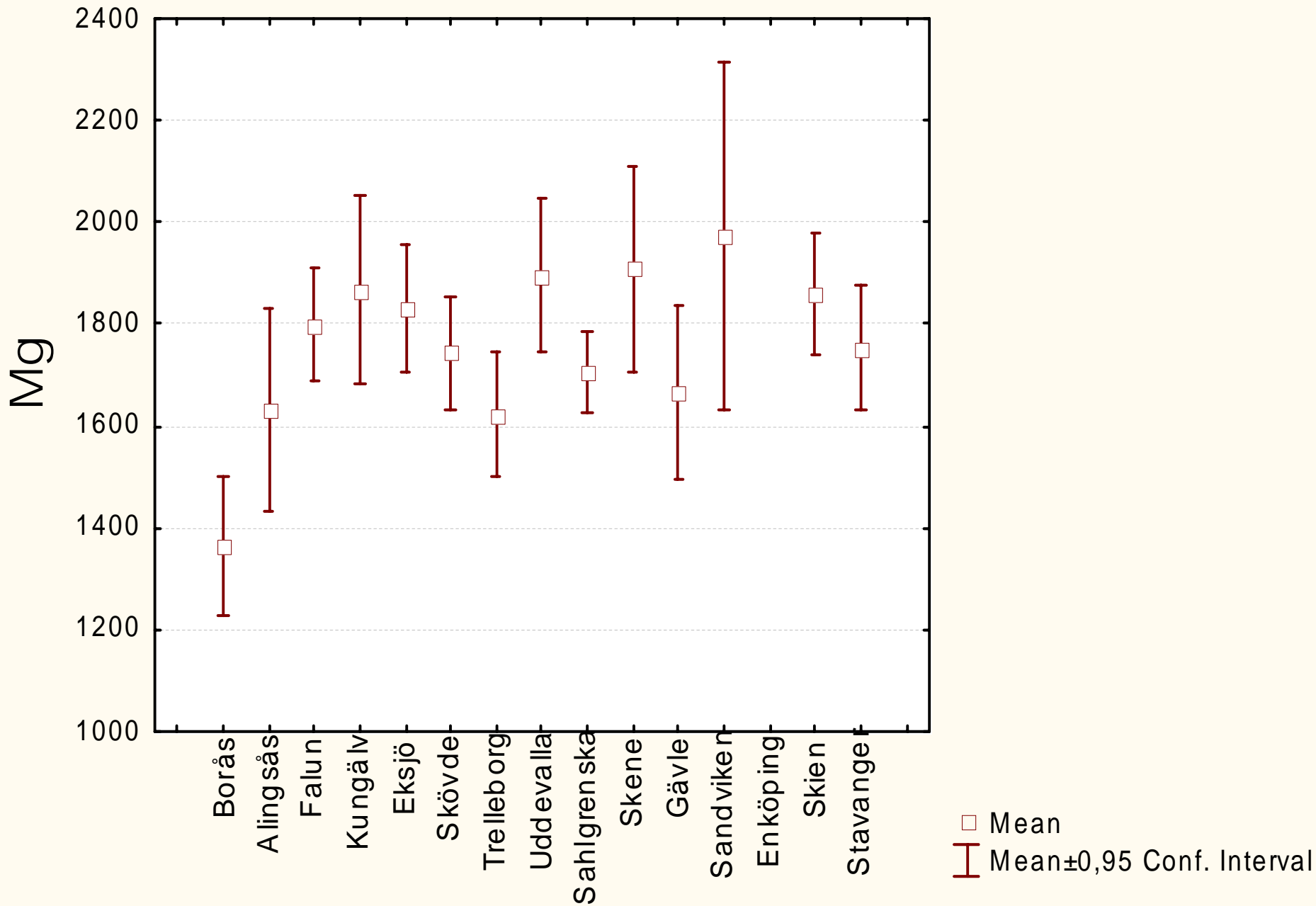


Enhet: Skien

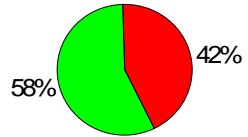


Enhet: Stavanger

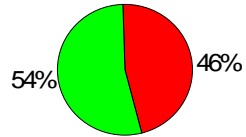
Metformindos



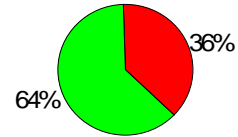
Typ 1 diabetes



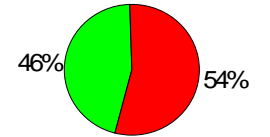
Enhet: Borås



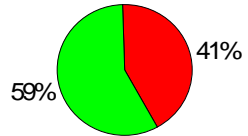
Enhet: Alingsås



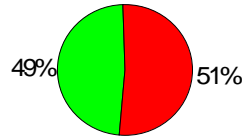
Enhet: Falun



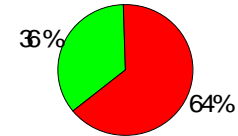
Enhet: Kungälv



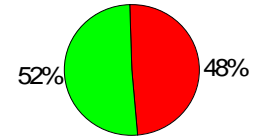
Enhet: Eksjö



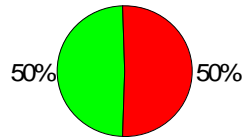
Enhet: Skövde



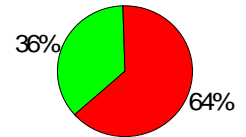
Enhet: Trelleborg



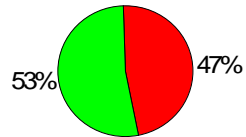
Enhet: Uddevalla



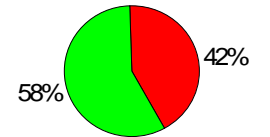
Enhet: Sahlgrenska



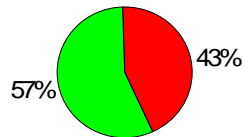
Enhet: Skene



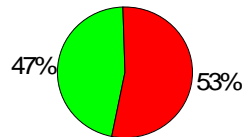
Enhet: Gävle



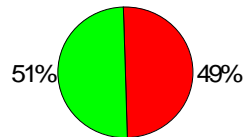
Enhet: Sandviken



Enhet: Enköping

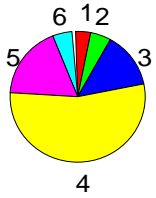


Enhet: Skien



Enhet: Stavanger

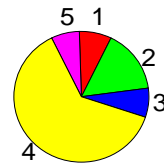
Antal insulindoser/dag



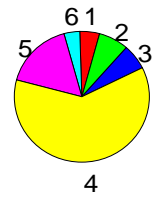
Enhet: Borås



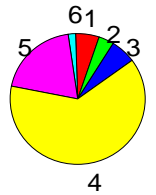
Enhet: Alingsås



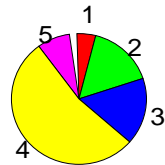
Enhet: Falun



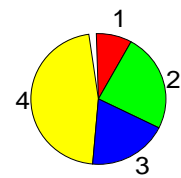
Enhet: Kungälv



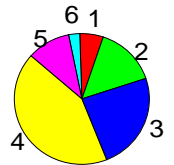
Enhet: Eksjö



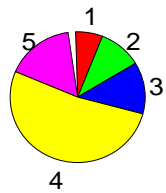
Enhet: Skövde



Enhet: Trelleborg



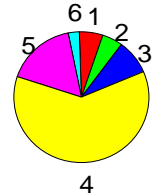
Enhet: Uddevalla



Enhet: Sahlgrenska



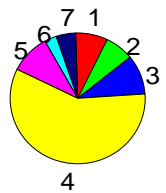
Enhet: Skene



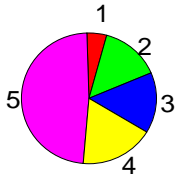
Enhet: Gävle



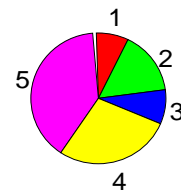
Enhet: Sandviken



Enhet: Enköping

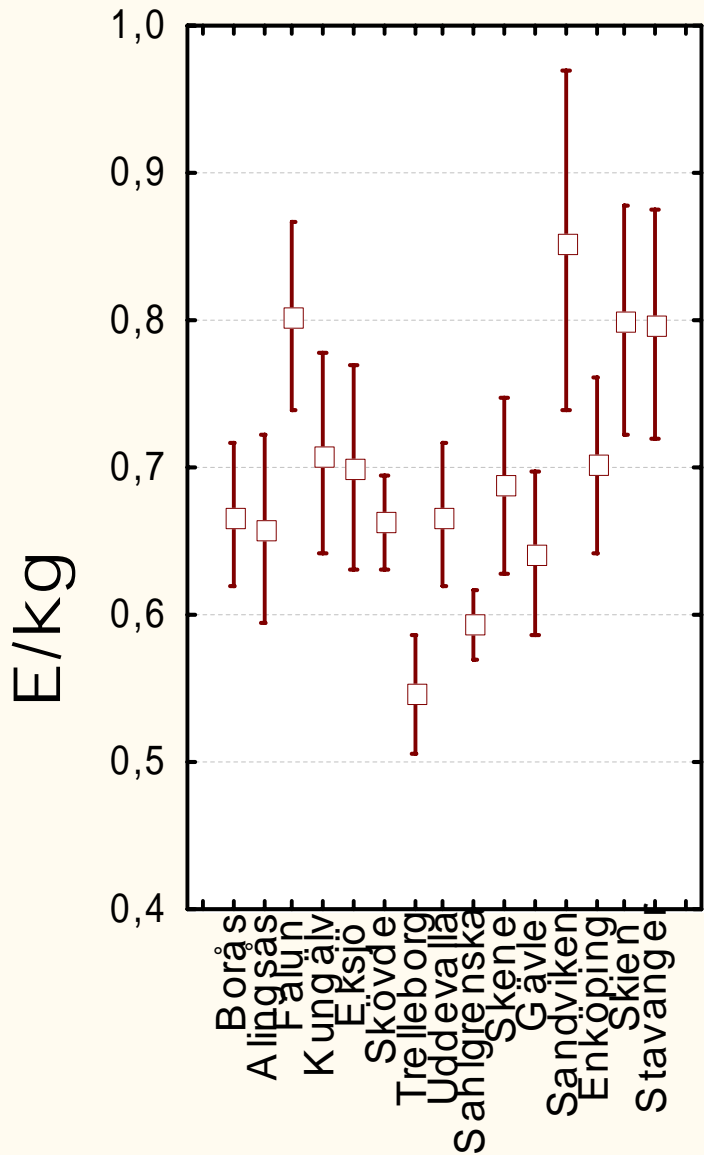


Enhet: Skien

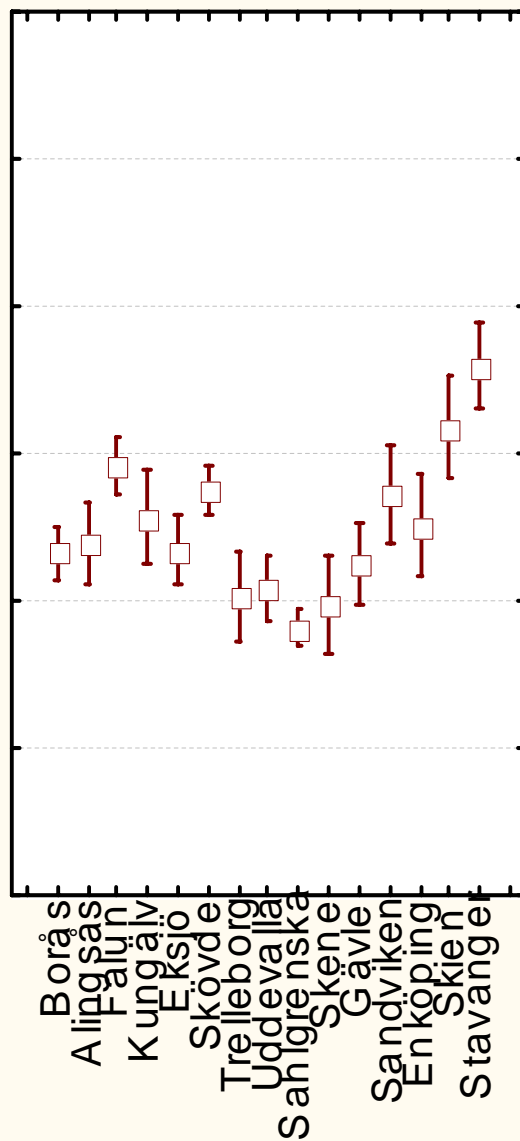


Enhet: Stavanger

Insulindos



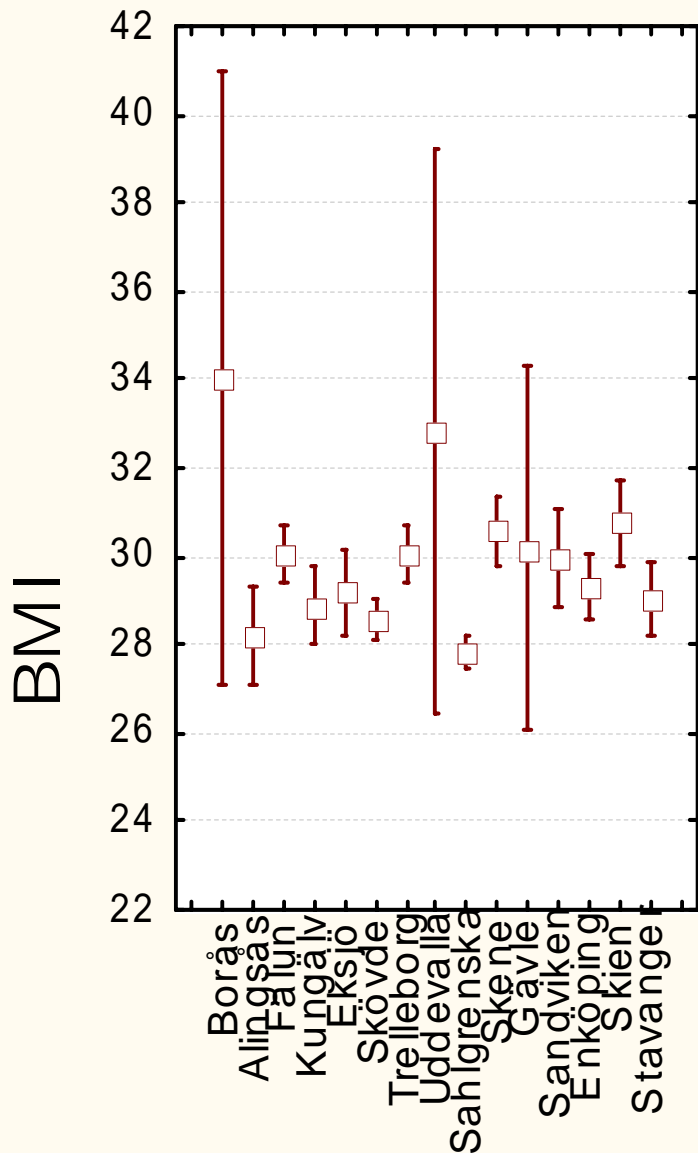
Typ 2



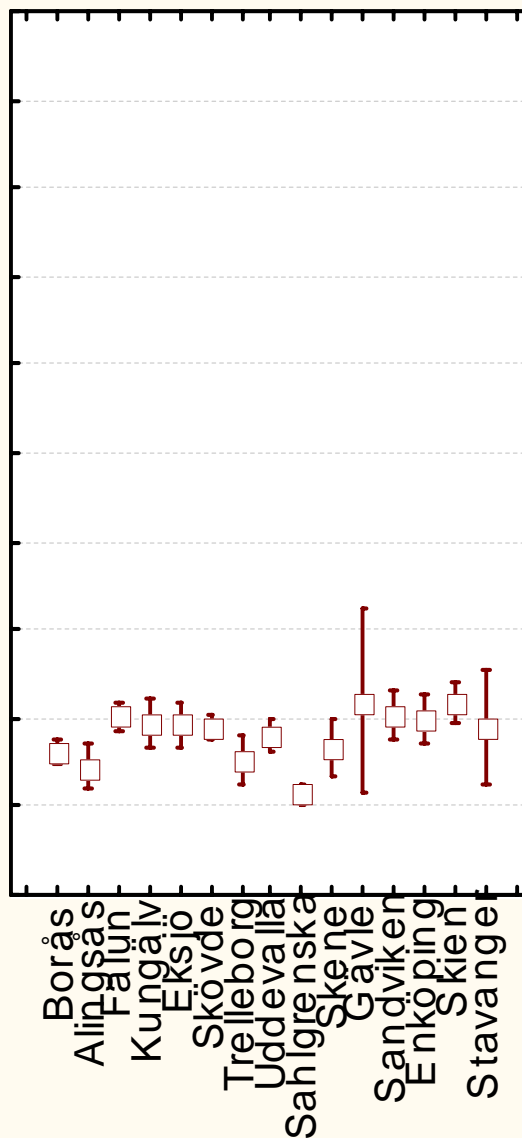
Typ 1

□ Mean
I Mean±0,95 Conf. Interval

BMI hos de insulinbehandlade



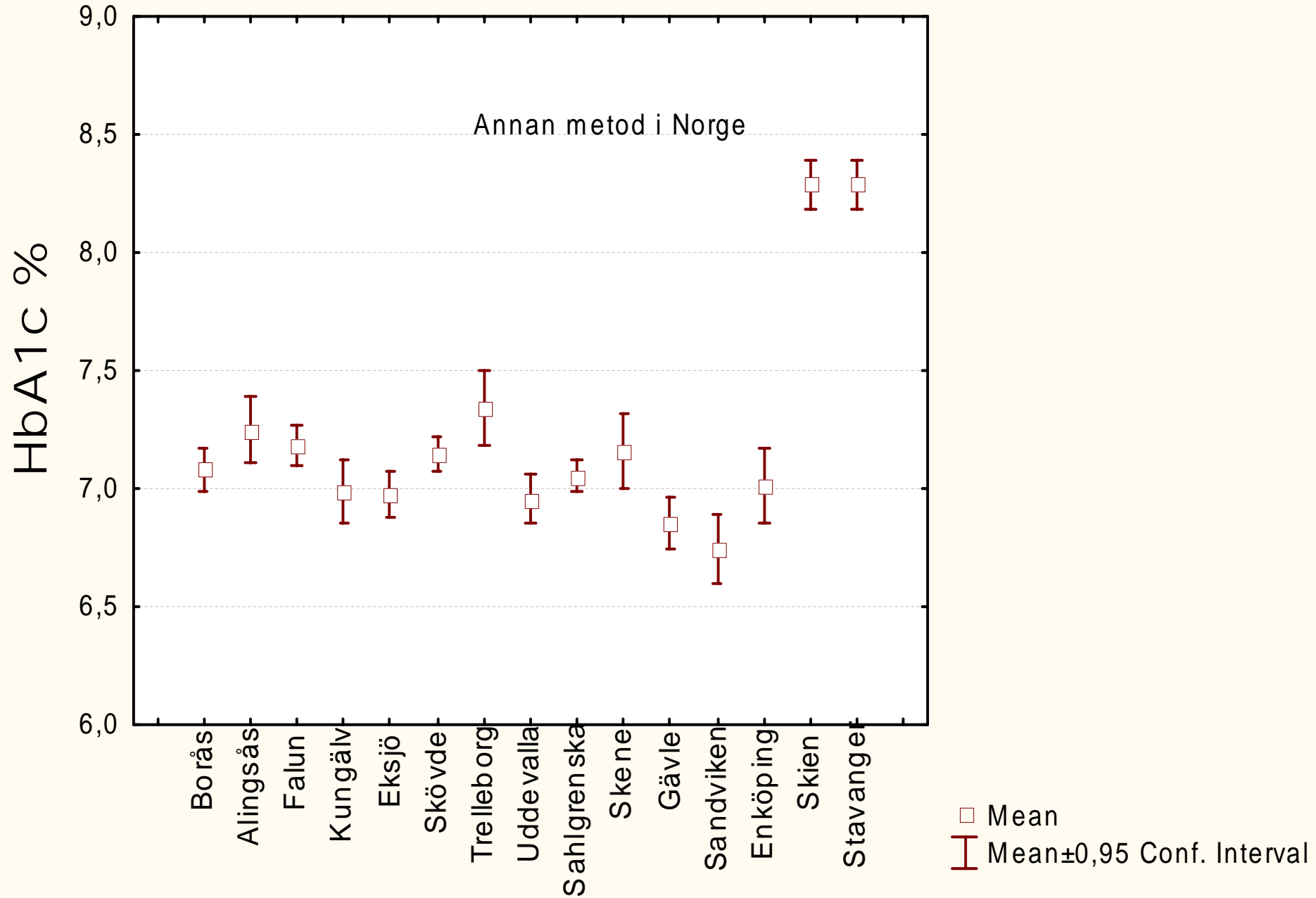
Typ 2



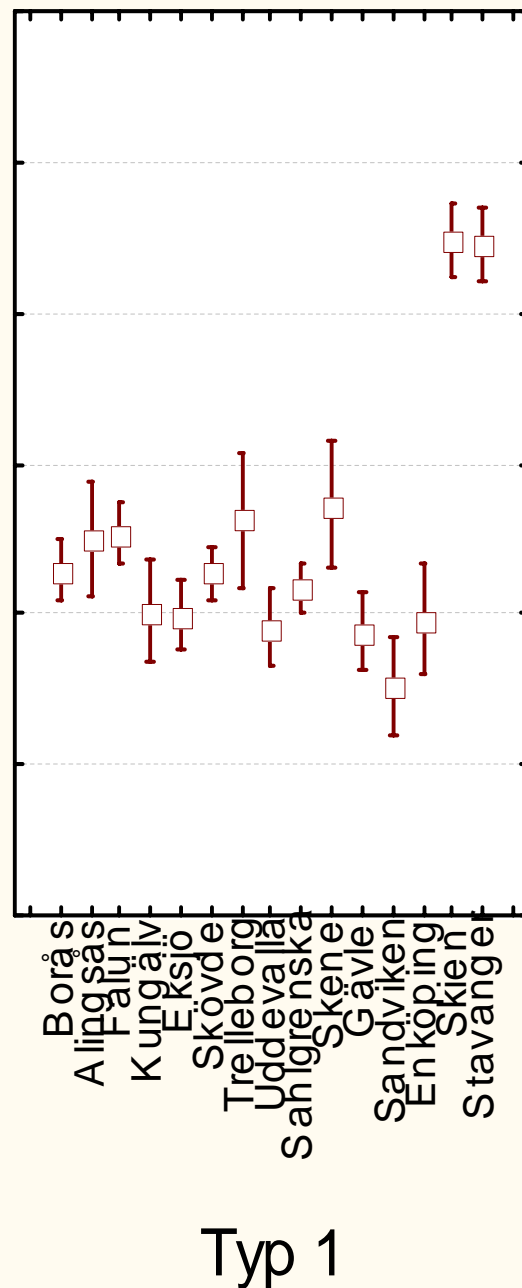
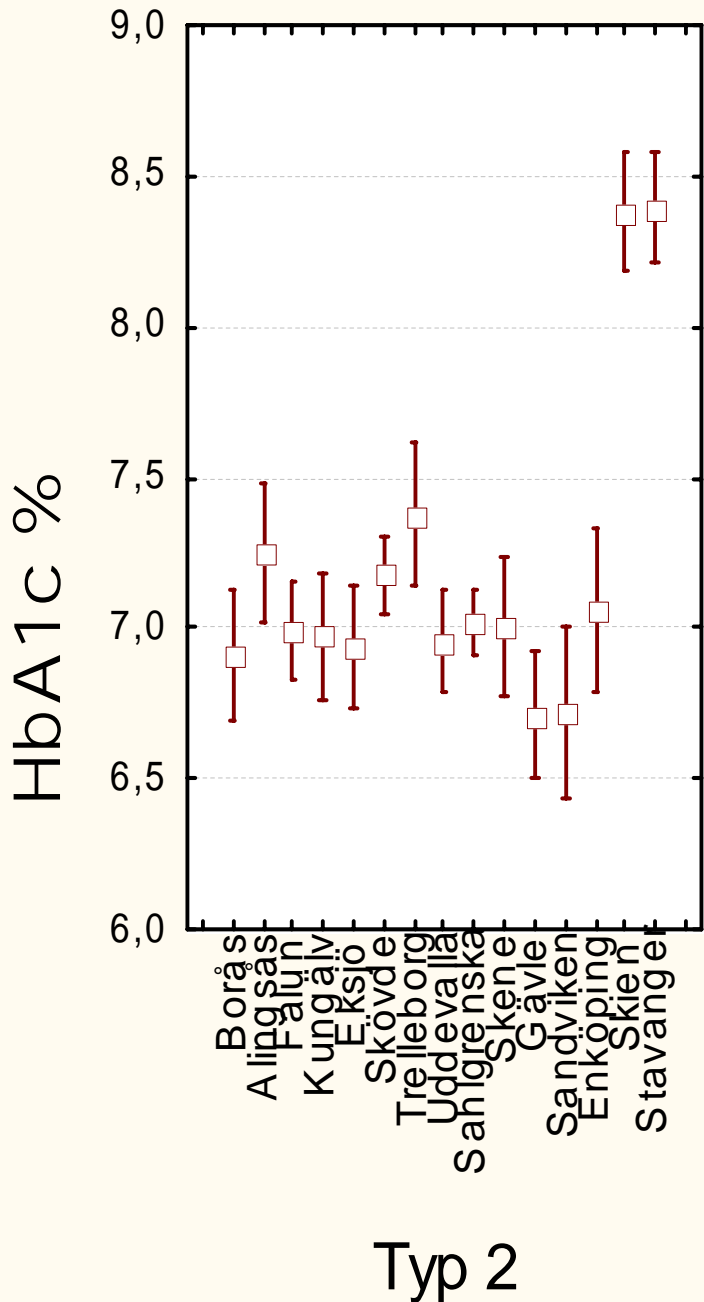
Typ 1

□ Mean
| Mean ± 0,95 Conf. Interval

Insulinbehandlade

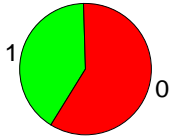


Insulinbehandlade

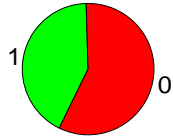


□ Mean
I Mean ± 0,95 Conf. Interval

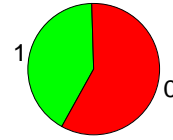
Hypoglykemi-dokumentation vid typ 1



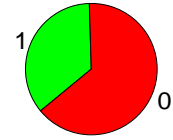
Enhet: Borås



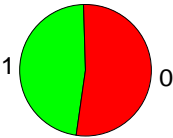
Enhet: Alingsås



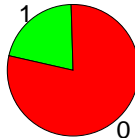
Enhet: Falun



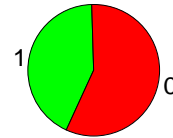
Enhet: Kungälv



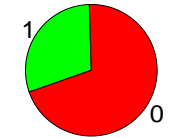
Enhet: Eksjö



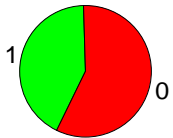
Enhet: Skövde



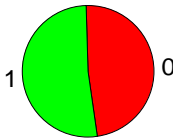
Enhet: Trelleborg



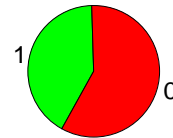
Enhet: Uddevåla



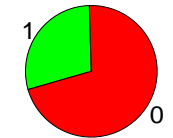
Enhet: Sahlgrenska



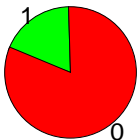
Enhet: Skene



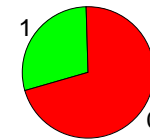
Enhet: Gävle



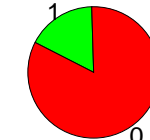
Enhet: Sandviken



Enhet: Enköping

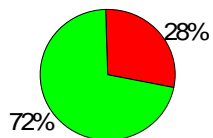


Enhet: Skien

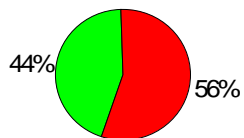


Enhet: Stavanger

Uppgift om få hypoglykemier vid insulinbehandling



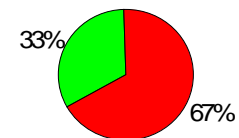
Enhet: Borås



Enhet: Alingsås



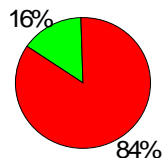
Enhet: Falun



Enhet: Kungälv



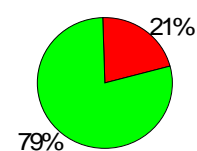
Enhet: Eksjö



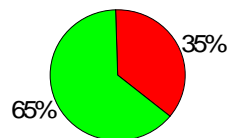
Enhet: Skövde



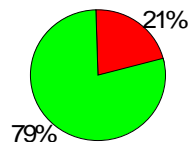
Enhet: Trelleborg



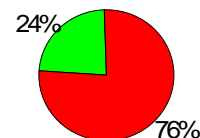
Enhet: Uddevalla



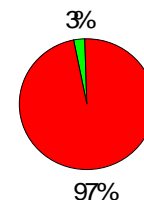
Enhet: Sahlgrenska



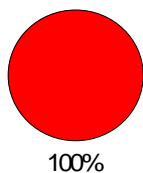
Enhet: Skene



Enhet: Gävle



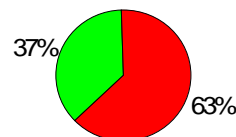
Enhet: Sandviken



Enhet: Enköping



Enhet: Skien

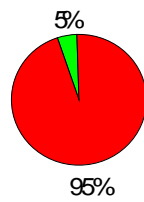


Enhet: Stavanger

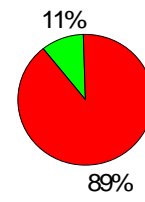
Uppgift om bruk av regular insulin



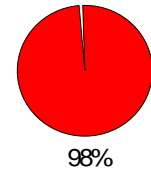
Enhet: Borås



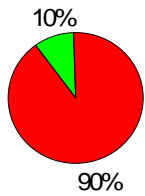
Enhet: Alingsås



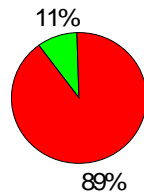
Enhet: Falun



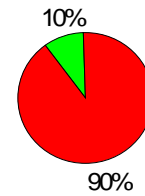
Enhet: Kungälv



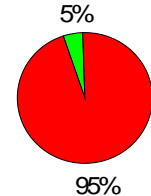
Enhet: Eksjö



Enhet: Skövde



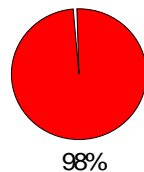
Enhet: Trelleborg



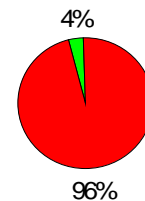
Enhet: Uddevåla



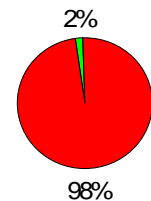
Enhet: Sahlgrenska



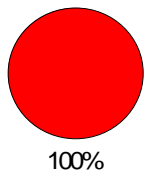
Enhet: Skene



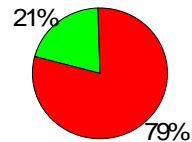
Enhet: Gävle



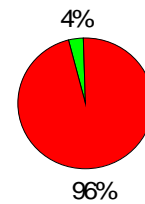
Enhet: Sandviken



Enhet: Enköping

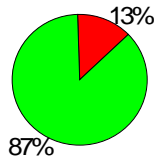


Enhet: Skien

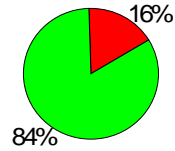


Enhet: Stavanger

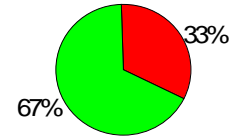
Uppgift om bruk av lispro eller aspart



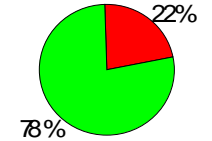
Enhet: Borås



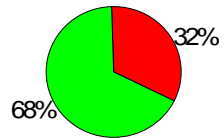
Enhet: Alingsås



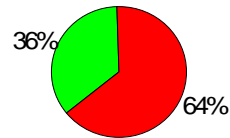
Enhet: Falun



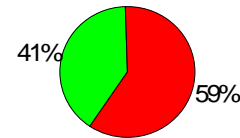
Enhet: Kungälv



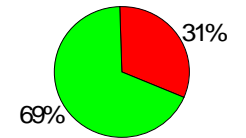
Enhet: Eksjö



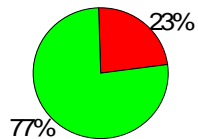
Enhet: Skövde



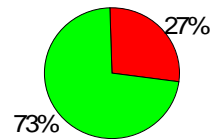
Enhet: Trelleborg



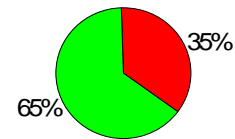
Enhet: Uddevåla



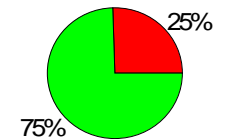
Enhet: Sahlgrenska



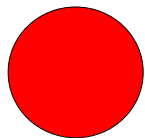
Enhet: Skene



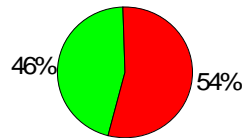
Enhet: Gävle



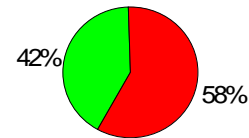
Enhet: Sandviken



Enhet: Enköping



Enhet: Skien



Enhet: Stavanger

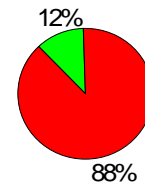
Insulinpump bland insulinbehandlade



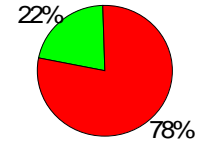
Enhet: Borås



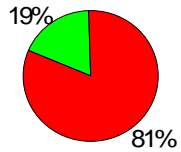
Enhet: Alingsås



Enhet: Falun



Enhet: Kungälv



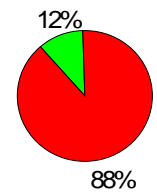
Enhet: Eksjö



Enhet: Skövde



Enhet: Trelleborg



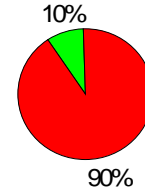
Enhet: Uddevalla



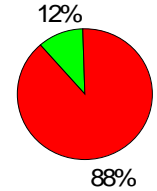
Enhet: Sahlgrenska



Enhet: Skene



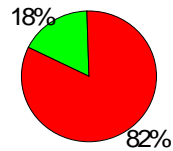
Enhet: Gävle



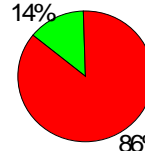
Enhet: Sandviken



Enhet: Enköping



Enhet: Skien

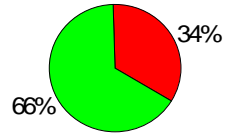


Enhet: Stavanger

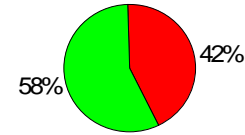
Glargin eller detemir vid insulinbehandling



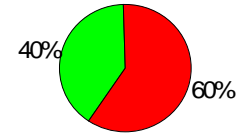
Enhet: Borås



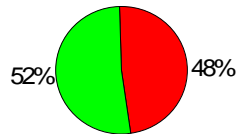
Enhet: Alingsås



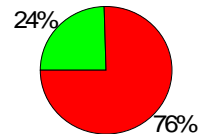
Enhet: Falun



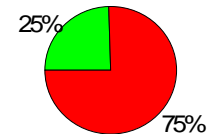
Enhet: Kungälv



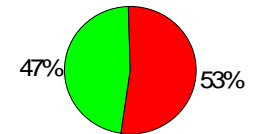
Enhet: Eksjö



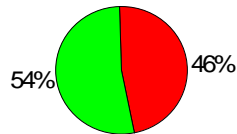
Enhet: Skövde



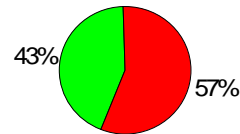
Enhet: Trelleborg



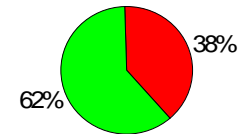
Enhet: Uddevåla



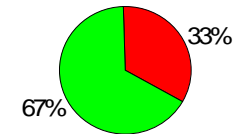
Enhet: Sahlgrenska



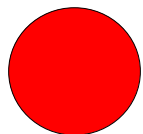
Enhet: Skene



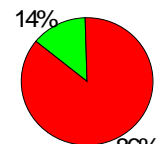
Enhet: Gävle



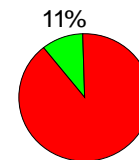
Enhet: Sandviken



Enhet: Enköping

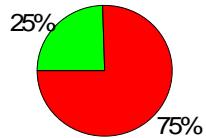


Enhet: Skien

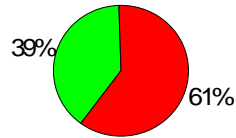


Enhet: Stavanger

Rapporterat hyperlipidemibehandling



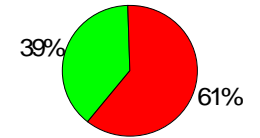
Enhet: Borås



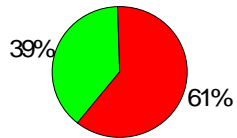
Enhet: Alingsås



Enhet: Falun



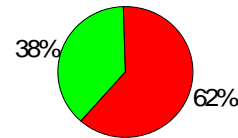
Enhet: Kungälv



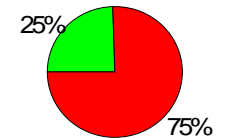
Enhet: Eksjö



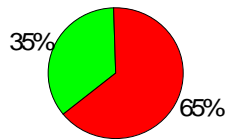
Enhet: Skövde



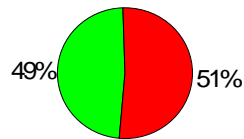
Enhet: Trelleborg



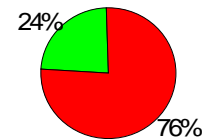
Enhet: Uddevalla



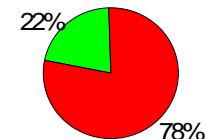
Enhet: Sahlgrenska



Enhet: Skene



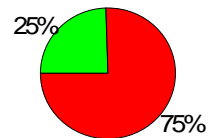
Enhet: Gävle



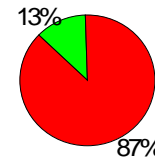
Enhet: Sandviken



Enhet: Enköping



Enhet: Skien

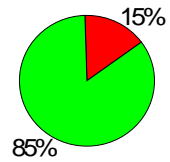


Enhet: Stavanger

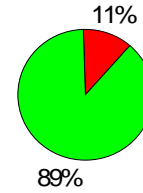
Uppgift om LDL



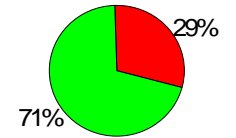
Enhet: Borås



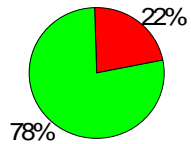
Enhet: Alingsås



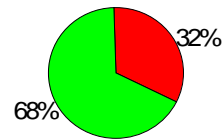
Enhet: Falun



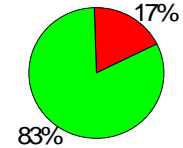
Enhet: Kungälv



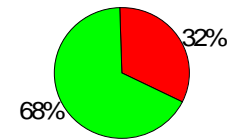
Enhet: Eksjö



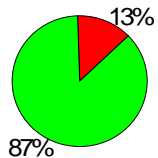
Enhet: Skövde



Enhet: Trelleborg



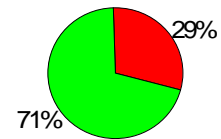
Enhet: Uddevåla



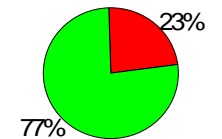
Enhet: Sahlgrenska



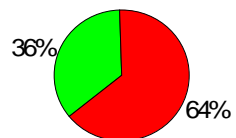
Enhet: Skene



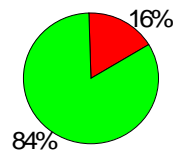
Enhet: Gävle



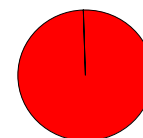
Enhet: Sandviken



Enhet: Enköping

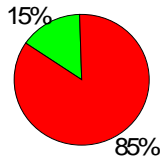


Enhet: Skien

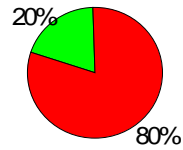


Enhet: Stavanger

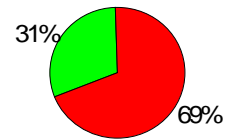
LDL <2,6 mmol/l



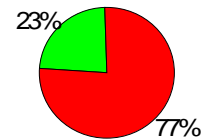
Enhet: Borås



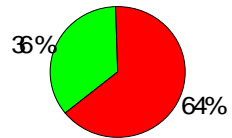
Enhet: Alingsås



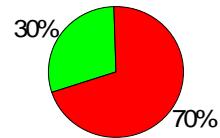
Enhet: Falun



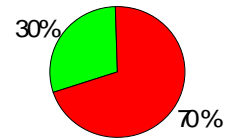
Enhet: Kungälv



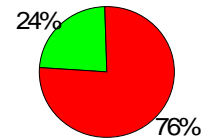
Enhet: Eksjö



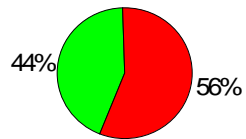
Enhet: Skövde



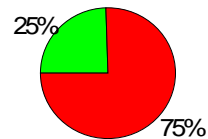
Enhet: Trelleborg



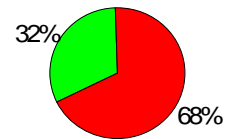
Enhet: Uddevalla



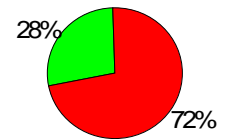
Enhet: Sahlgrenska



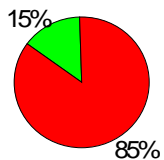
Enhet: Skene



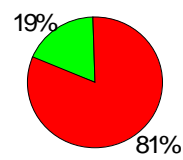
Enhet: Gävle



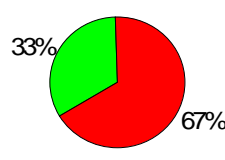
Enhet: Sandviken



Enhet: Enköping

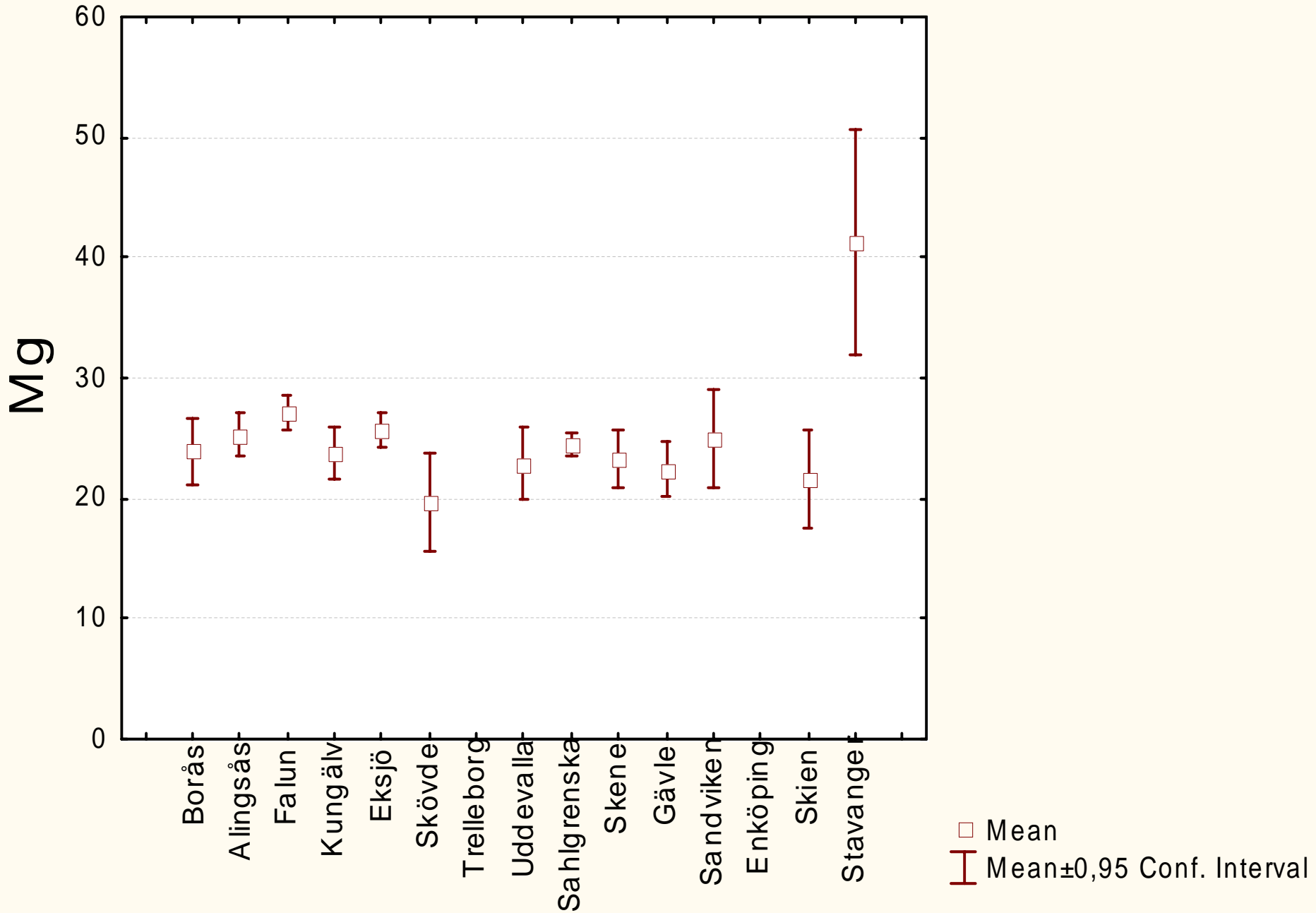


Enhet: Skien

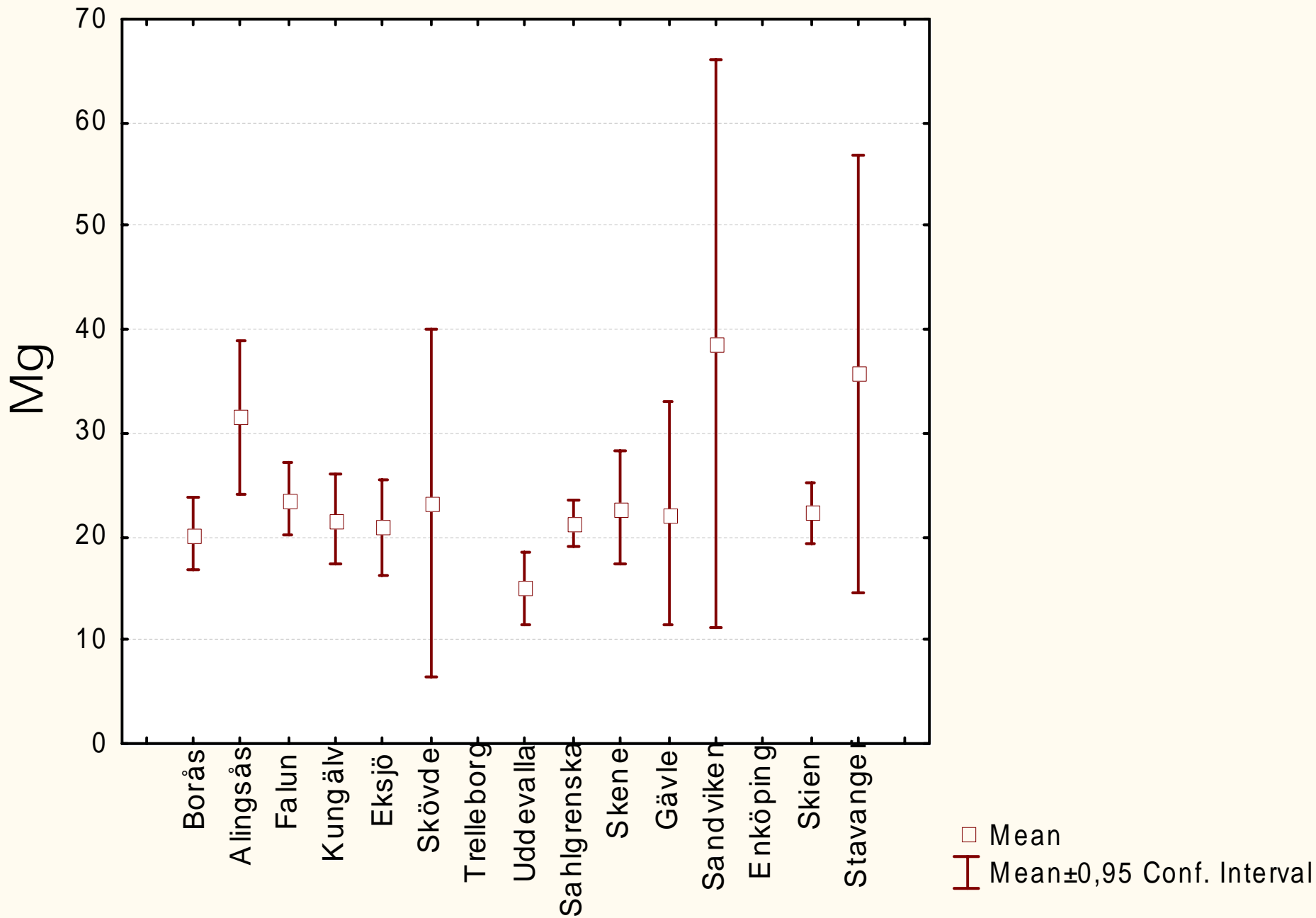


Enhet: Stavanger

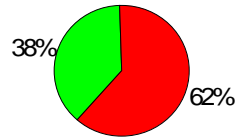
Simvastatindos



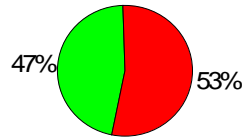
Atorvastatindos



Blodtrycksbehandling



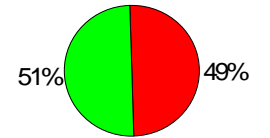
Enhet: Borås



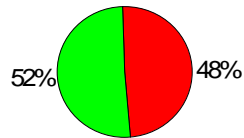
Enhet: Alingsås



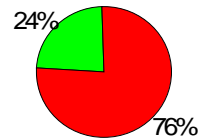
Enhet: Falun



Enhet: Kungälv



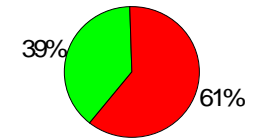
Enhet: Eksjö



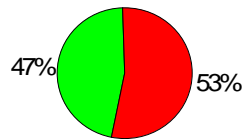
Enhet: Skövde



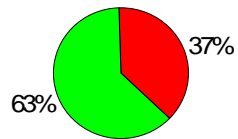
Enhet: Trelleborg



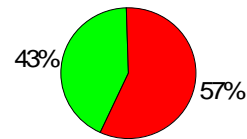
Enhet: Uddevåla



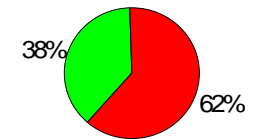
Enhet: Sahlgrenska



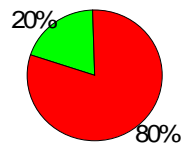
Enhet: Skene



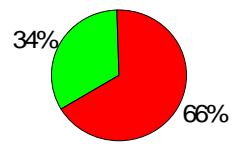
Enhet: Gävle



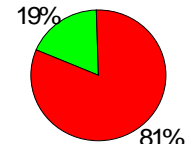
Enhet: Sandviken



Enhet: Enköping

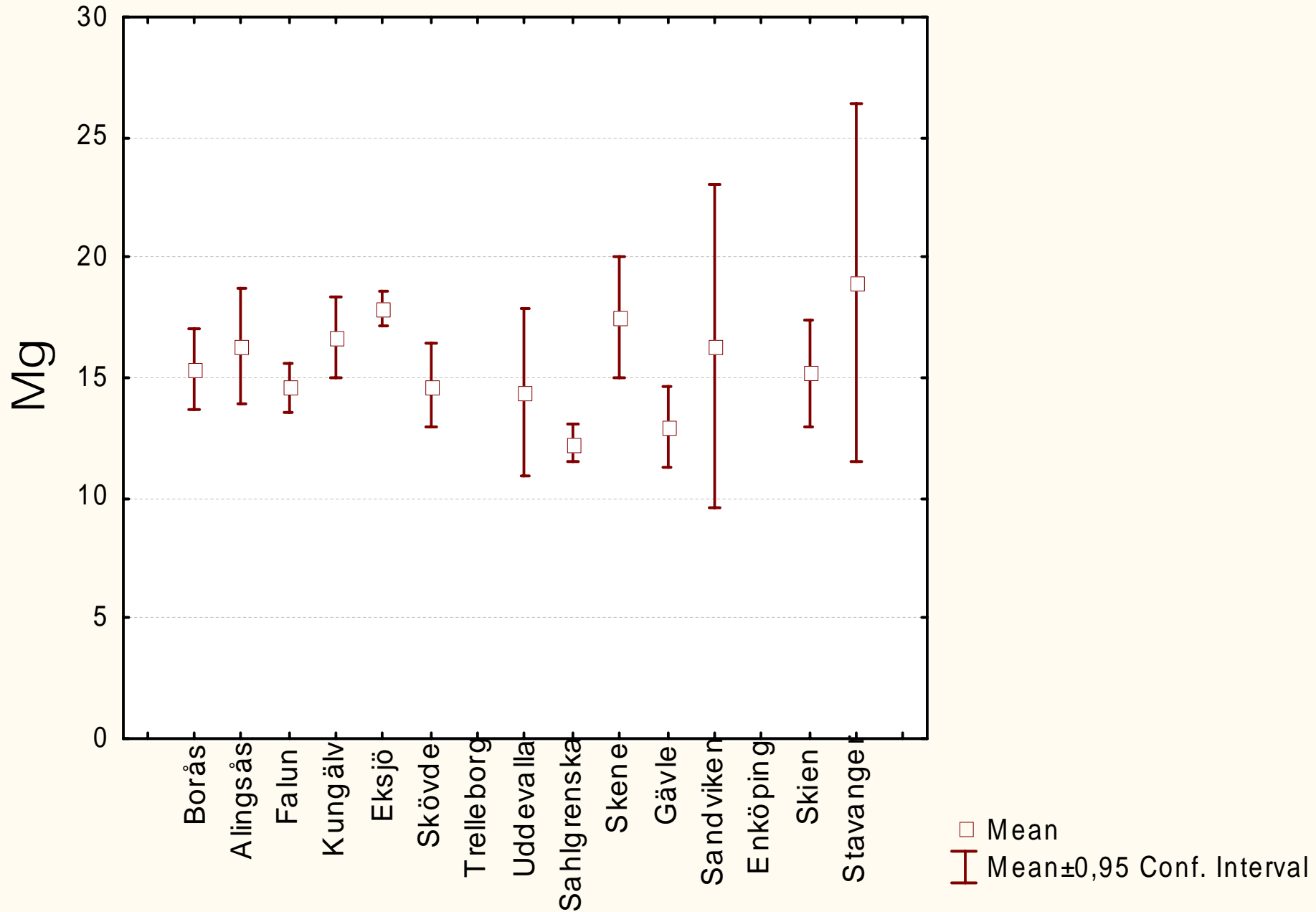


Enhet: Skien

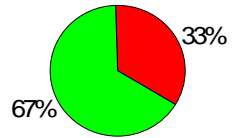


Enhet: Stavanger

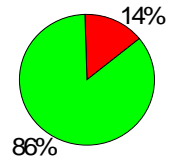
Enalaprildos



Uppgift om mikroalbumin finns



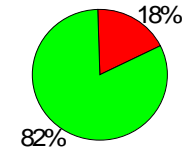
Enhet: Borås



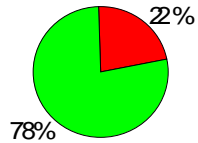
Enhet: Alingsås



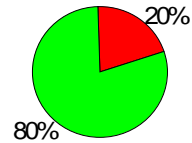
Enhet: Falun



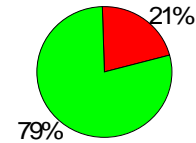
Enhet: Kungälv



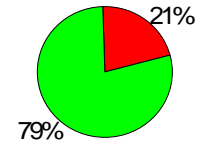
Enhet: Eksjö



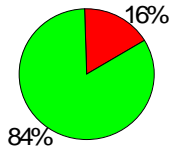
Enhet: Skövde



Enhet: Trelleborg



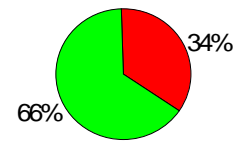
Enhet: Uddevåla



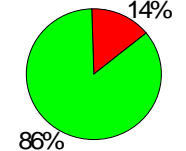
Enhet: Sahlgrenska



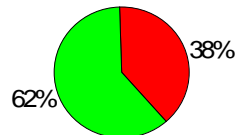
Enhet: Skene



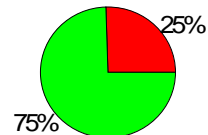
Enhet: Gävle



Enhet: Sandviken



Enhet: Enköping

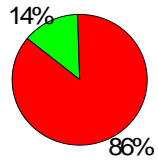


Enhet: Skien

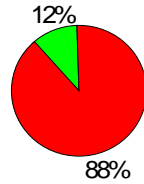


Enhet: Stavanger

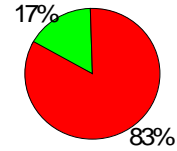
Microalbuminuri



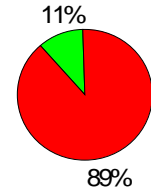
Enhet: Borås



Enhet: Alingsås



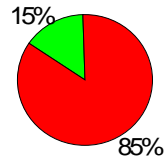
Enhet: Falun



Enhet: Kungälv



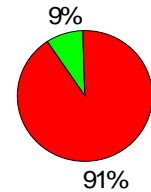
Enhet: Eksjö



Enhet: Skövde



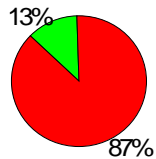
Enhet: Trelleborg



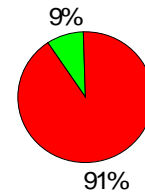
Enhet: Uddevåla



Enhet: Sahlgrenska



Enhet: Skene



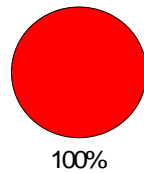
Enhet: Gävle



Enhet: Sandviken

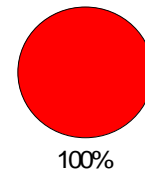


Enhet: Enköpings



Enhet: Skien

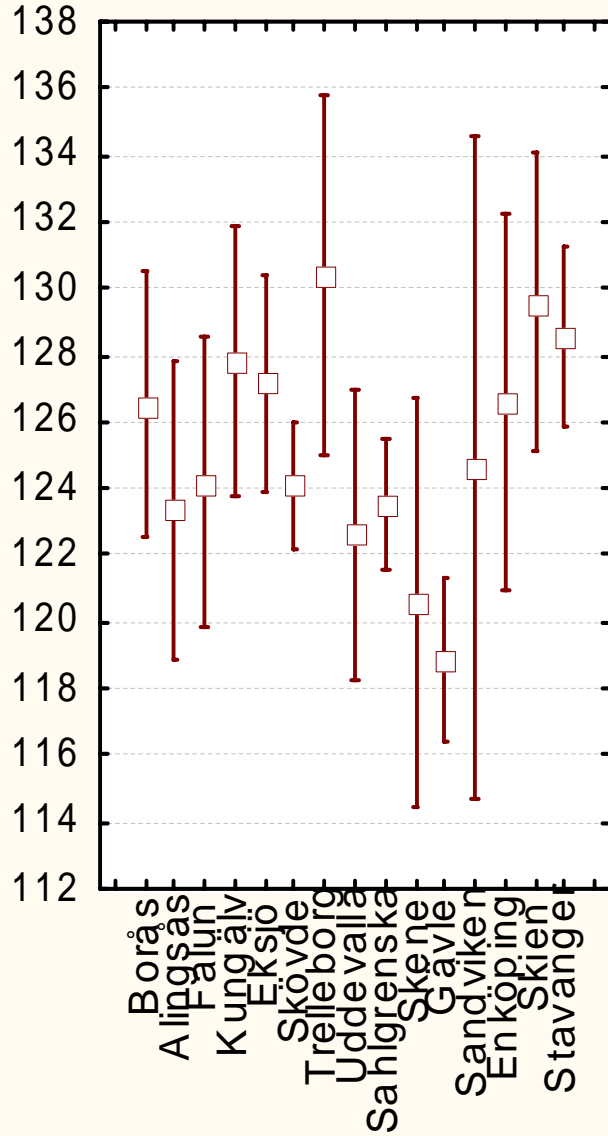
Ej klara



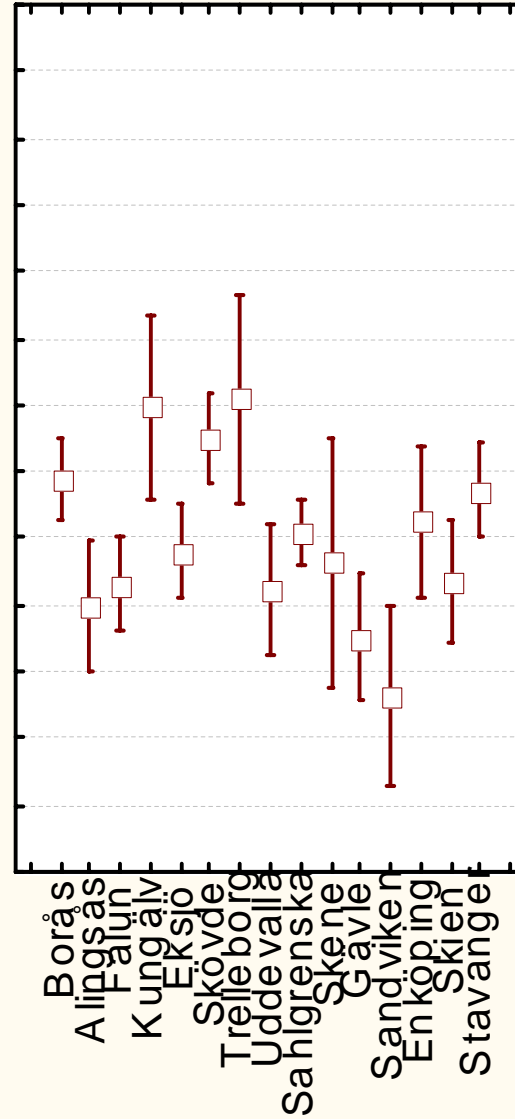
Enhet: Stavanger

Ålder < 50 år

Systoliskt blodtryck



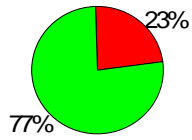
Typ 2



Typ 1

□ Mean
| Mean ± 0,95 Conf. Interval

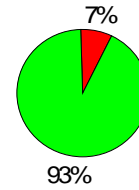
Uppgift om kreatinin finns



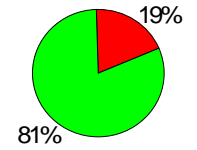
Enhet: Borås



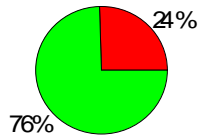
Enhet: Alingsås



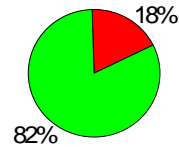
Enhet: Falun



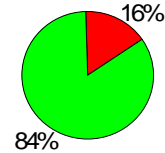
Enhet: Kungälv



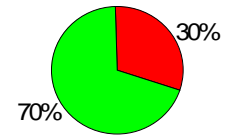
Enhet: Eksjö



Enhet: Skövde



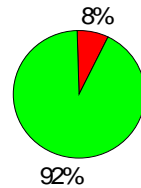
Enhet: Trelleborg



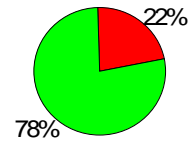
Enhet: Uddevåla



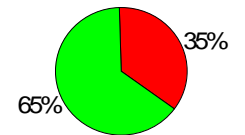
Enhet: Sahlgrenska



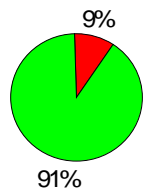
Enhet: Skene



Enhet: Gävle



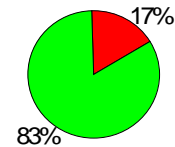
Enhet: Sandviken



Enhet: Enköping

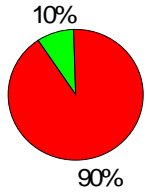


Enhet: Skien



Enhet: Stavanger

Kreatinin >120 $\mu\text{mmol/l}$



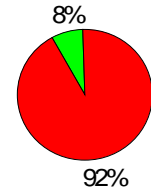
Enhet: Borås



Enhet: Alingsås



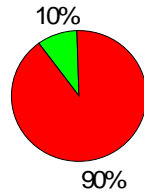
Enhet: Falun



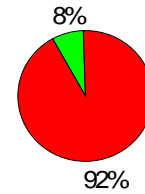
Enhet: Kungälv



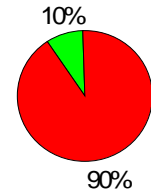
Enhet: Eksjö



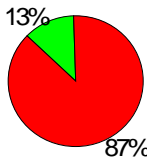
Enhet: Skövde



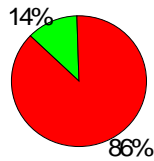
Enhet: Trelleborg



Enhet: Uddevalla



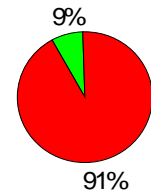
Enhet: Sahlgrenska



Enhet: Skene



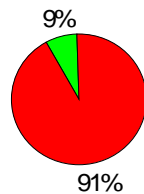
Enhet: Gävle



Enhet: Sandviken



Enhet: Enköping

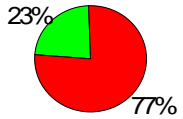


Enhet: Skien

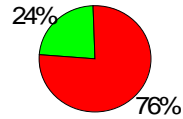


Enhet: Stavanger

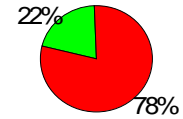
Kreatinin >120 $\mu\text{mmol/l}$ hos de som är >70 år



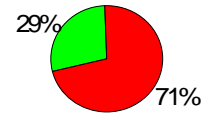
Enhet: Borås



Enhet: Alingsås



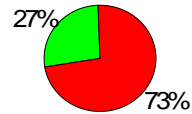
Enhet: Falun



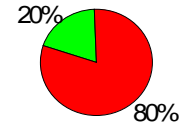
Enhet: Kungälv



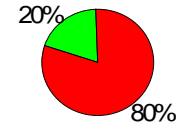
Enhet: Eksjö



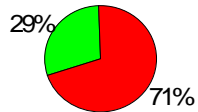
Enhet: Skövde



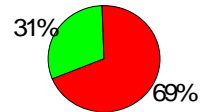
Enhet: Trelleborg



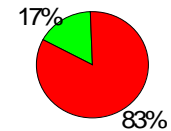
Enhet: Uddevåla



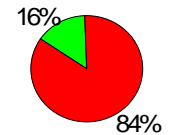
Enhet: Sahlgrenska



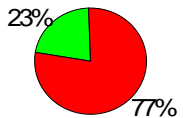
Enhet: Skene



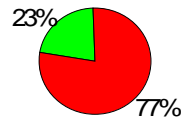
Enhet: Gävle



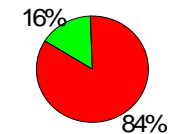
Enhet: Sandviken



Enhet: Enköping

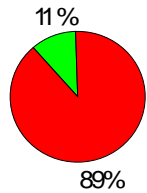


Enhet: Skien

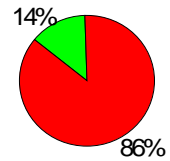


Enhet: Stavanger

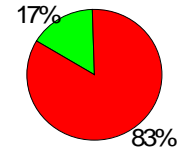
Rapporterat laserbehandling



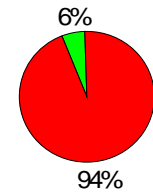
Enhet: Borås



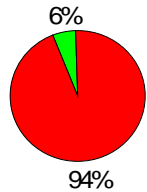
Enhet: Alingsås



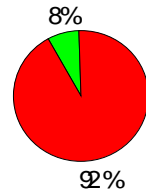
Enhet: Falun



Enhet: Kungälv



Enhet: Eksjö



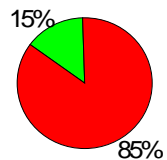
Enhet: Skövde



Enhet: Trelleborg



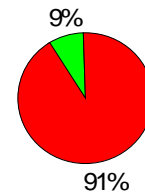
Enhet: Uddevalla



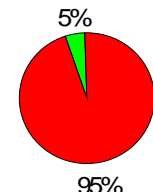
Enhet: Sahlgrenska



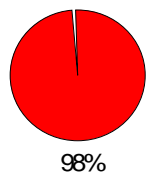
Enhet: Skene



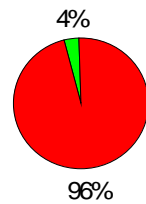
Enhet: Gävle



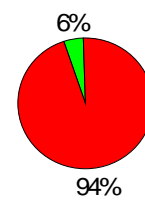
Enhet: Sandviken



Enhet: Enköping

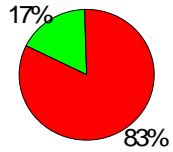


Enhet: Skien

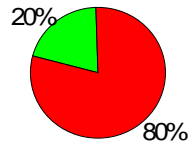


Enhet: Stavanger

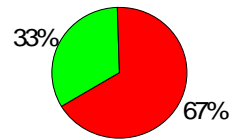
Neuropati rapporterad



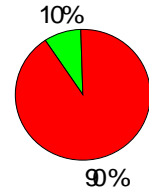
Enhet: Borås



Enhet: Alingsås



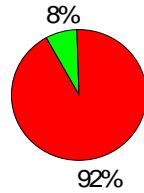
Enhet: Falun



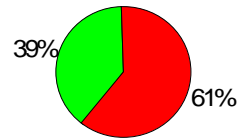
Enhet: Kungälv



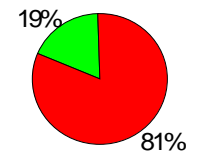
Enhet: Eksjö



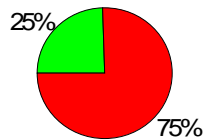
Enhet: Skövde



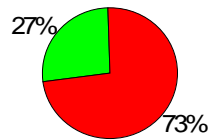
Enhet: Trelleborg



Enhet: Uddevalla



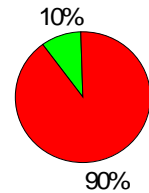
Enhet: Sahlgrenska



Enhet: Skene



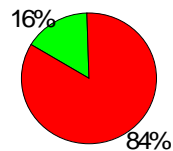
Enhet: Gävle



Enhet: Sandviken



Enhet: Enköping



Enhet: Skien



Enhet: Stavanger

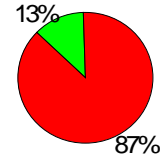
Tobak



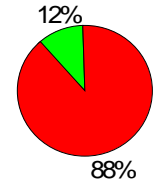
Enhet: Borås



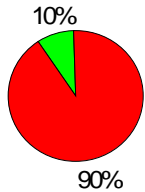
Enhet: Alingsås



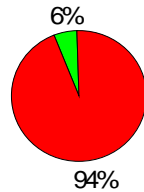
Enhet: Falun



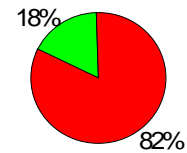
Enhet: Kungälv



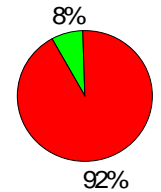
Enhet: Eksjö



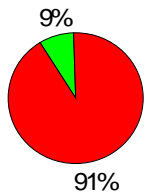
Enhet: Skövde



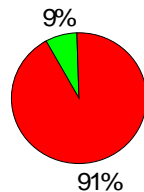
Enhet: Trelleborg



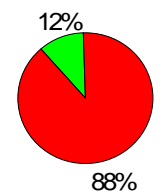
Enhet: Uddevåla



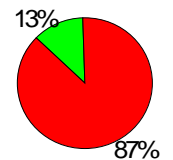
Enhet: Sahlgrenska



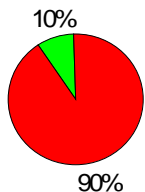
Enhet: Skene



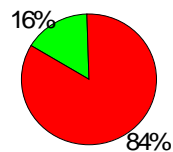
Enhet: Gävle



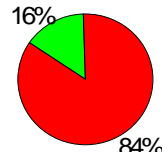
Enhet: Sandviken



Enhet: Enköping

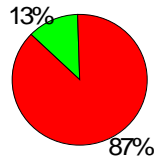


Enhet: Skien

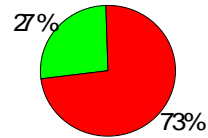


Enhet: Stavanger

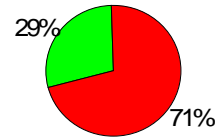
Uppgift om ASA



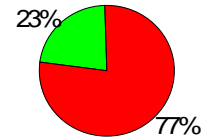
Enhet: Borås



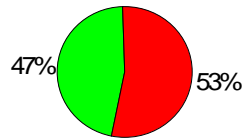
Enhet: Alingsås



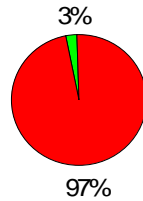
Enhet: Falun



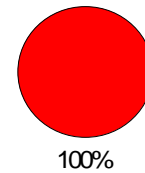
Enhet: Kungälv



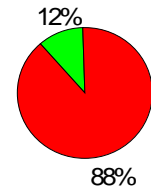
Enhet: Eksjö



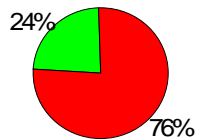
Enhet: Skövde



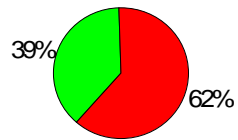
Enhet: Trelleborg



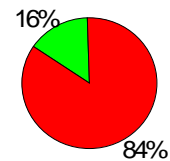
Enhet: Uddevalla



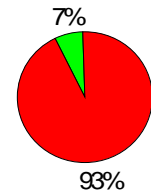
Enhet: Sahlgrenska



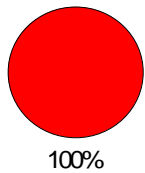
Enhet: Skene



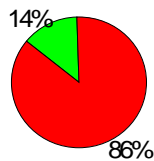
Enhet: Gävle



Enhet: Sandviken



Enhet: Enköping

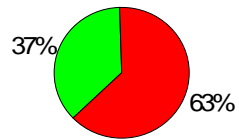


Enhet: Skien

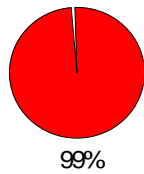


Enhet: Stavanger

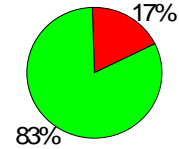
Diabetesbrevet för insulinbehandlade



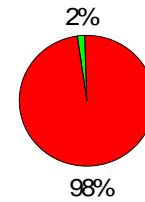
Enhet: Borås



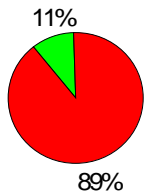
Enhet: Alingsås



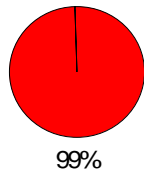
Enhet: Falun



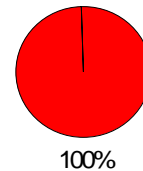
Enhet: Kungälv



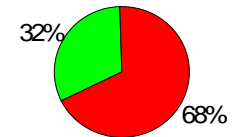
Enhet: Eksjö



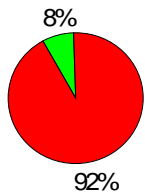
Enhet: Skövde



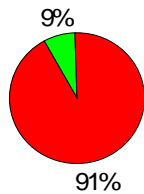
Enhet: Trelleborg



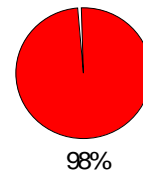
Enhet: Uddevalla



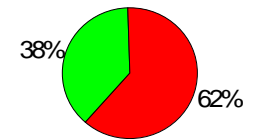
Enhet: Sahlgrenska



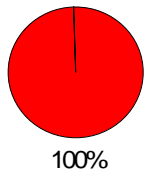
Enhet: Skene



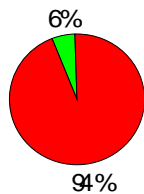
Enhet: Gävle



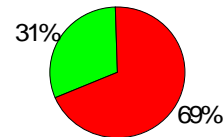
Enhet: Sandviken



Enhet: Enköping

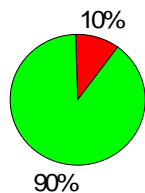


Enhet: Skien

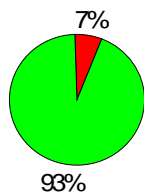


Enhet: Stavanger

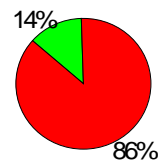
Användning av "Planer" hos insulinbehandlade



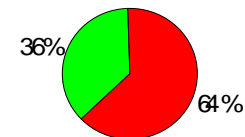
Enhet: Borås



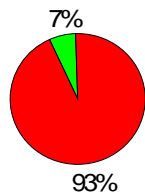
Enhet: Alingsås



Enhet: Falun



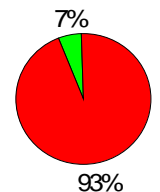
Enhet: Kungälv



Enhet: Eksjö



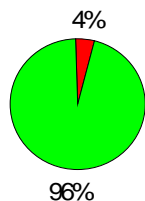
Enhet: Skövde



Enhet: Trelleborg



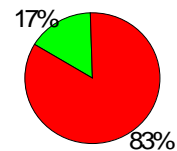
Enhet: Uddevalla



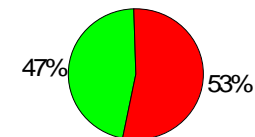
Enhet: Sahlgrenska



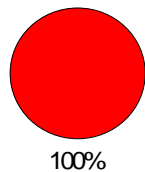
Enhet: Skene



Enhet: Gävle



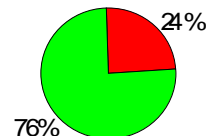
Enhet: Sandviken



Enhet: Enköping



Enhet: Skien



Enhet: Stavanger