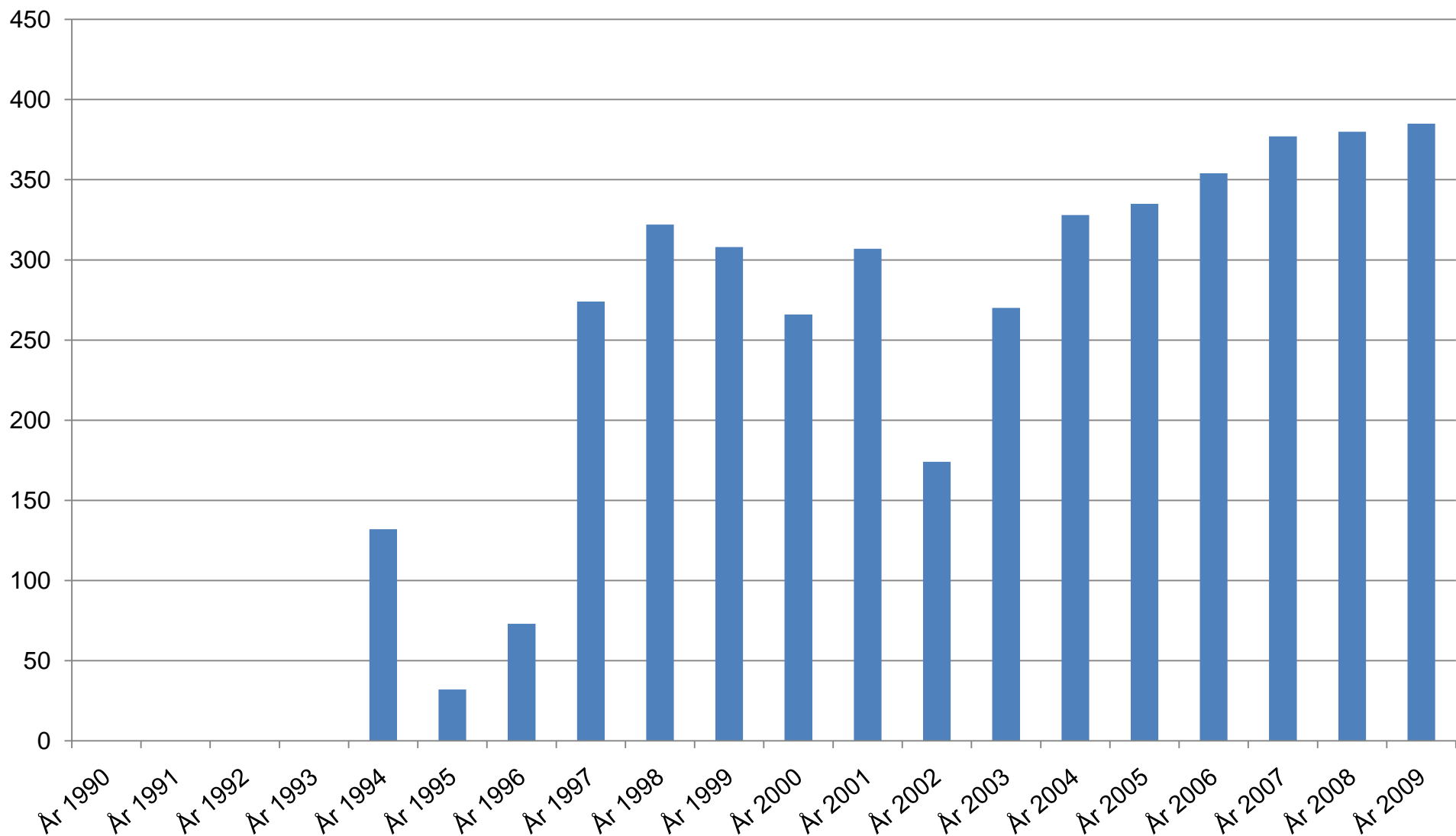
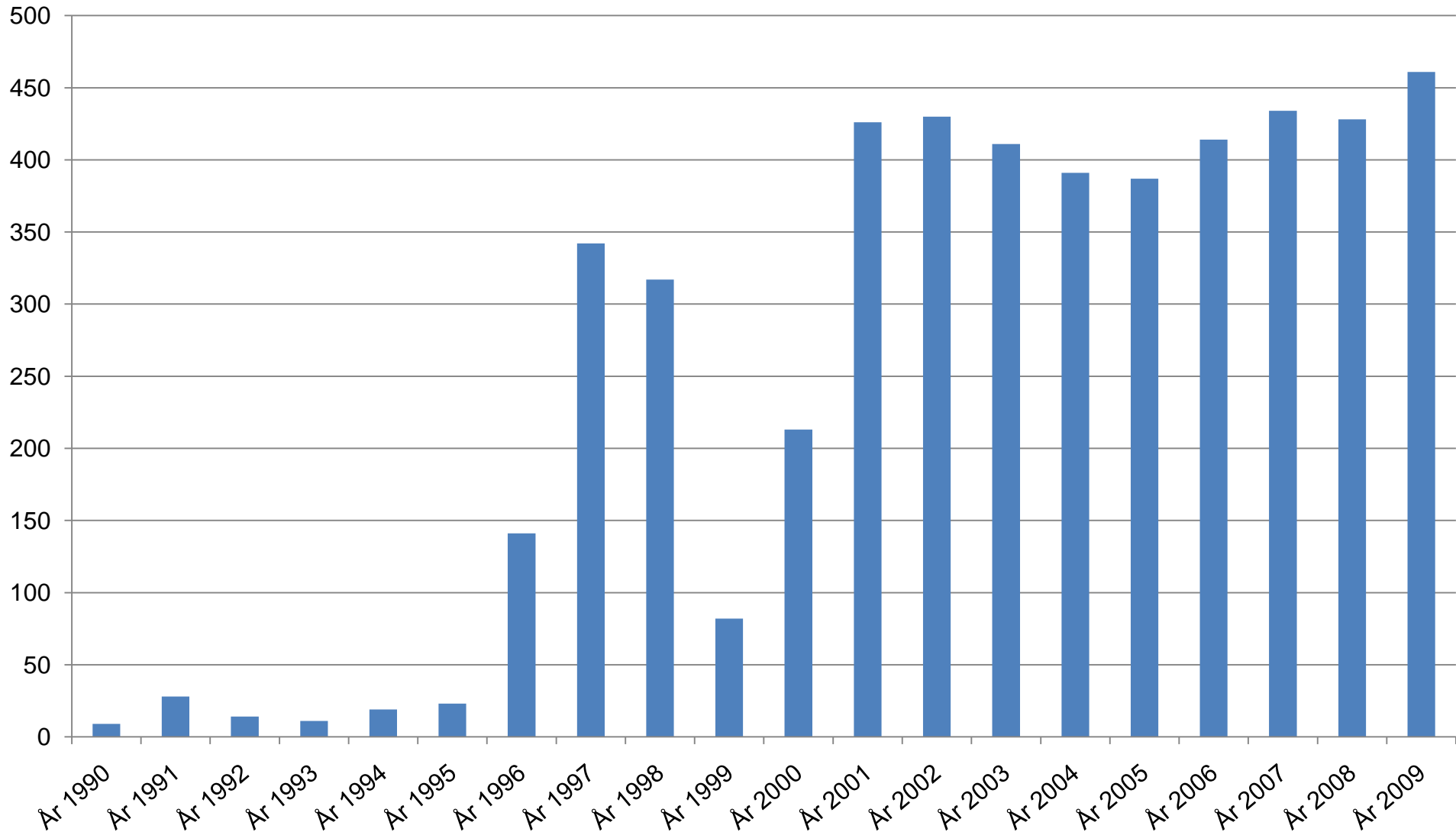


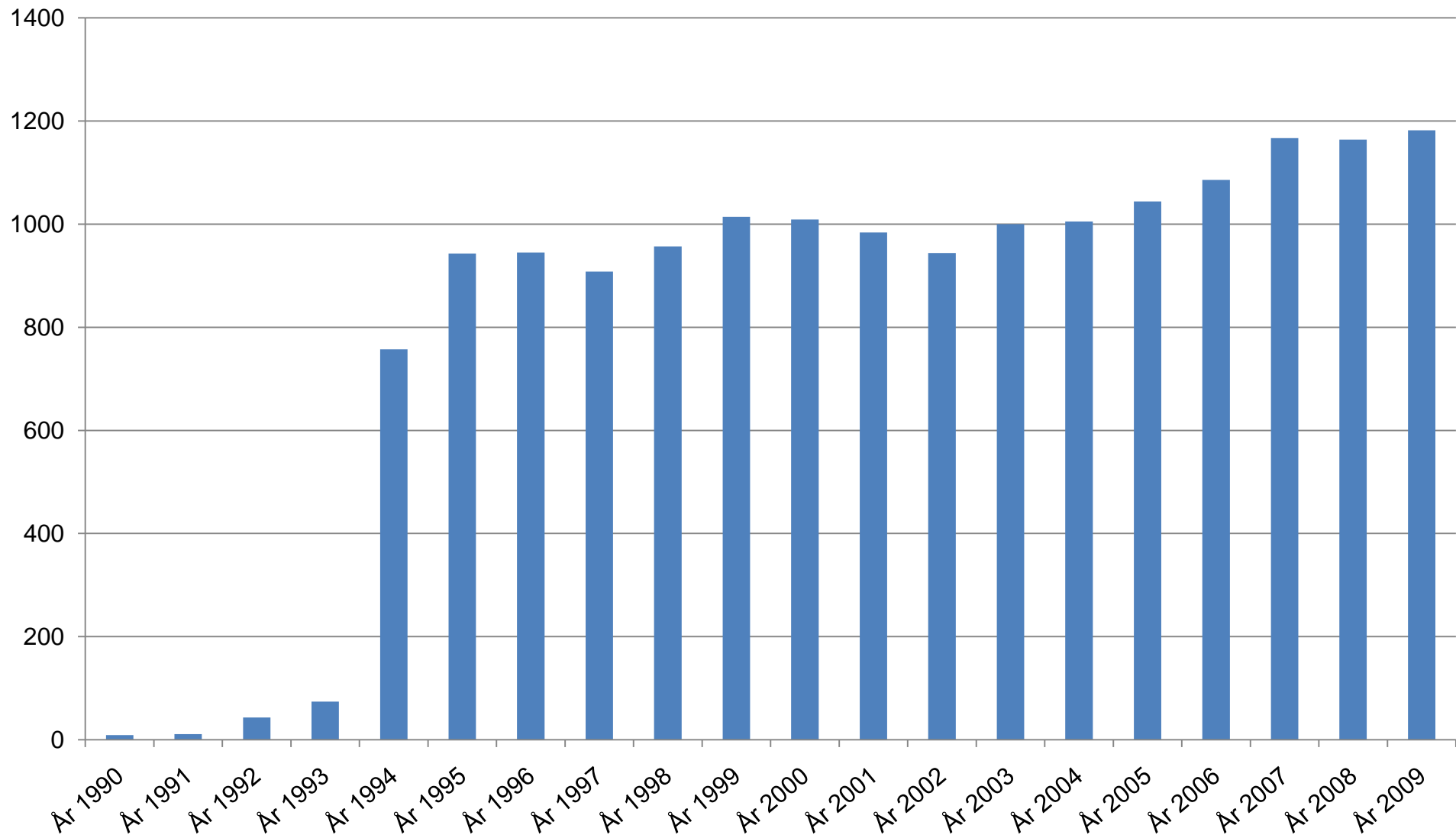
# Antal patienter/år 1990-01-01- 2009-12-31. Skene



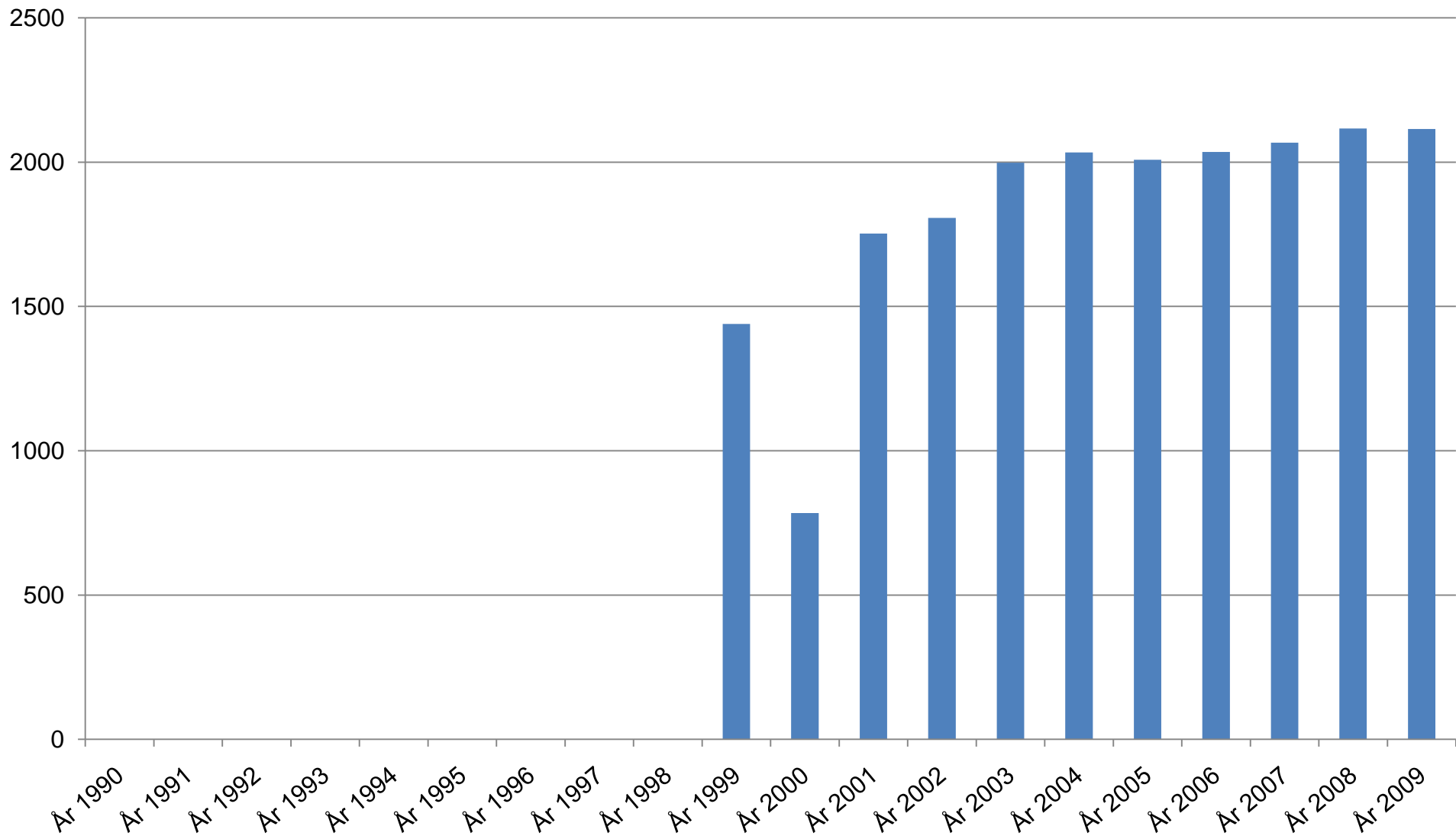
**Antal patienter/år 1990-01-01- 2009-12-31.**  
**Alingsås**



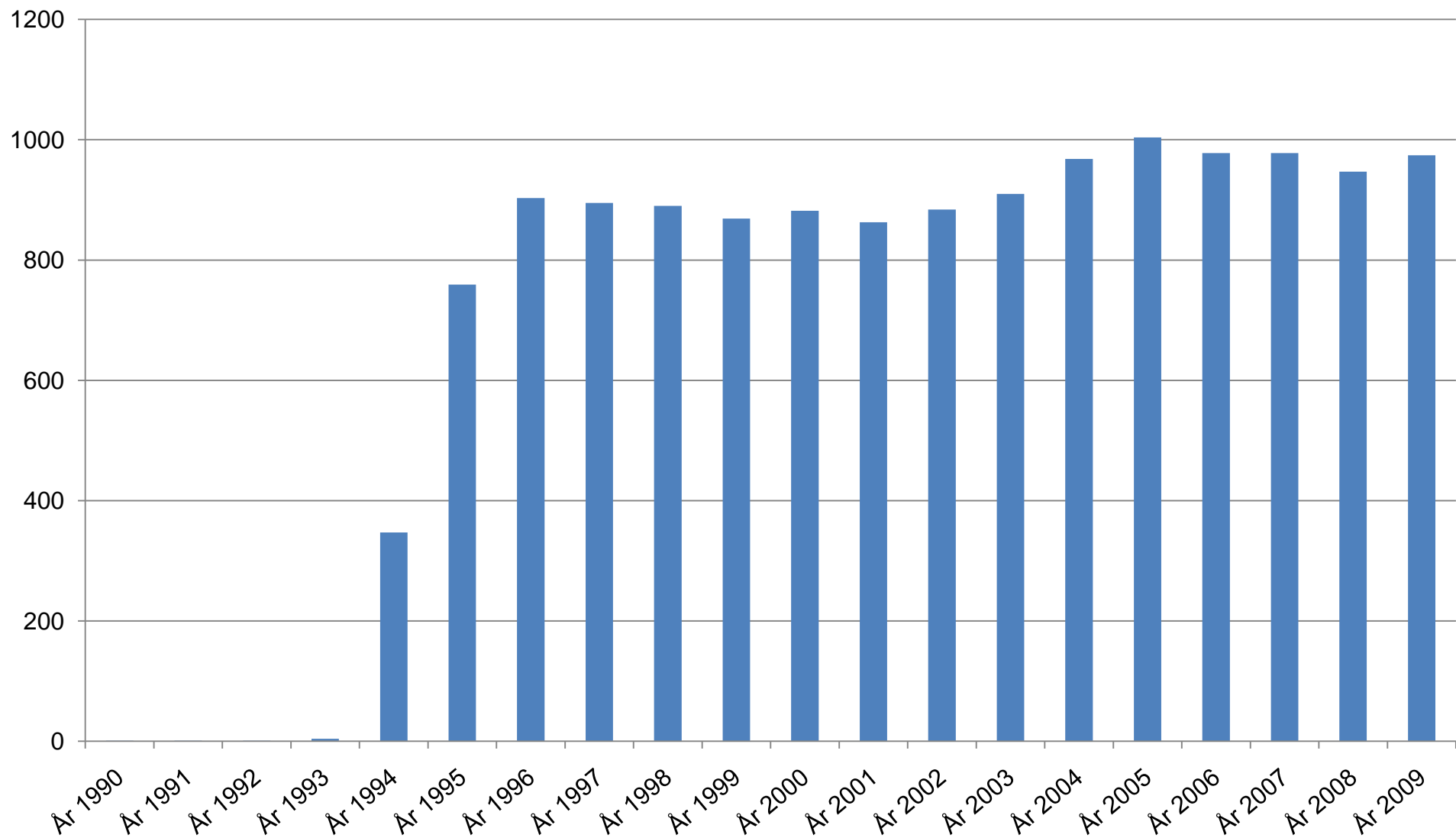
# Antal patienter/år 1990-01-01- 2009-12-31. Borås



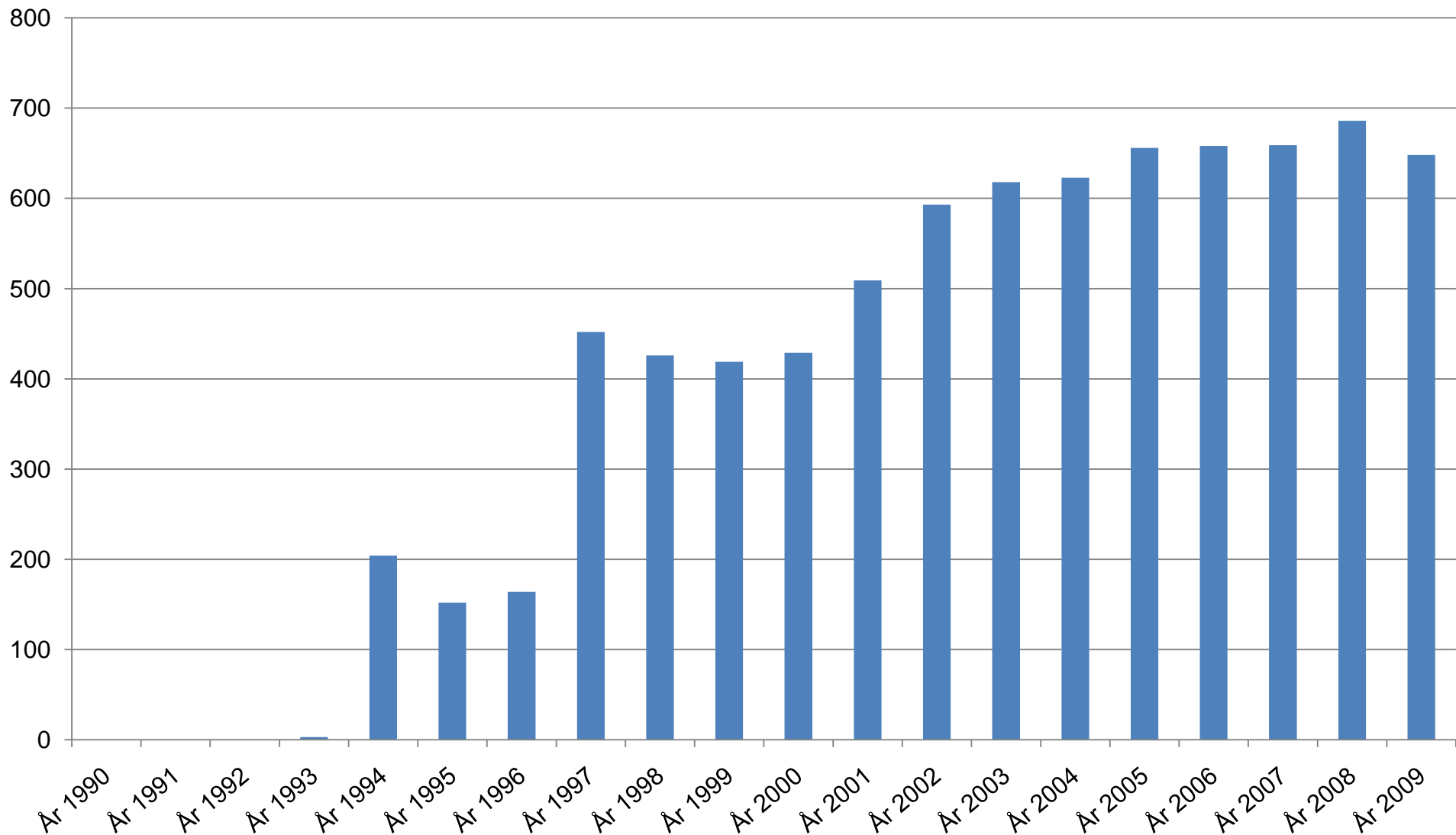
# Antal patienter/år 1990-01-01- 2009-12-31. Sahlgrenska



# Antal patienter/år 1990-01-01- 2009-12-31. Falun

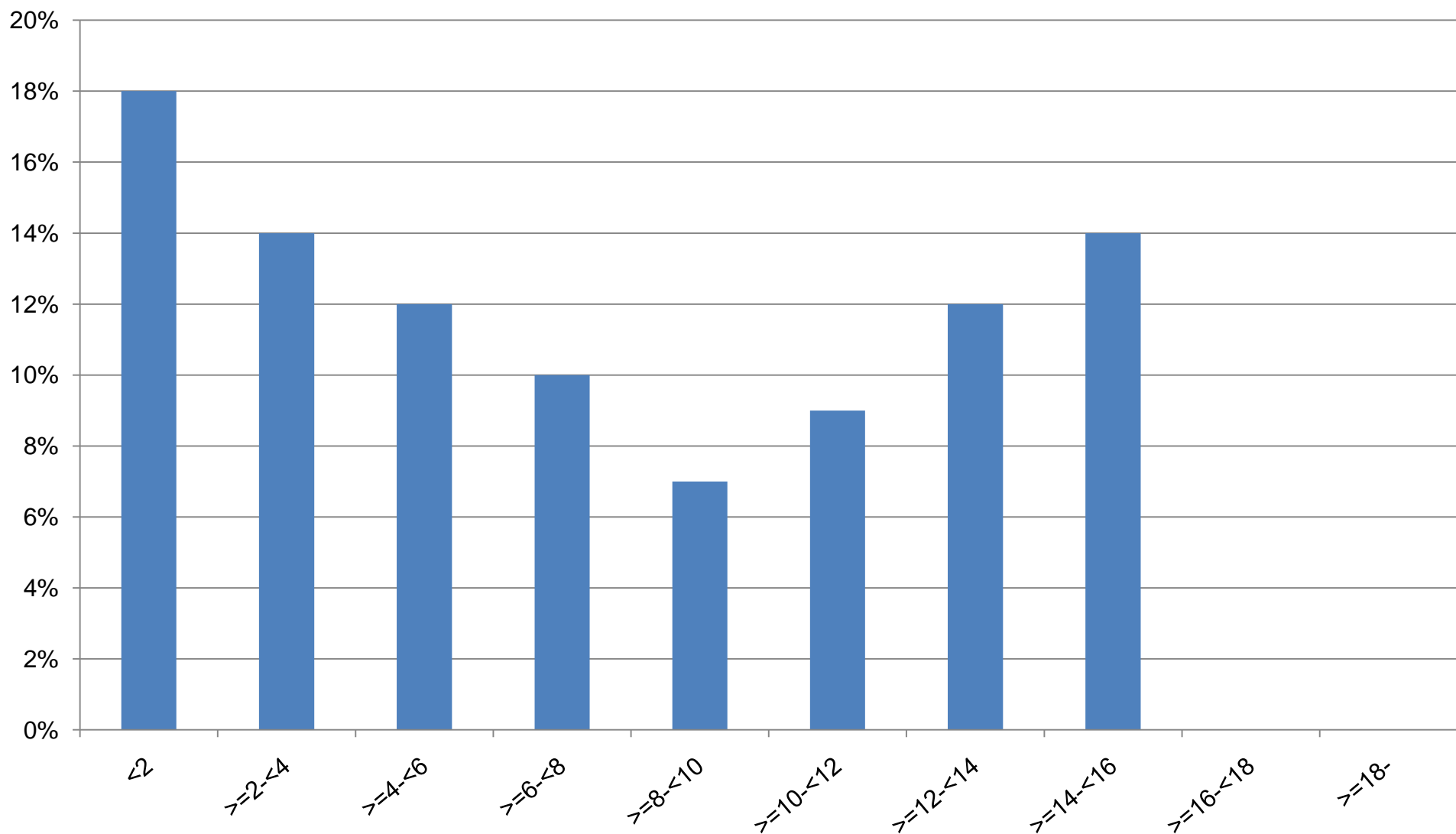


**Antal patienter/år 1990-01-01- 2009-12-31.  
Eksjö**

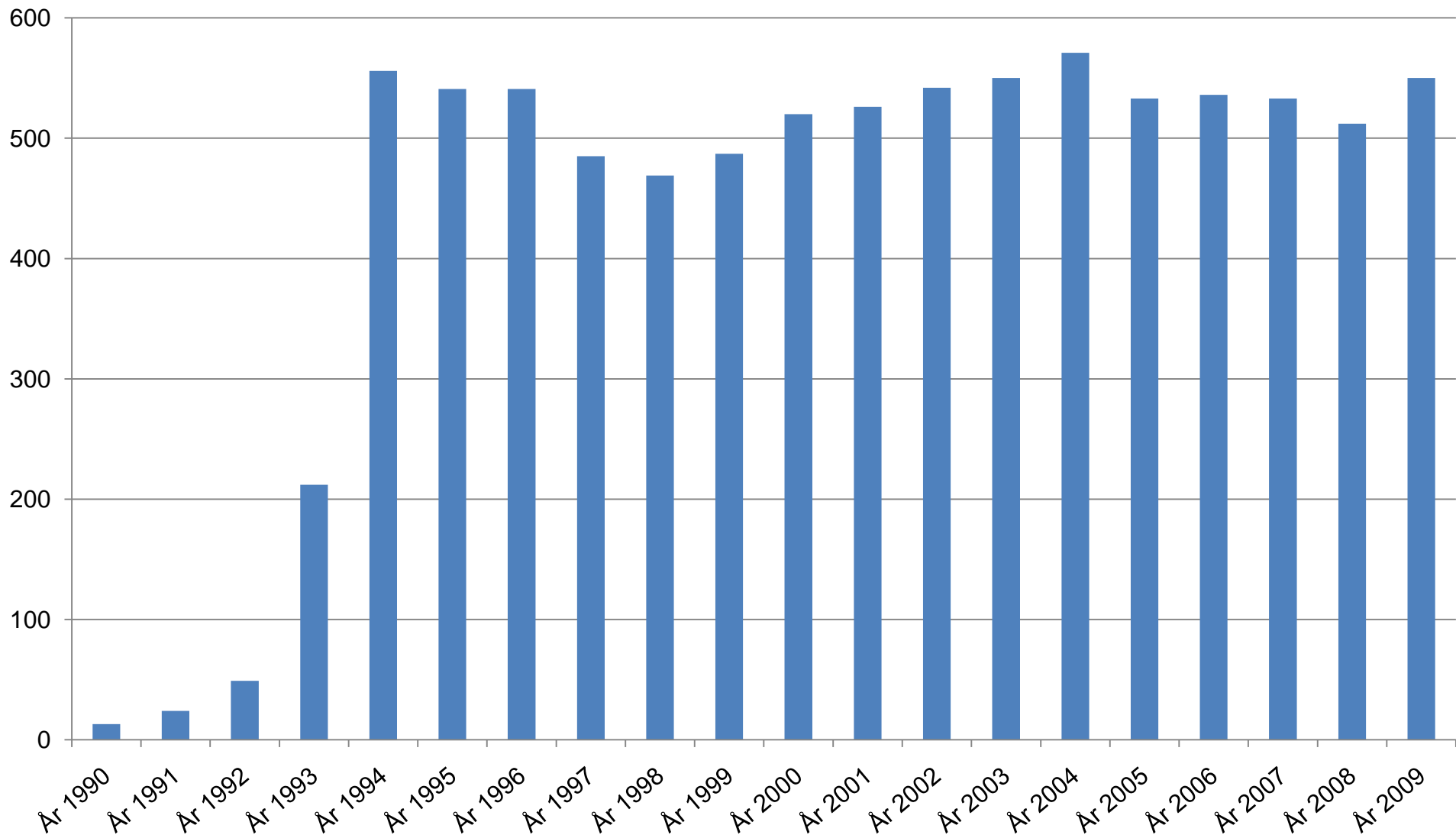


# Eksjö Höglandssjukhuset Antal år följda 1993-01-01- 2009-12-31.

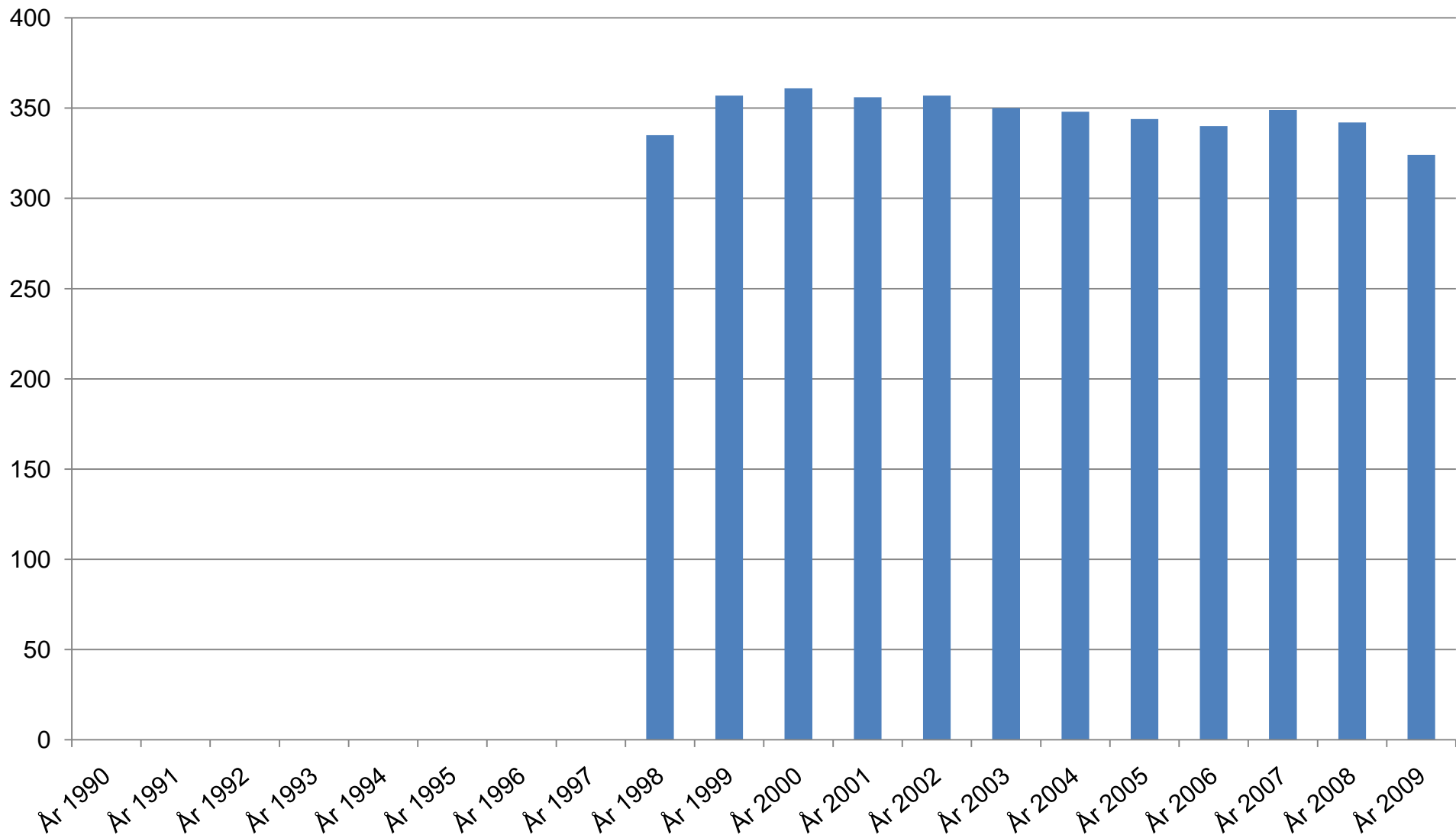
Median = 6.60 M = 7.46 Std = 5.05 N= 985 / P= 1132



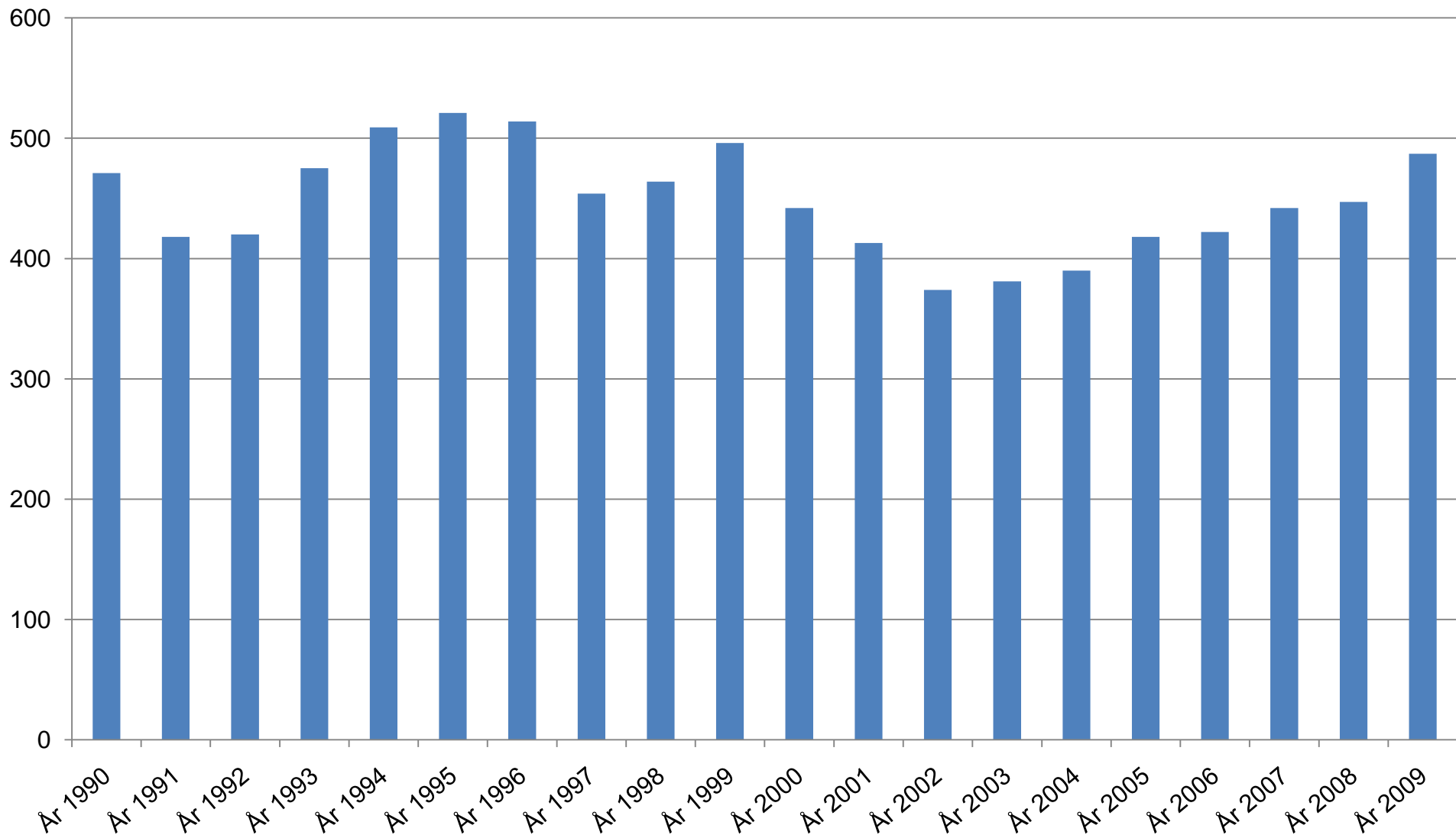
# Antal patienter/år 1990-01-01- 2009-12-31. Gävle



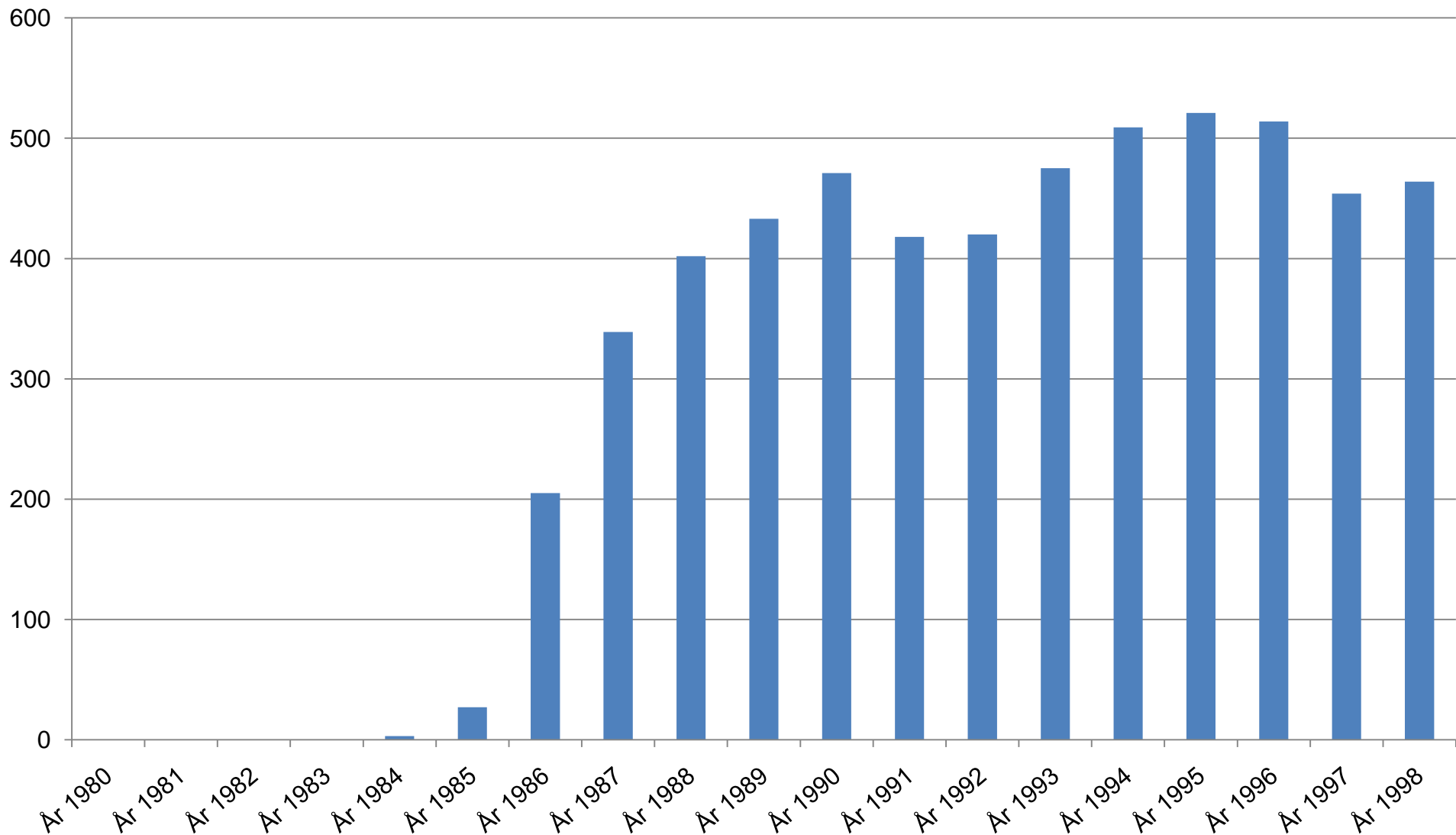
# Antal patienter/år 1990-01-01- 2009-12-31. Sandviken



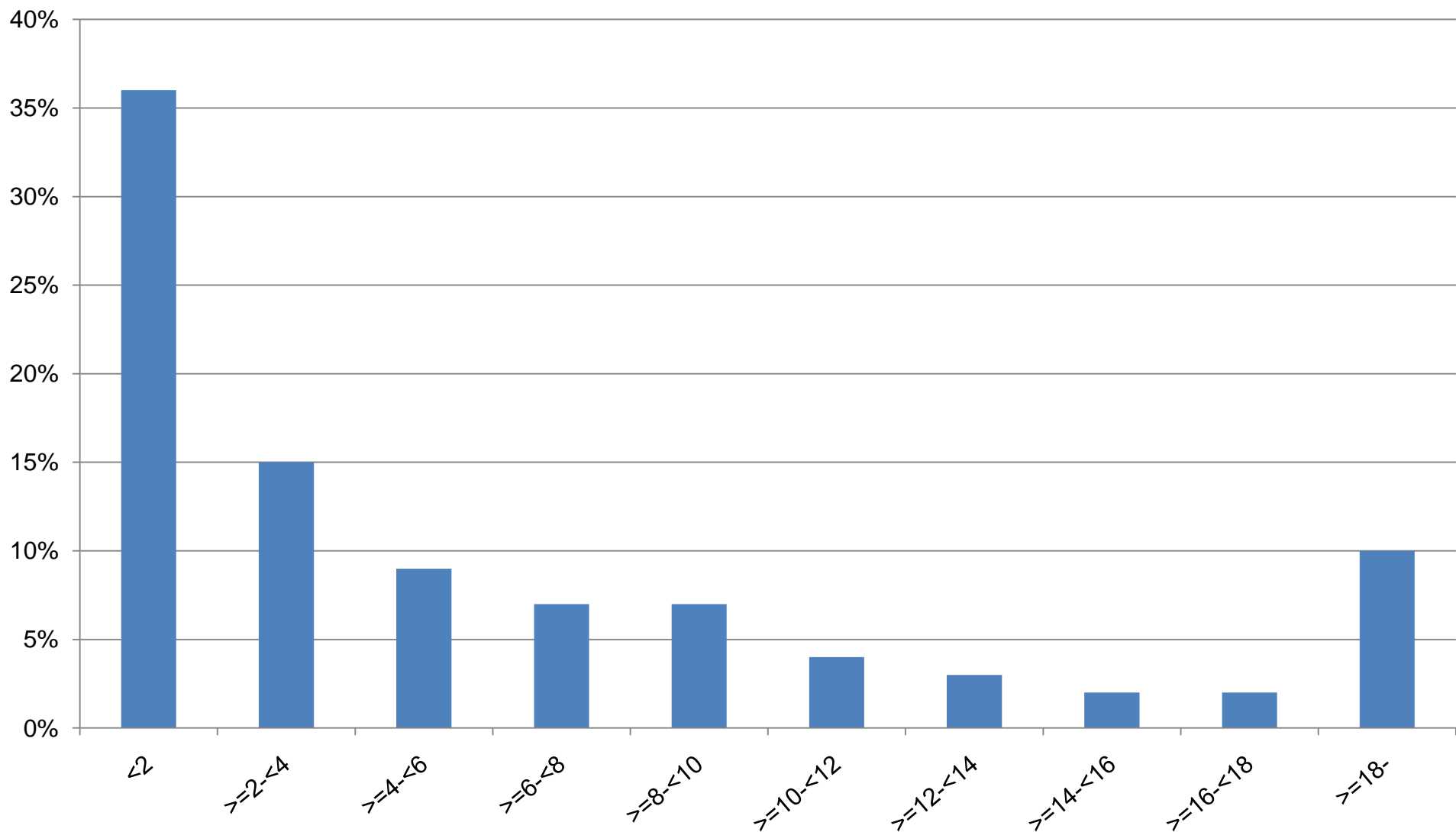
**Antal patienter/år 1990-01-01- 2009-12-31.  
Kungälv**



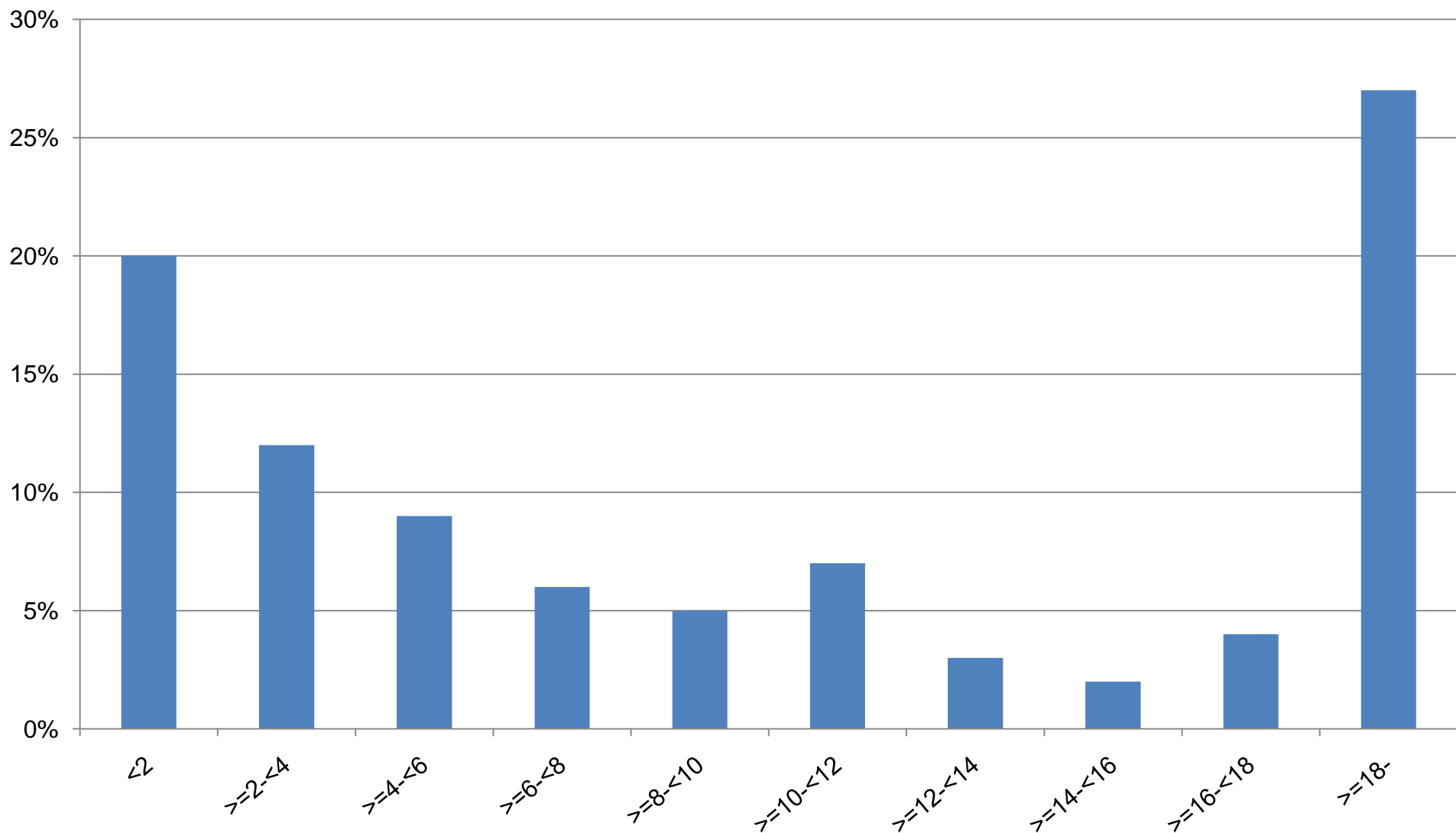
**Antal patienter/år 1980-01-01- 1998-12-31.  
Kungälv**



**Kungälv sjukhus Antal år följda 1985-01-01- 2009-12-31.**  
**Median = 3.70 M = 6.38 Std = 6.81 N= 1511 / P= 2006**



**Kungälv sjukhus Antal år följda 2009-01-01- 2009-12-31.**  
**Median = 8.30 M = 10.48 Std = 8.40 N= 439 / P= 487**



**Antal patienter/år 1990-01-01- 2009-12-31.  
Uddevalla**

