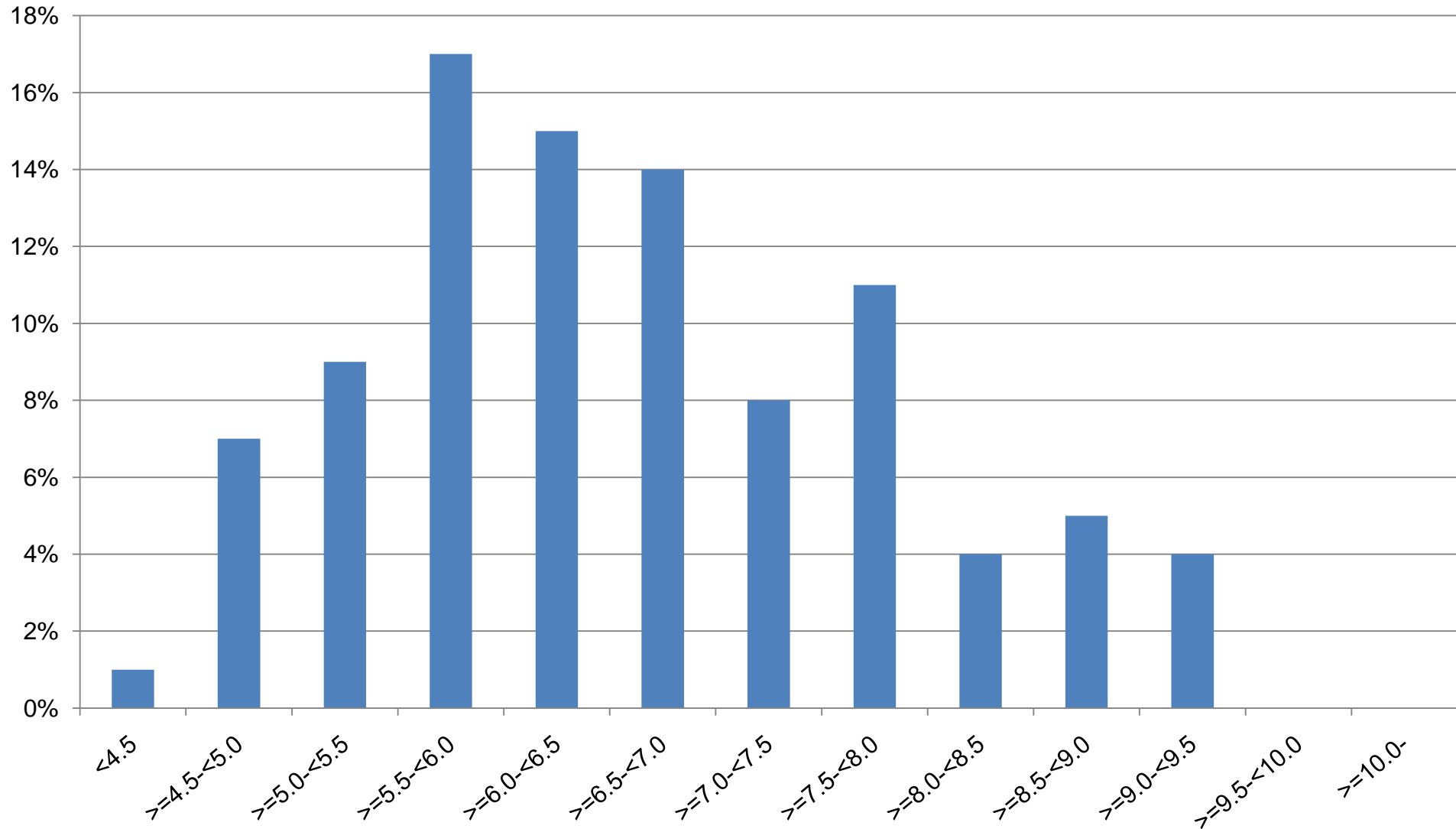


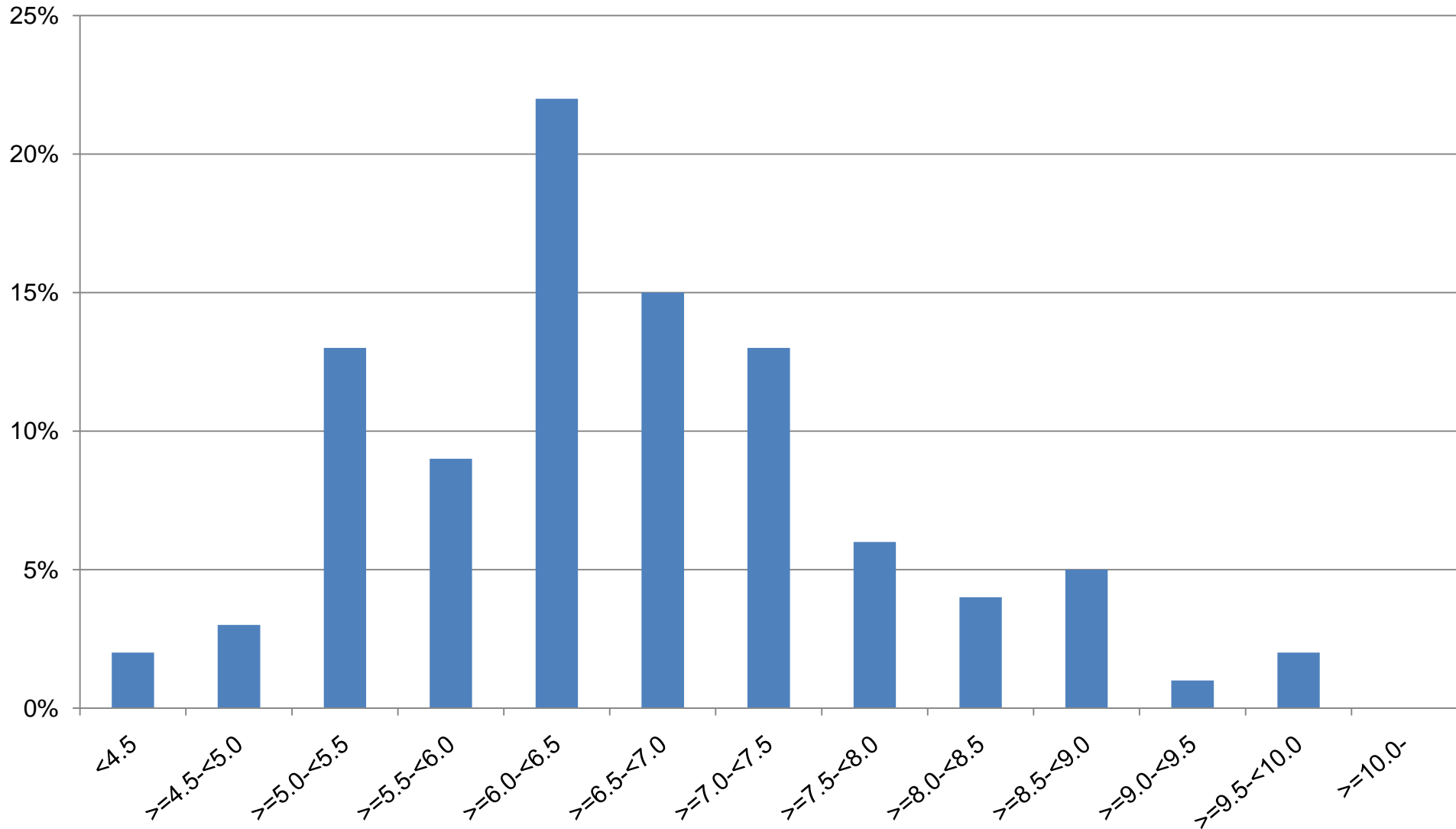
Uddevalla sjukhus HbA1c vid E<0.5 2009-01-01- 2009-12-31.

Median = 6.40 M = 6.56 Std = 1.24 N= 114 / P= 489

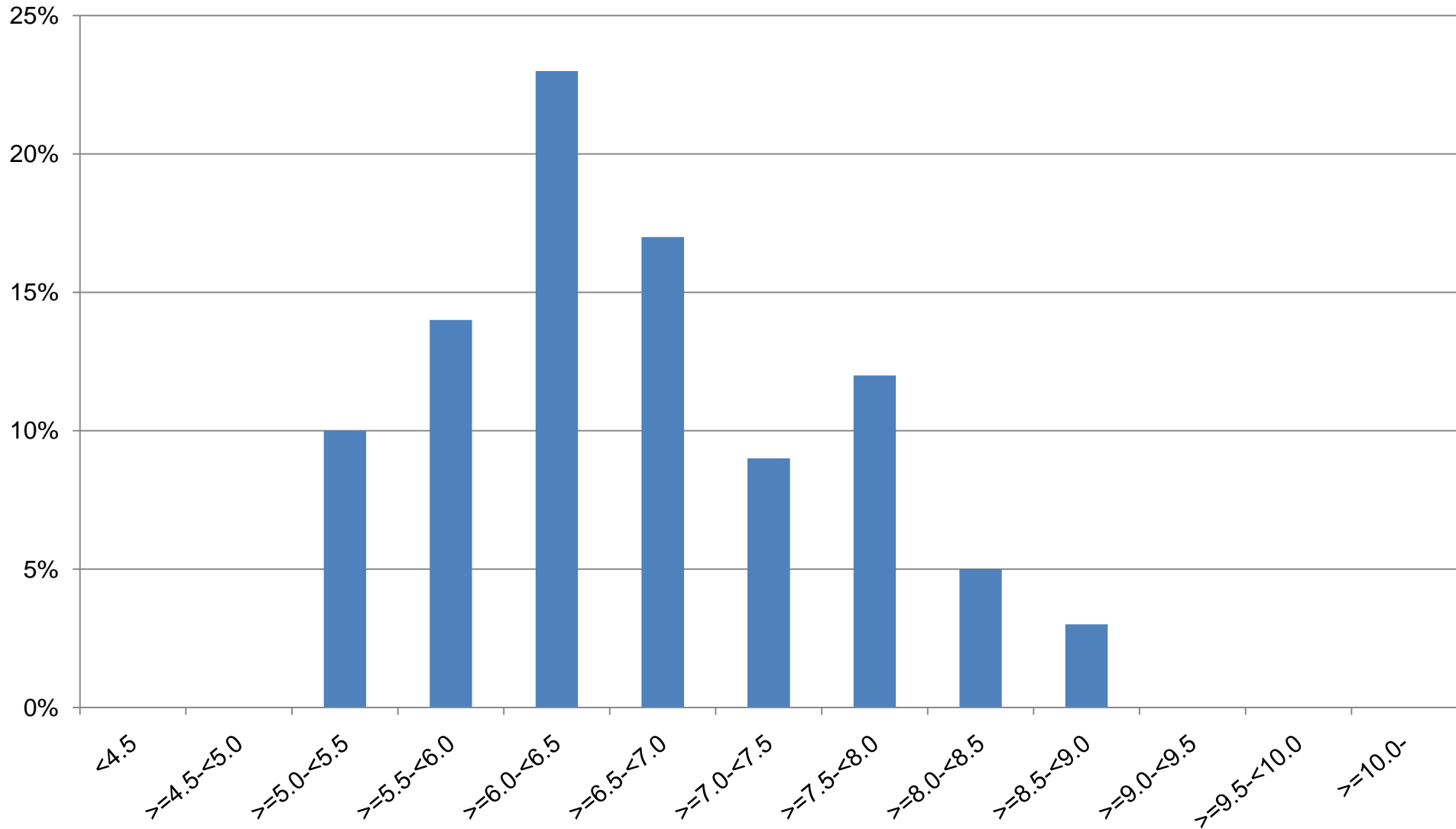


Eksjö Högländssjukhuset HbA1c vid E<0.5 2009-01-01- 2009-12-31.

Median = 6.40 M = 6.60 Std = 1.20 N= 131 / P= 648

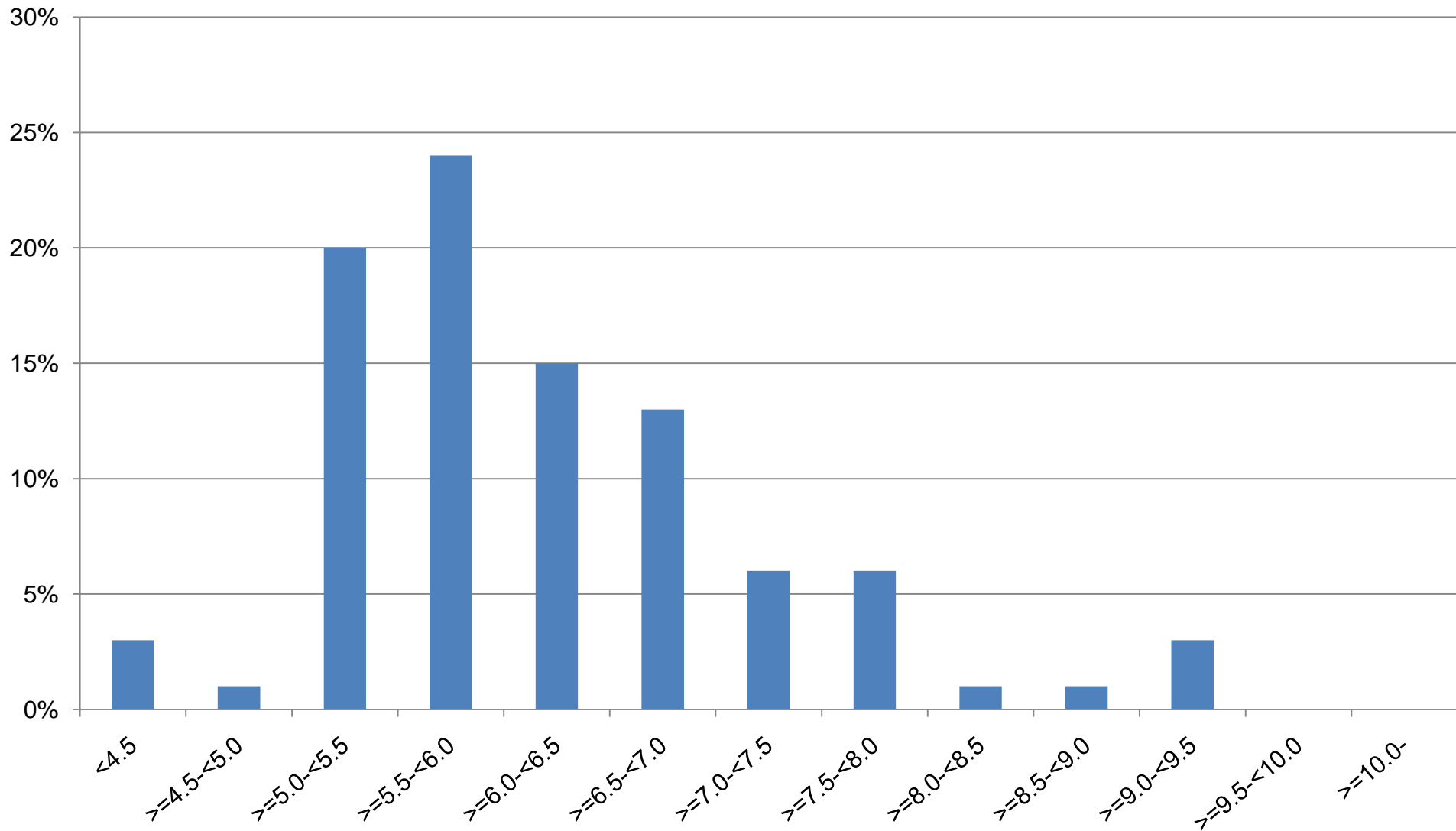


Gävle sjukhus HbA1c vid E<0.5 2009-01-01- 2009-12-31.
Median = 6.50 M = 6.61 Std = 1.11 N= 121 / P= 550

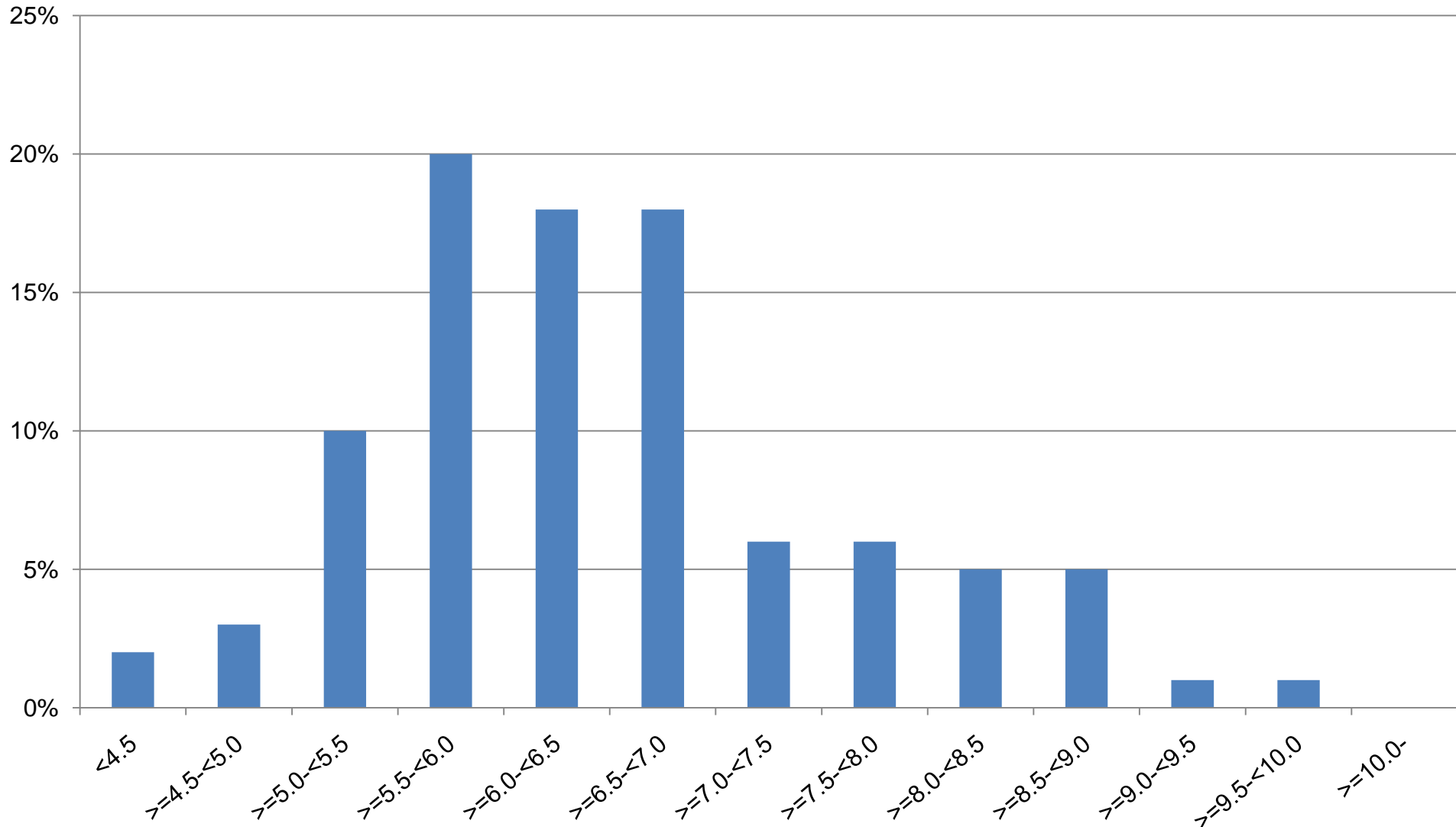


Sandviken sjukhus HbA1c vid E<0.5 2009-01-01- 2009-12-31.

Median = 5.90 M = 6.17 Std = 1.10 N= 58 / P= 324

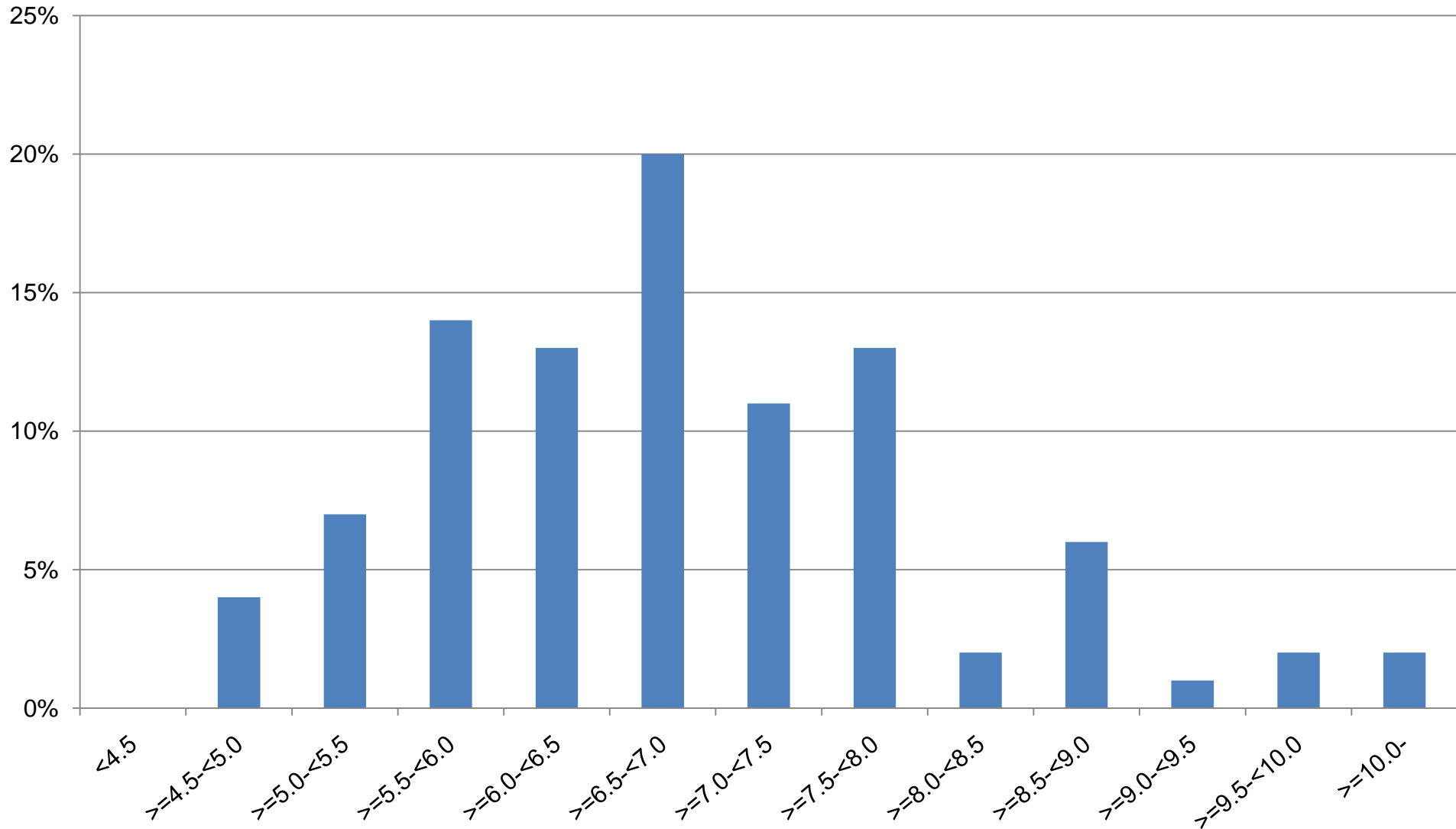


Skene lasarett HbA1c vid E<0.5 2009-01-01- 2009-12-31.
Median = 6.20 M = 6.41 Std = 1.17 N= 77 / P= 385

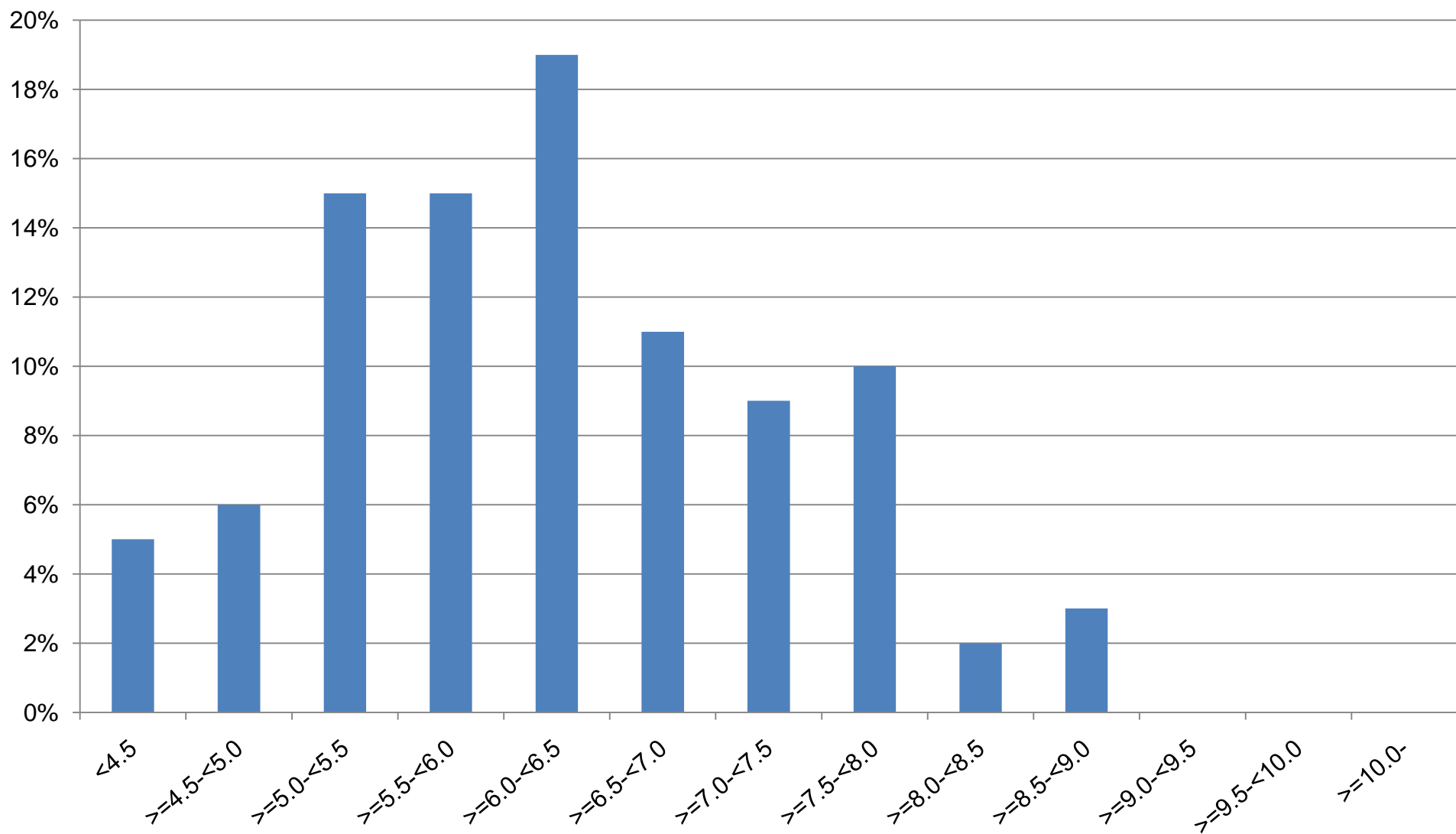


Alingsås sjukhus HbA1c vid E<0.5 2009-01-01- 2009-12-31.

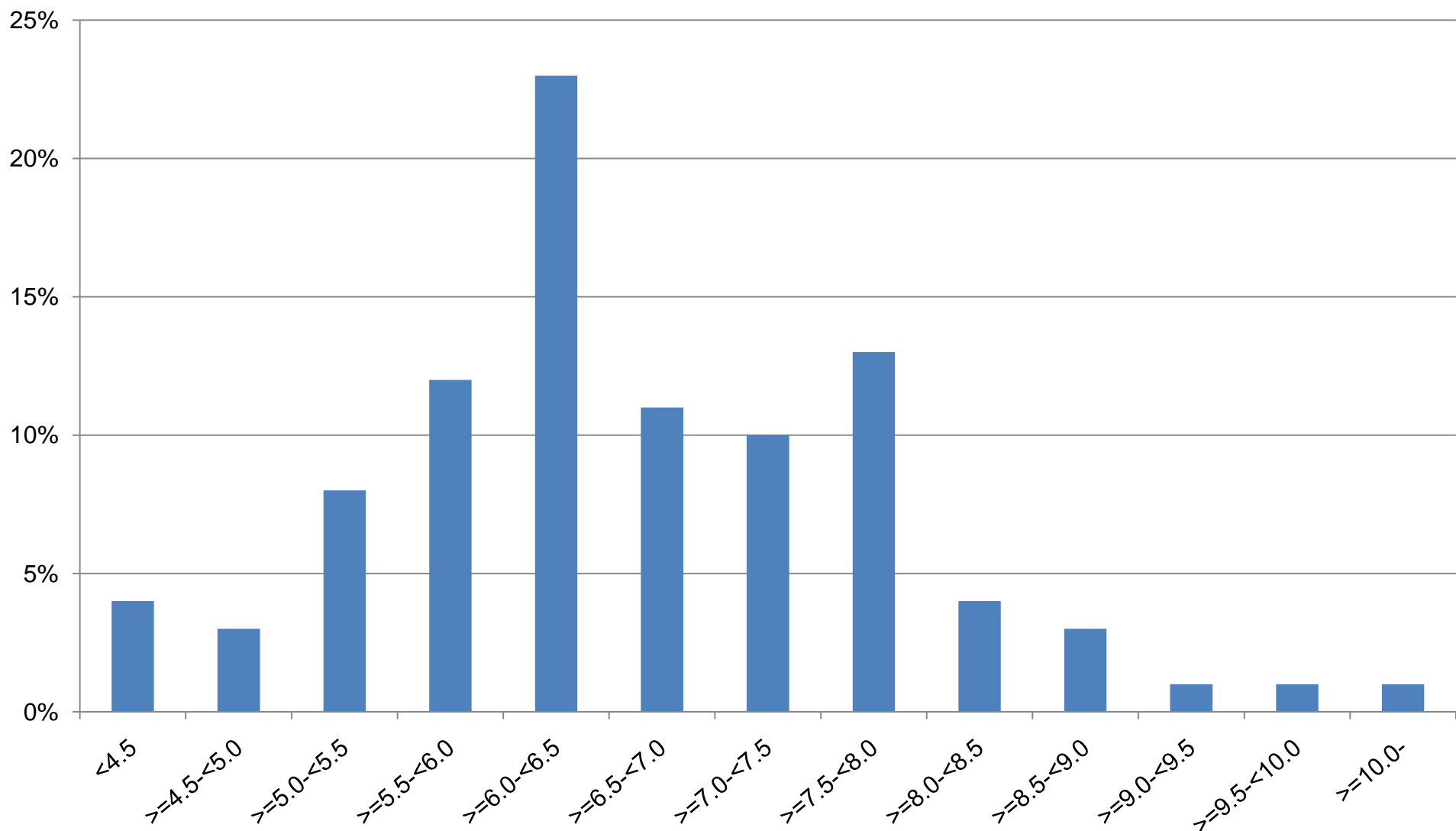
Median = 6.60 M = 6.89 Std = 1.45 N= 89 / P= 461



Borås lasarett HbA1c vid E<0.5 2009-01-01- 2009-12-31.
Median = 6.20 M = 6.24 Std = 1.19 N= 205 / P= 1182

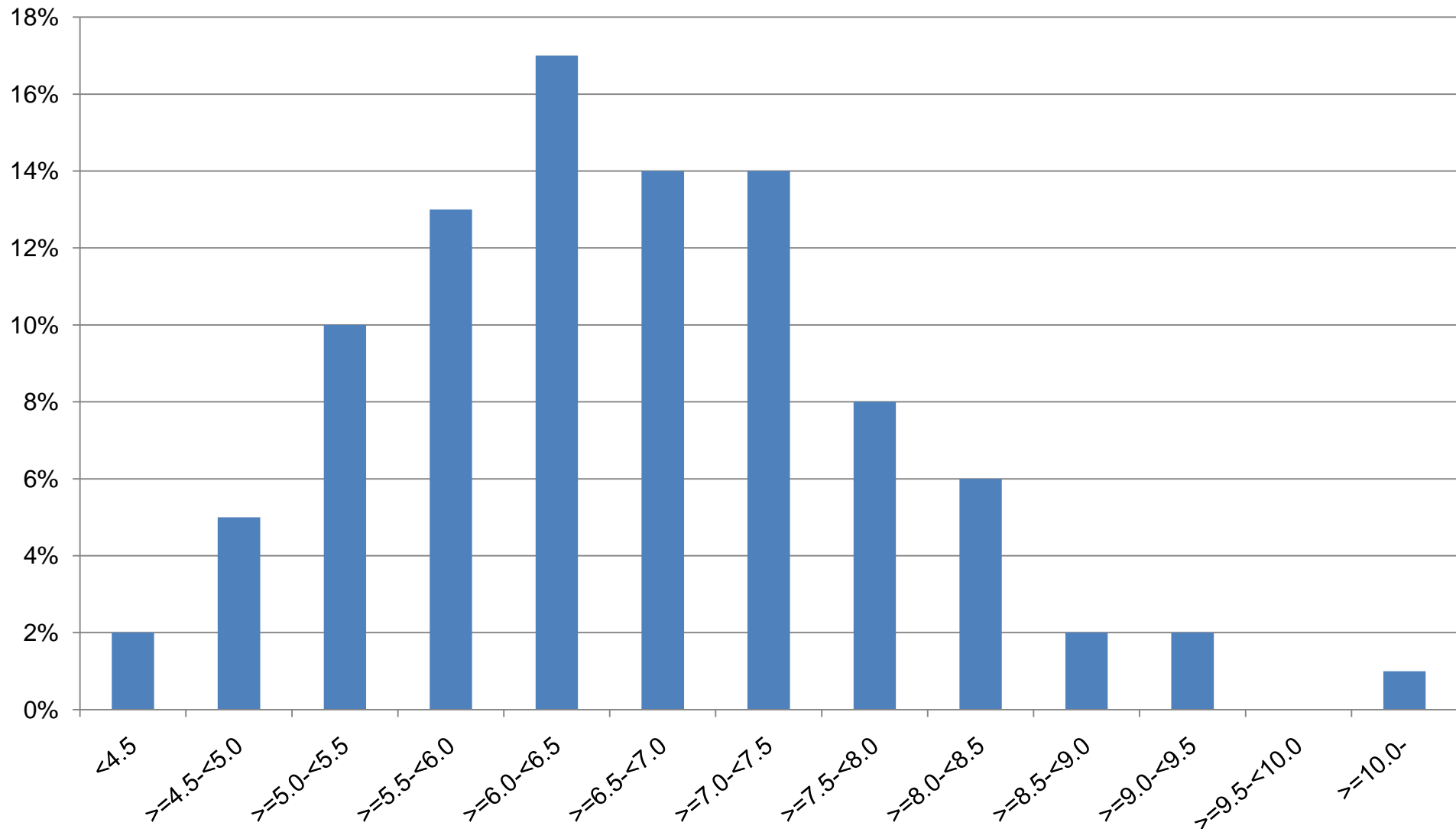


Falu lasarett HbA1c vid E<0.5 2009-01-01- 2009-12-31.
Median = 6.40 M = 6.65 Std = 1.41 N= 160 / P= 974



Sahlgrenska universitetssjukhuHbA1c vid E<0.5 2009-01-01- 2009-12-31.

Median = 6.50 M = 6.61 Std = 1.27 N= 553 / P= 2115



Kungälv sjukhus HbA1c vid E<0.5 2009-01-01- 2009-12-31.

Median = 6.30 M = 6.61 Std = 1.41 N= 102 / P= 487

