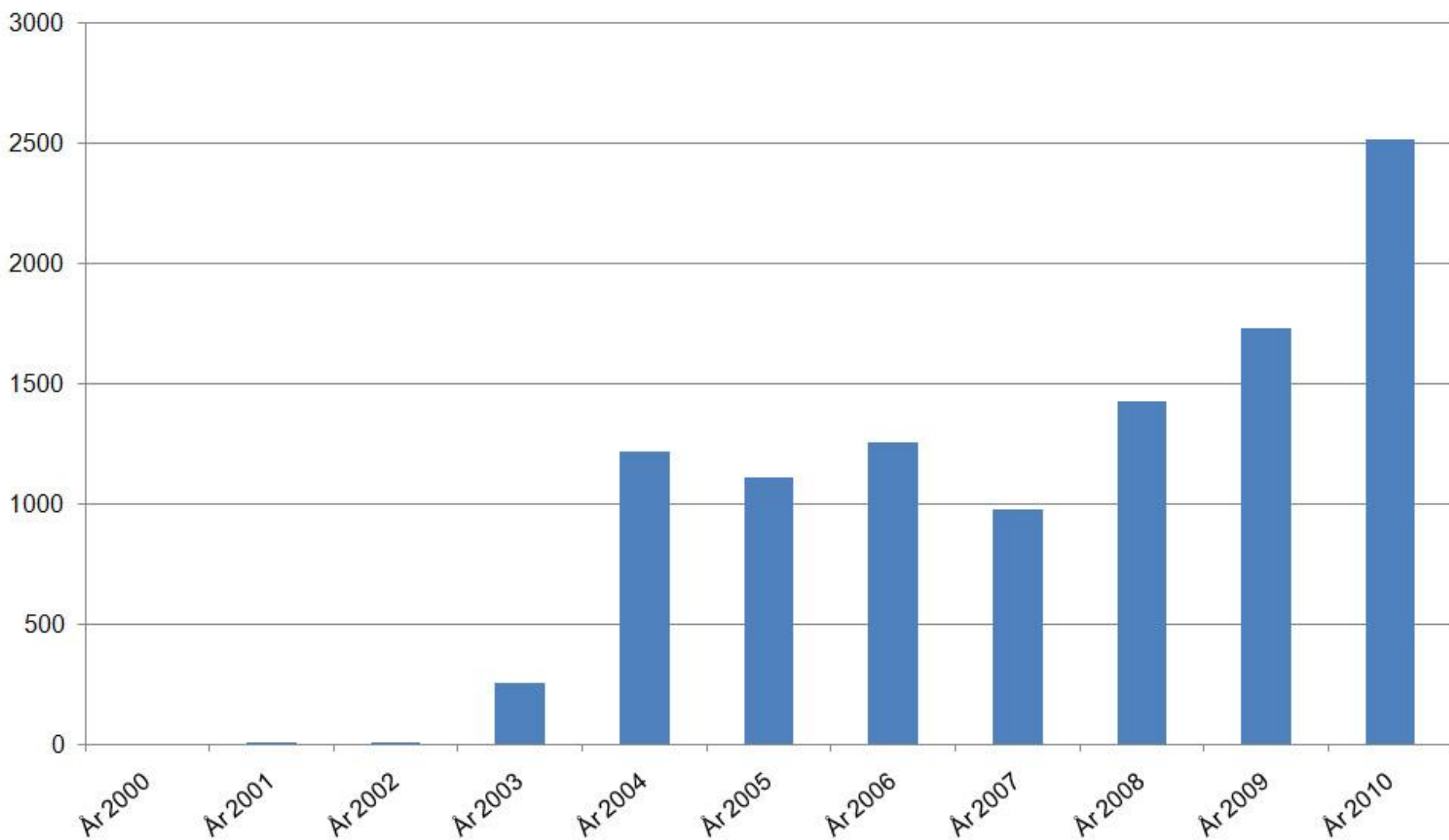
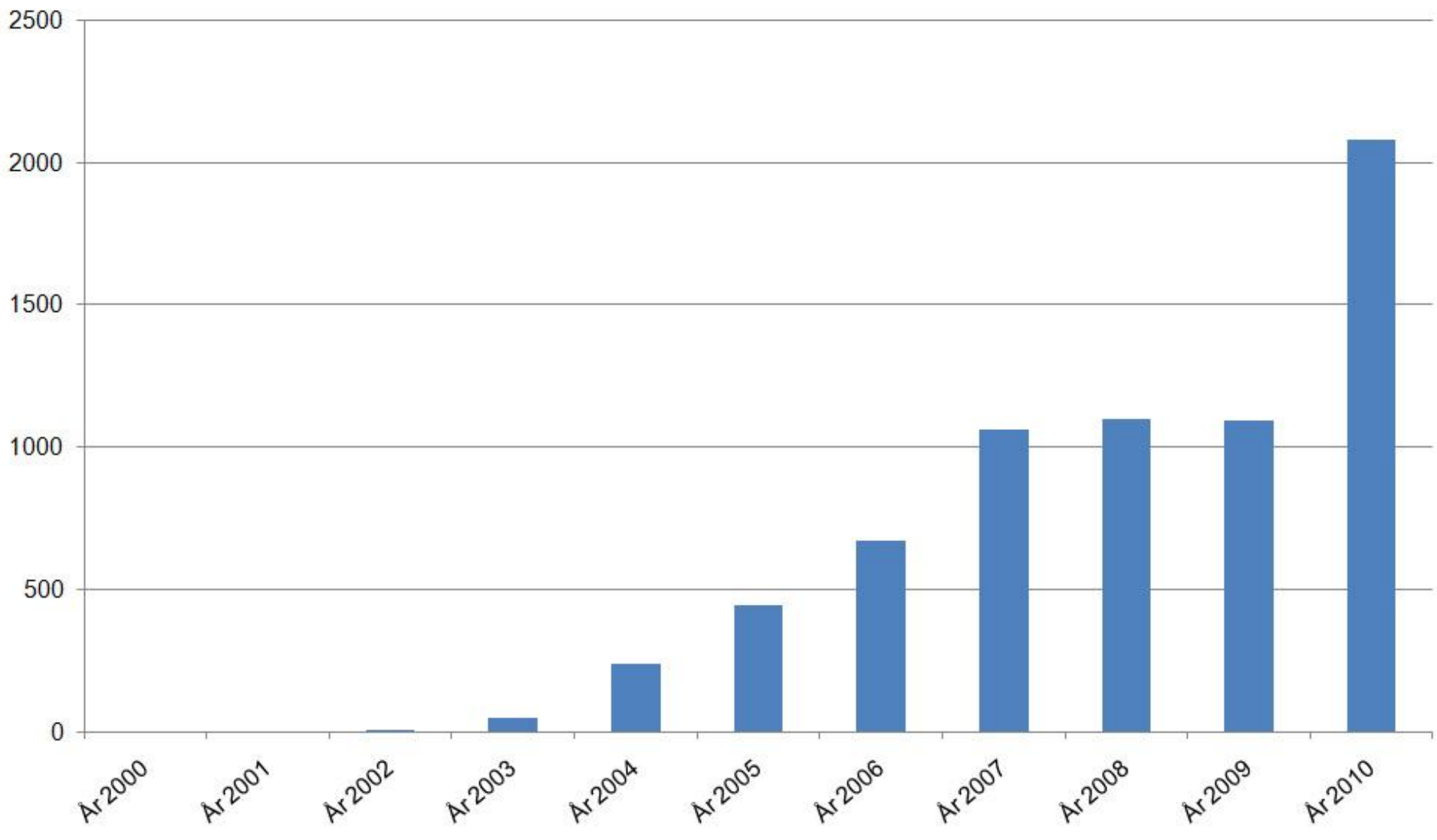


# Lunds universitetssjukhus - Bröstcancer/år 2000-01-01- 2010-12-31.

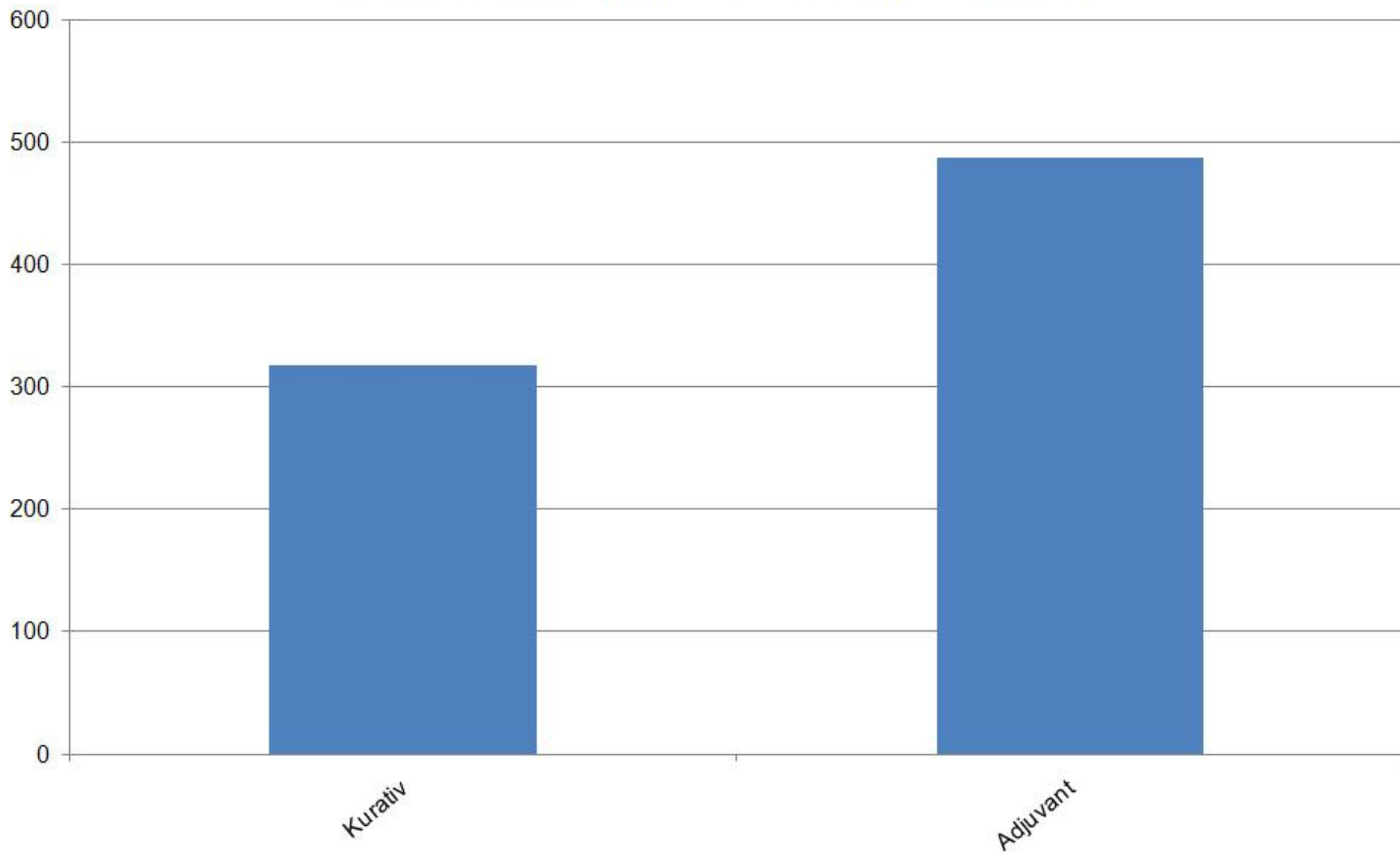
N= 5667



**Lunds universitetssjukhus - Colorektal cancer/år 2000-01-01- 2010-12-31.  
N= 5667**

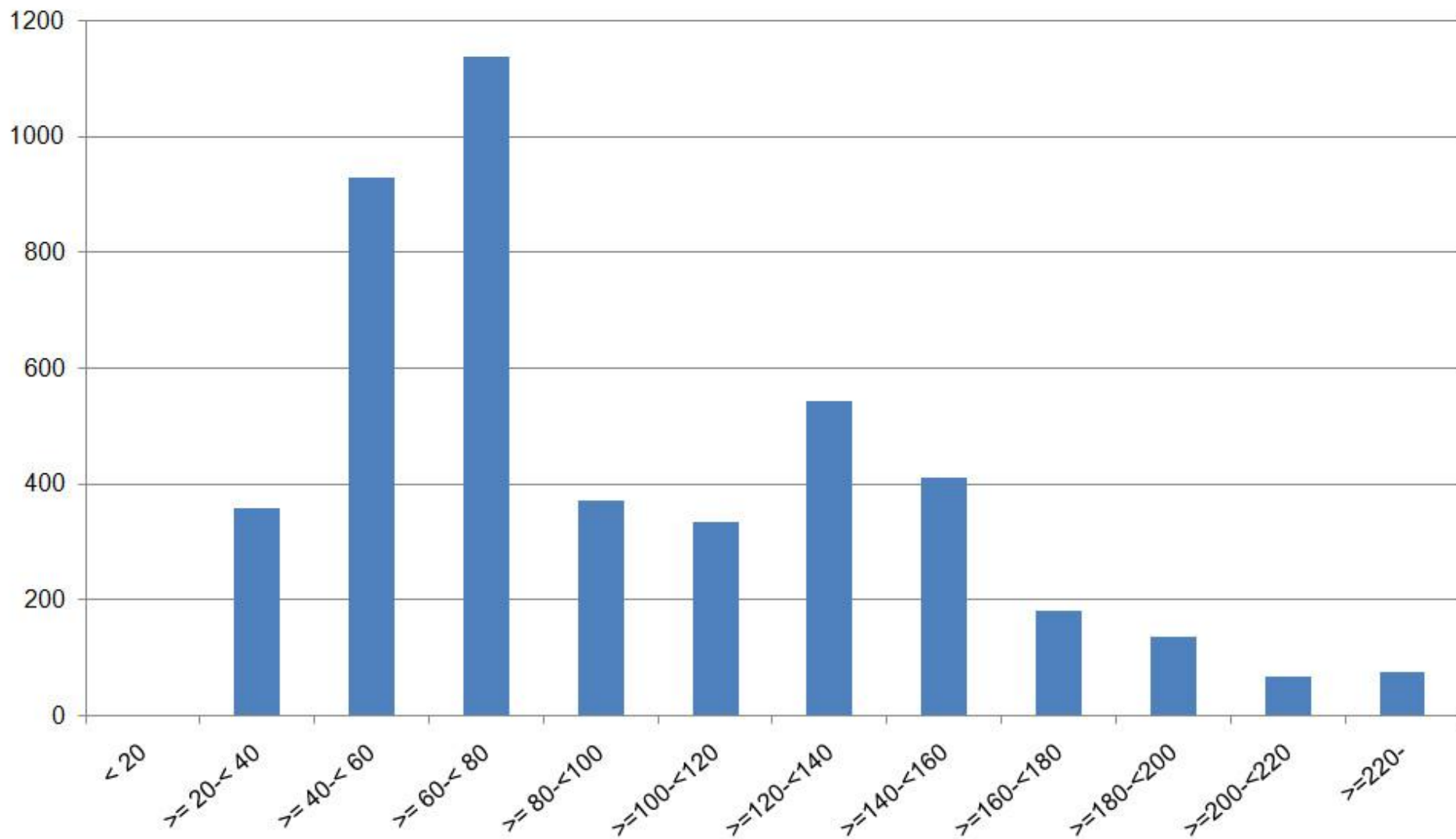


## Lunds universitetssjukhus - Behandlingsavsikt 2010



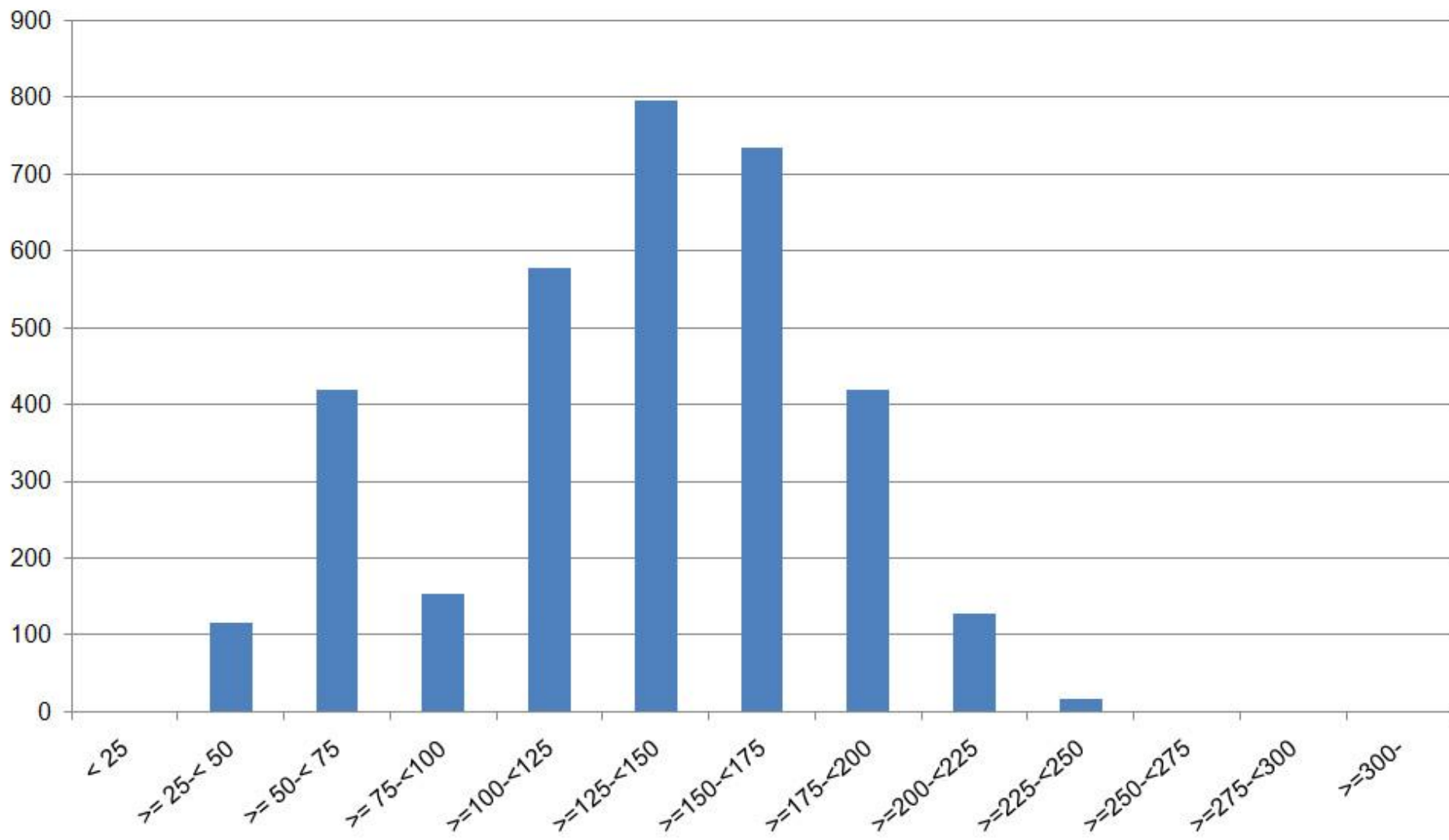
# Lunds universitetssjukhus - Dos Cisplatin 2000-01-01- 2010-12-31.

Median = 70.00 M = 96.69 Std = 64.65 N= 5667



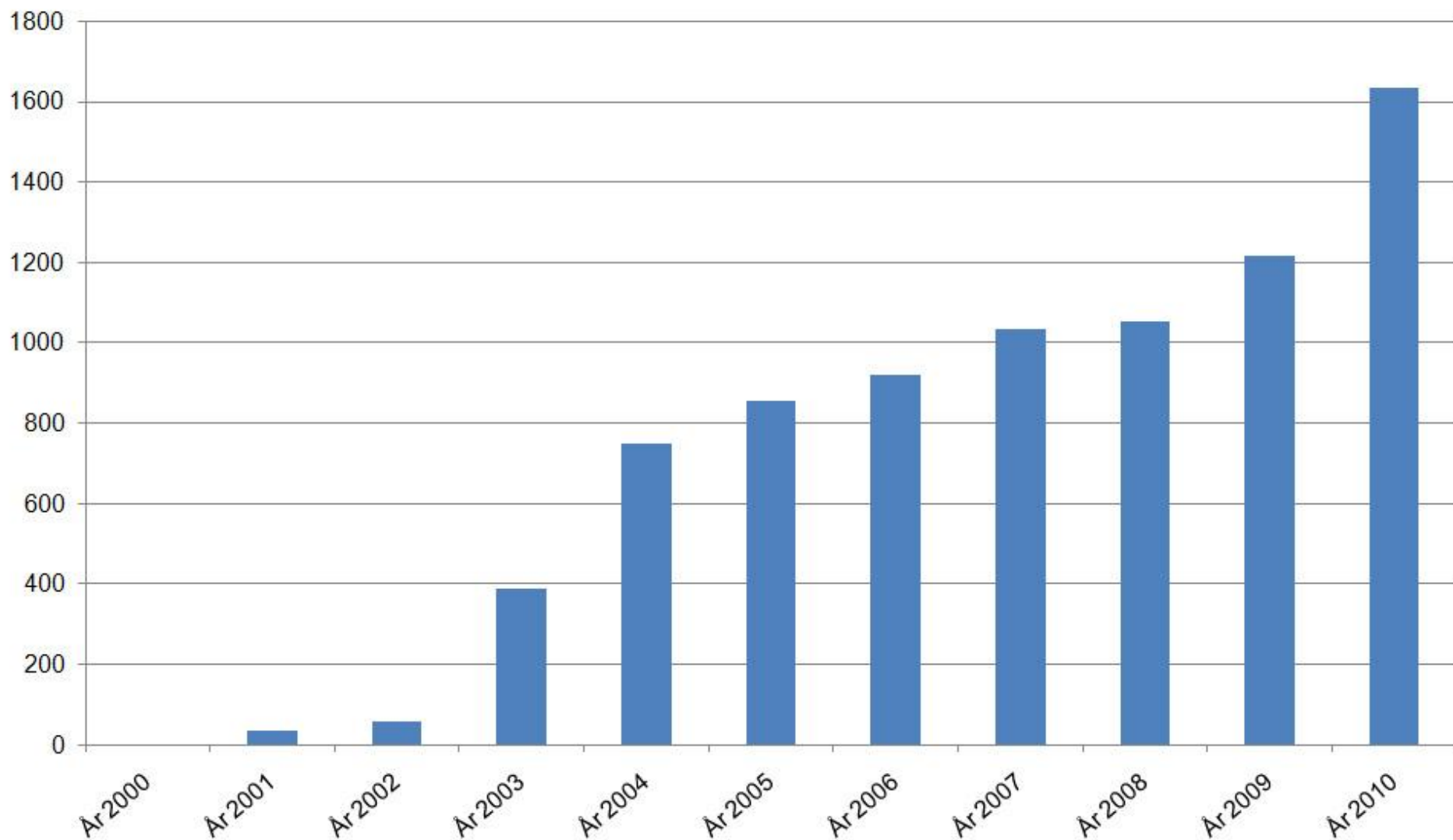
# Lunds universitetssjukhus - Dos Docetaxel 2000-01-01- 2010-12-31.

Median = 139.00 M = 130.85 Std = 44.14

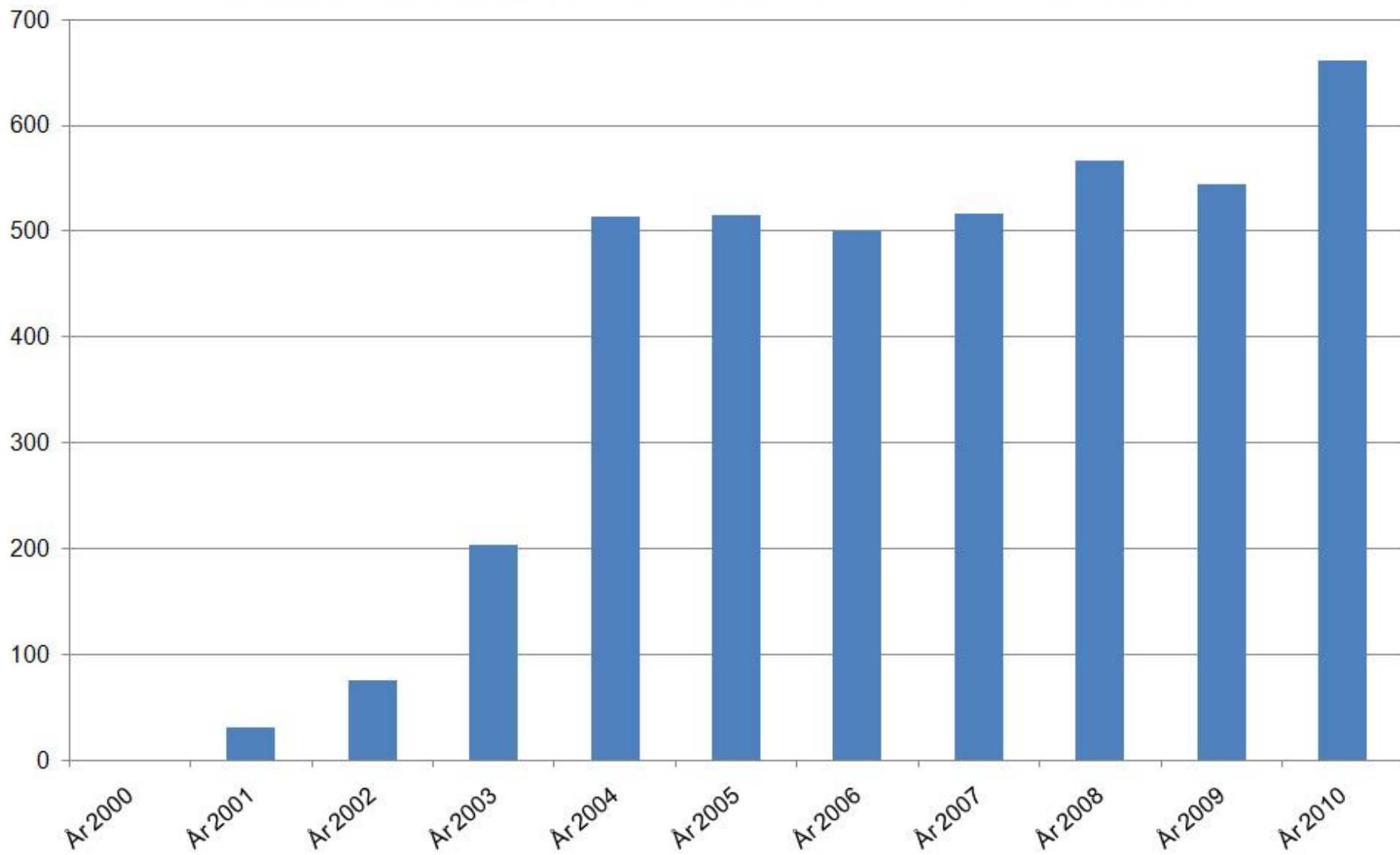


# Lunds universitetssjukhus - Antal patienter/år 2000-01-01- 2010-12-31.

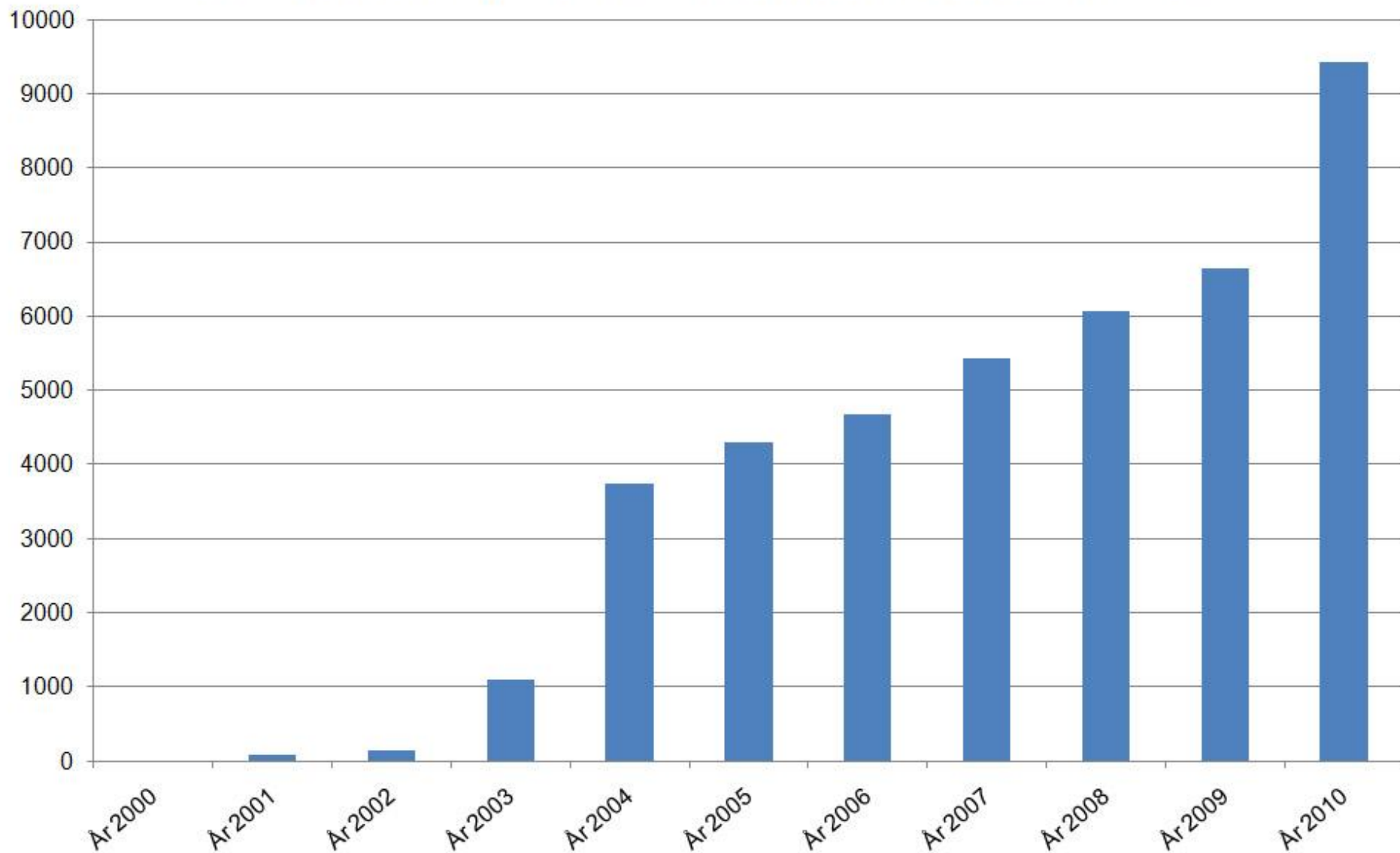
N= 5667



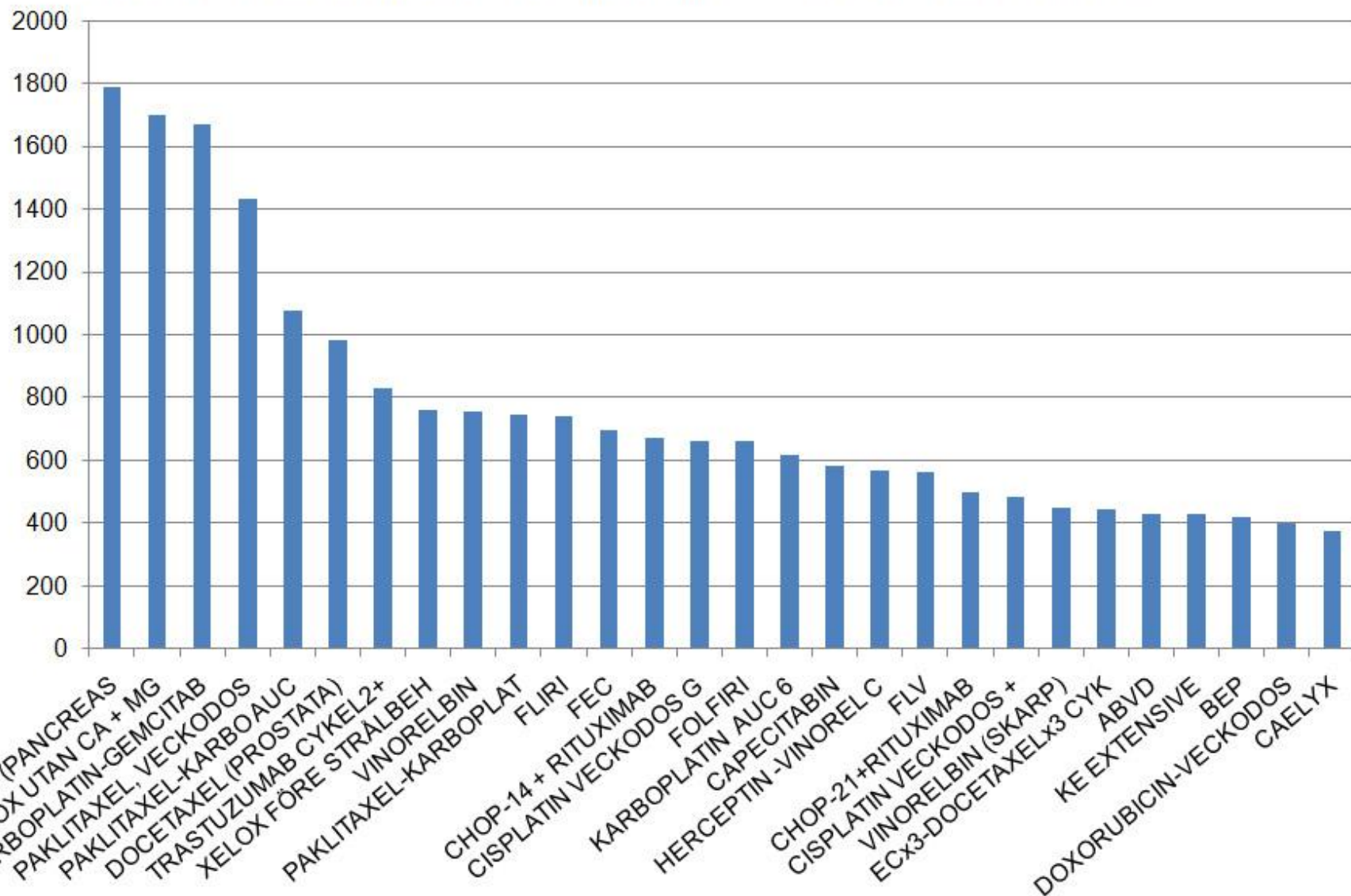
# Lunds universitetssjukhus - Lymfom/år 2000-01-01- 2010-12-31.



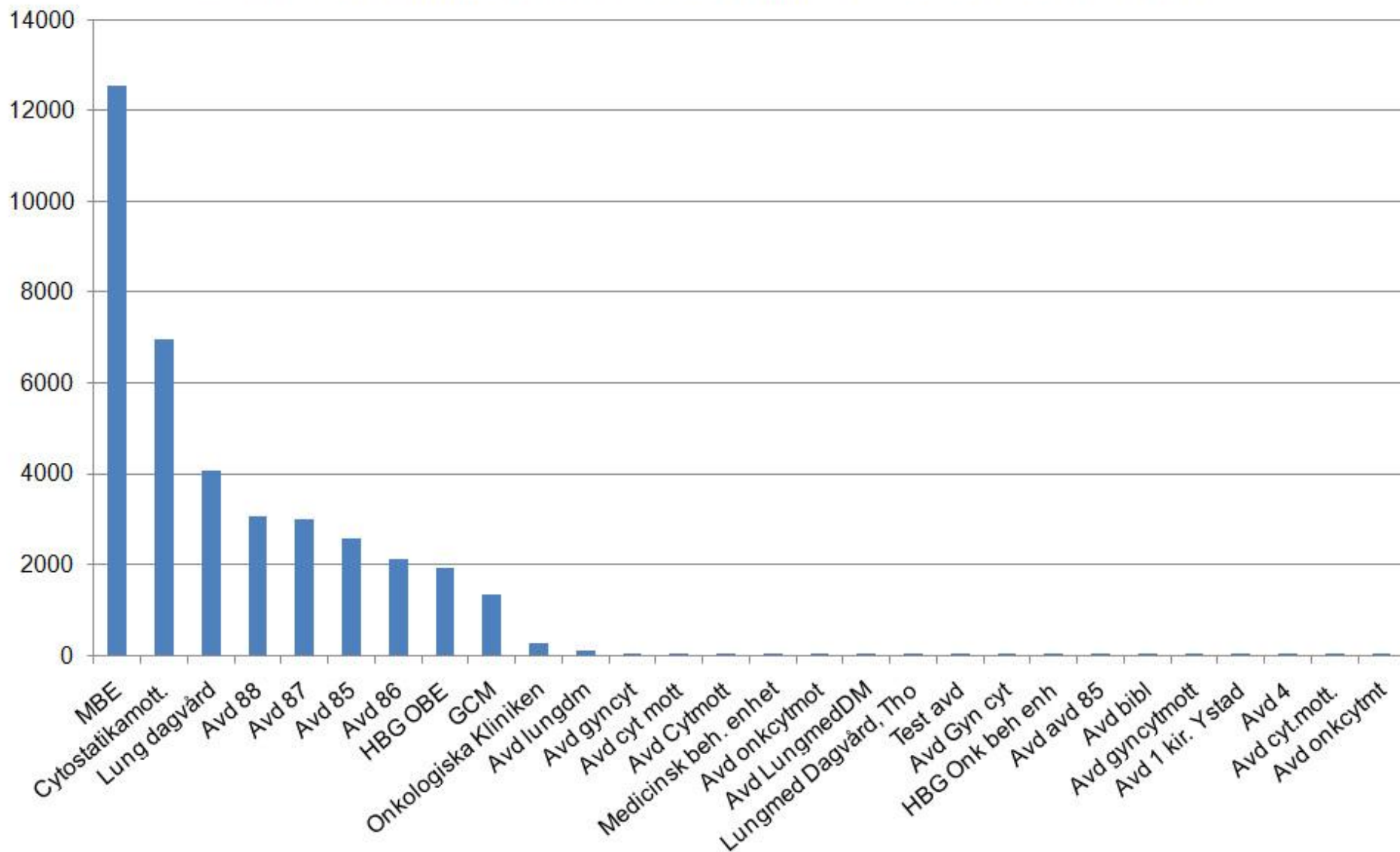
# Lunds universitetssjukhus - Ordinationer/år 2000-01-01- 2010-12-31.



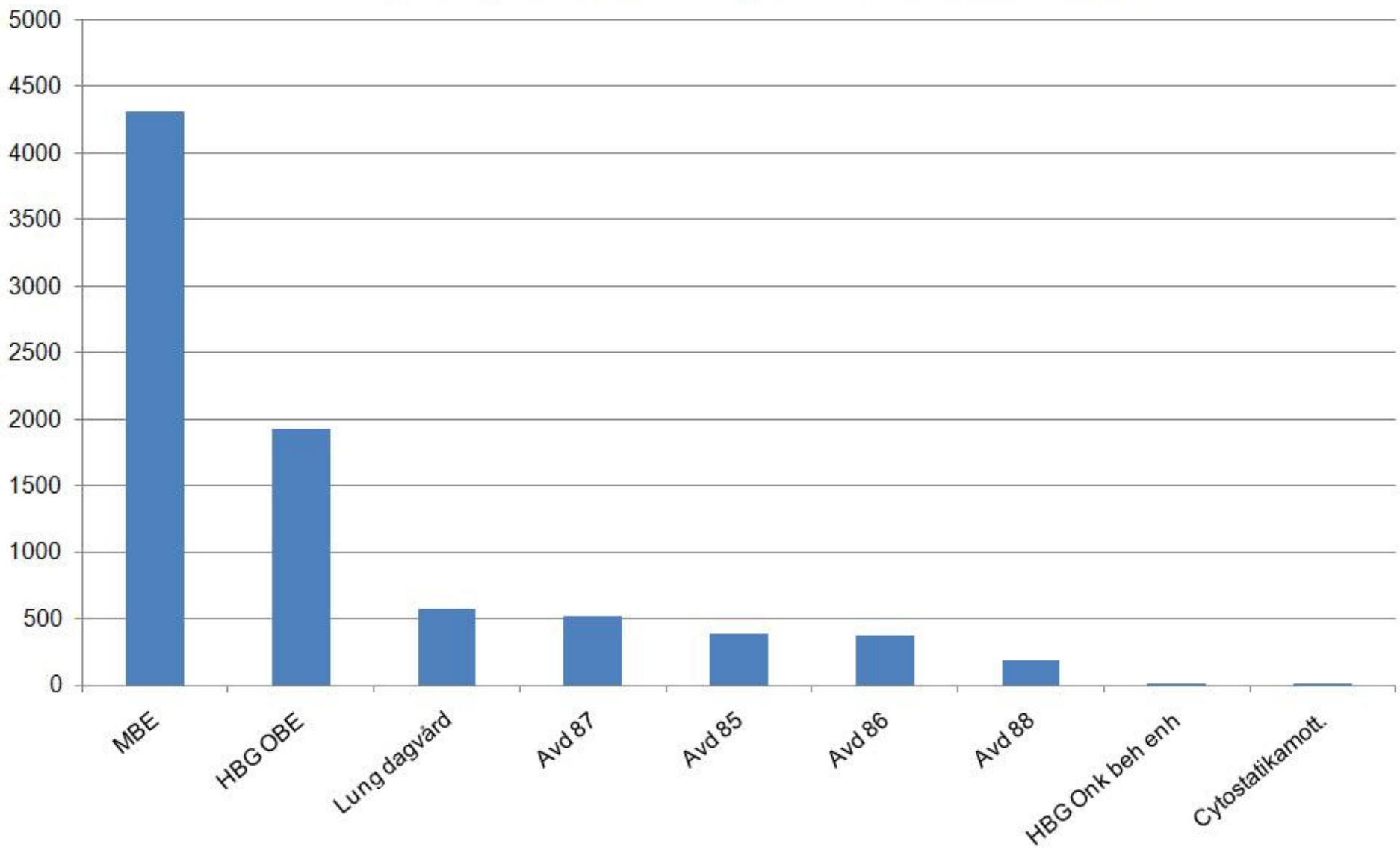
# Lunds universitetssjukhus - Vanliga regimer 2000-01-01- 2010-12-31.



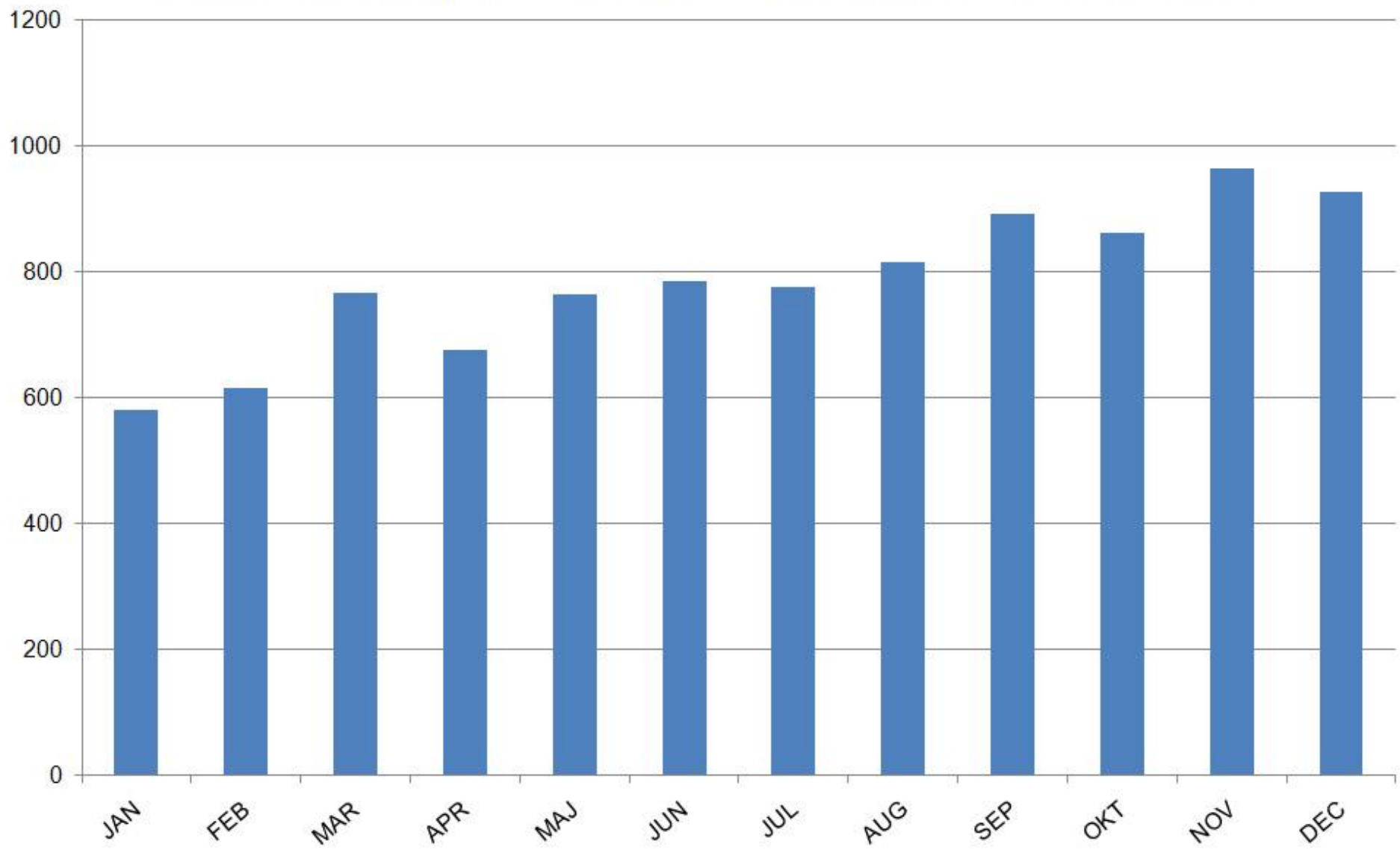
# Lunds - Avdelningar som fått beredningar 2000-01-01- 2010-12-31.



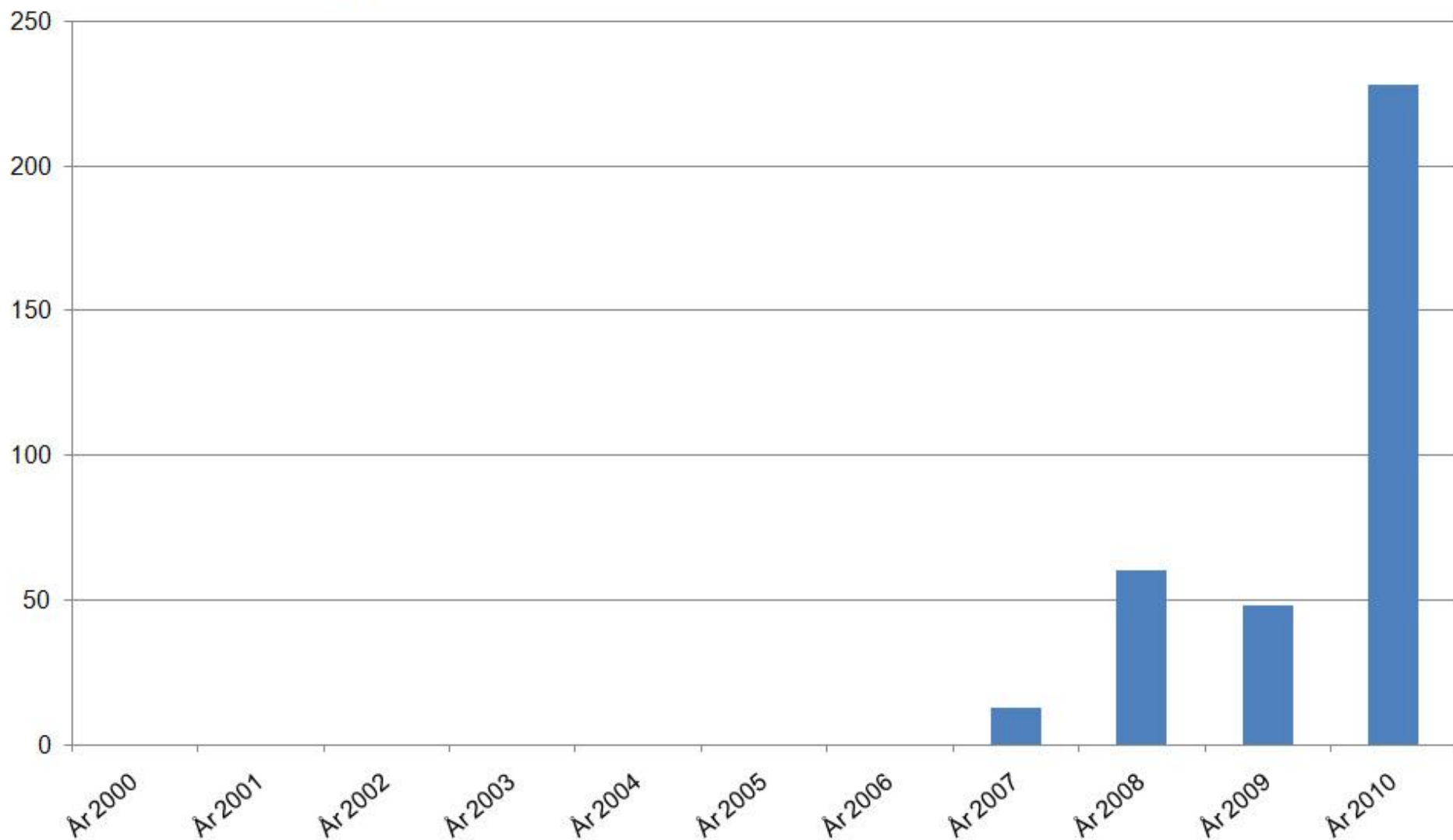
### Lunds - Avdelningar fått beredningar 2010-01-01- 2010-12-31.



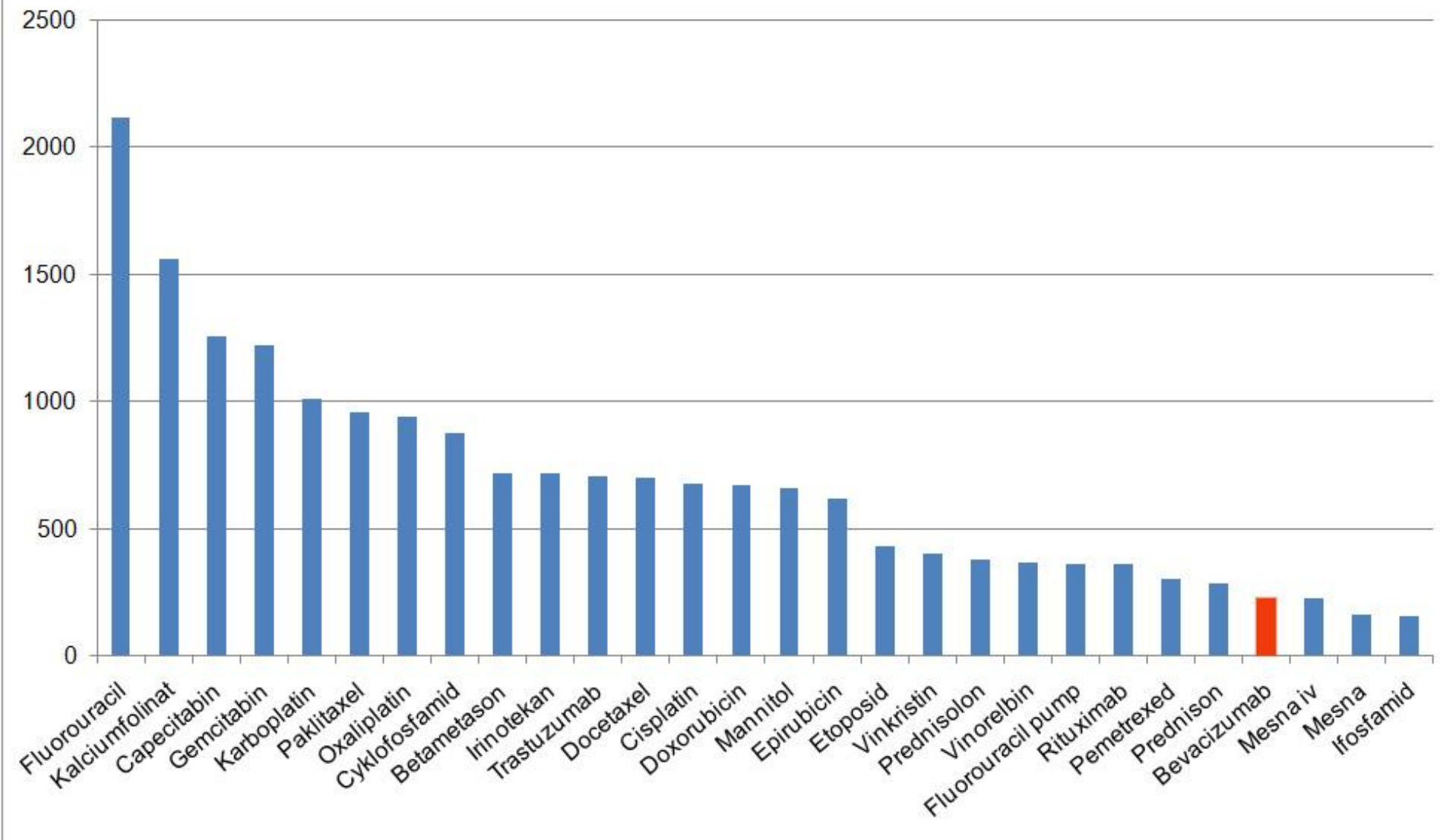
Lunds universitetssjukhus - Antal patienter/mån 2010-01-01- 2010-12-31.



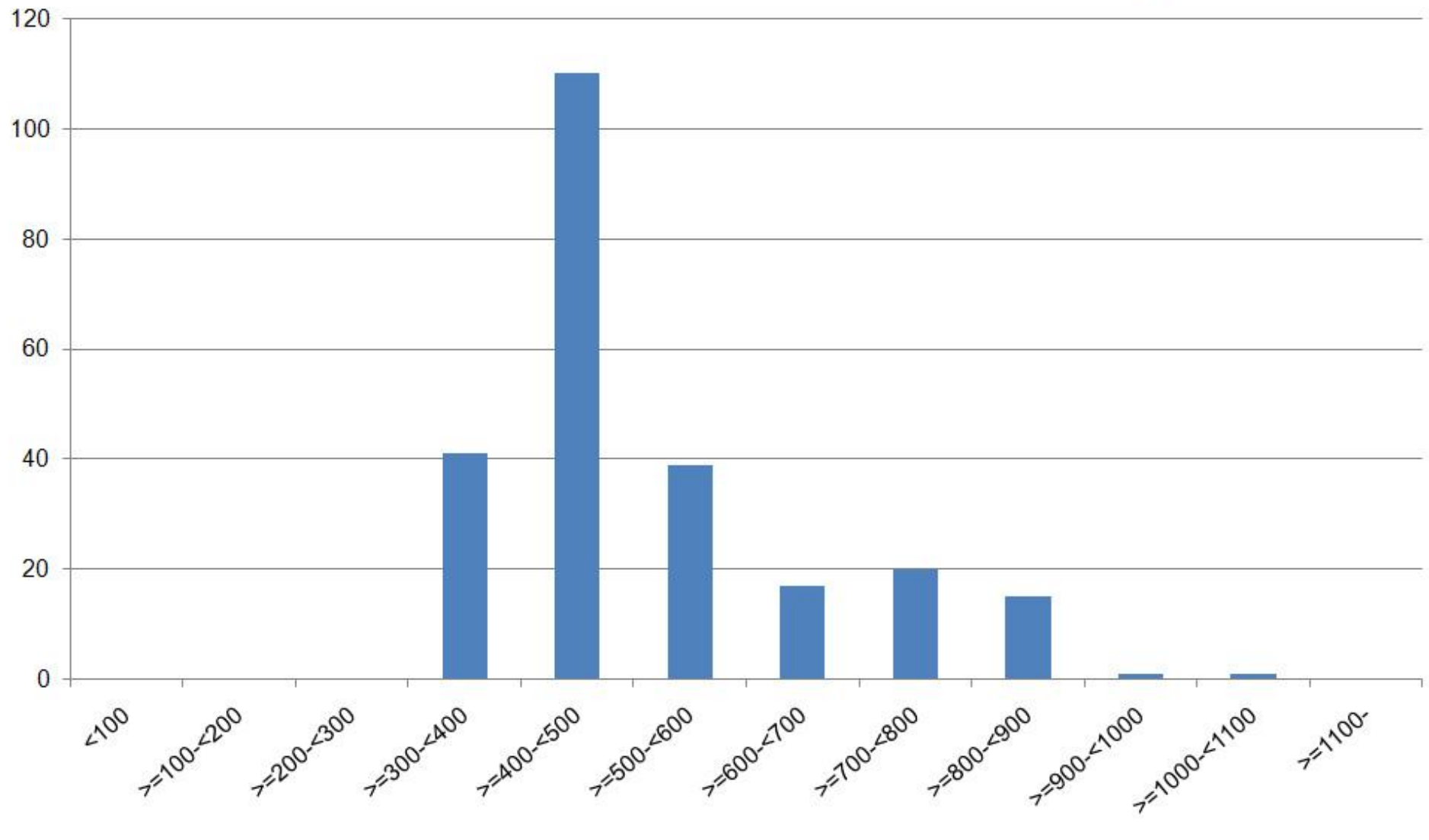
**Lunds universitetssjukhus - Ordinationer bevacizumab/år  
i Cyto-Base 2000-01-01- 2010-12-31. N= 349**



Lunds universitetssjukhus - Vanliga läkemedel som ordinerats  
2010-01-01- 2010-12-31. N= 1620



**Lunds universitetssjukhus - Dos Bevacizumab 2010-01-01- 2010-12-31.**  
**Median = 400.00 M = 466.80 Std = 146.30 N= 244 behandlingar**



**Lunds universitetssjukhus - Ordinationer/år  
av gemcitabin i Cyto-Base 2000-01-01- 2010-12-31.**

