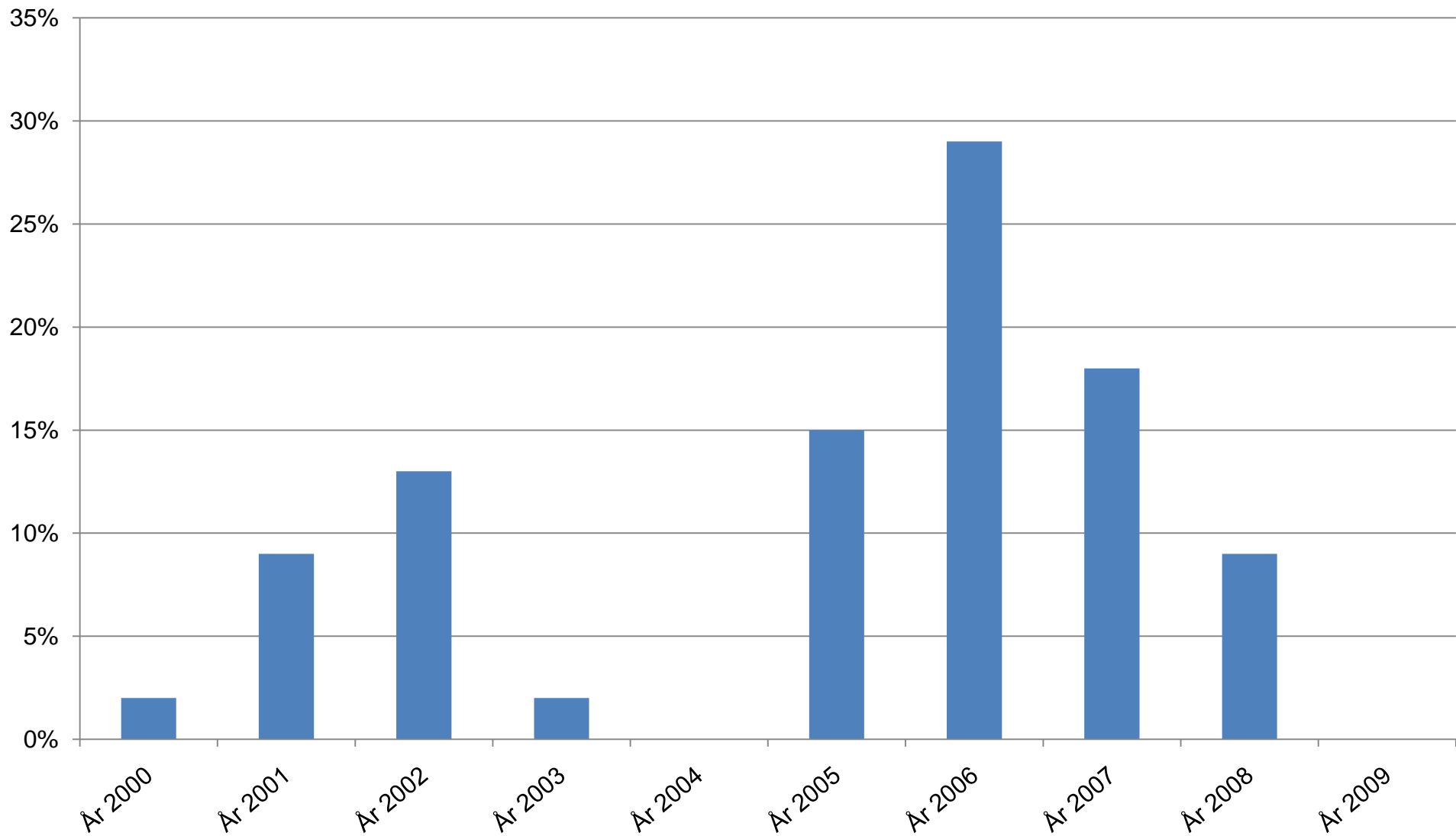
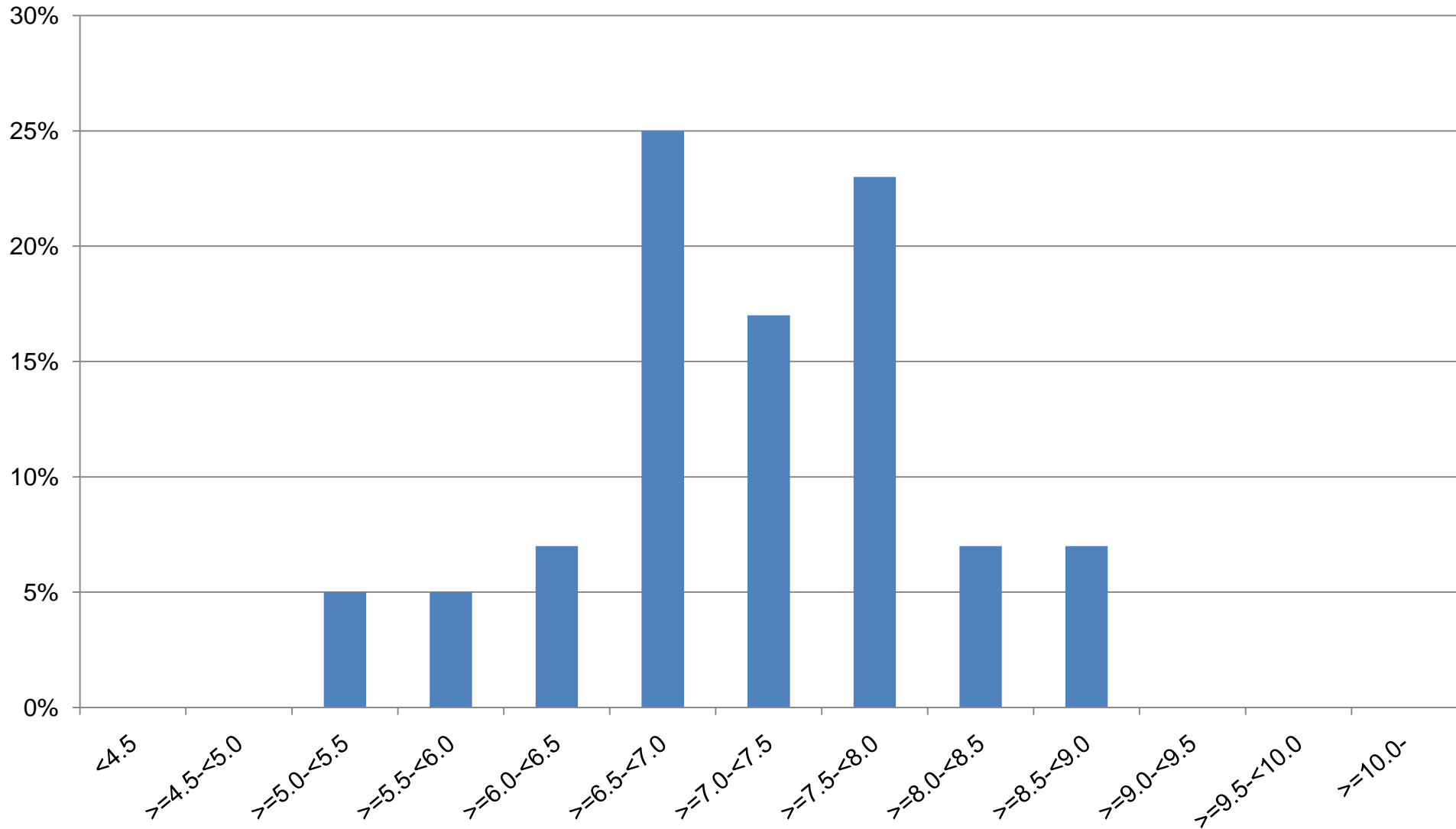


Skene lasarett Pumpstart/år 2000-01-01- 2009-12-31.

N= 44 / P= 412

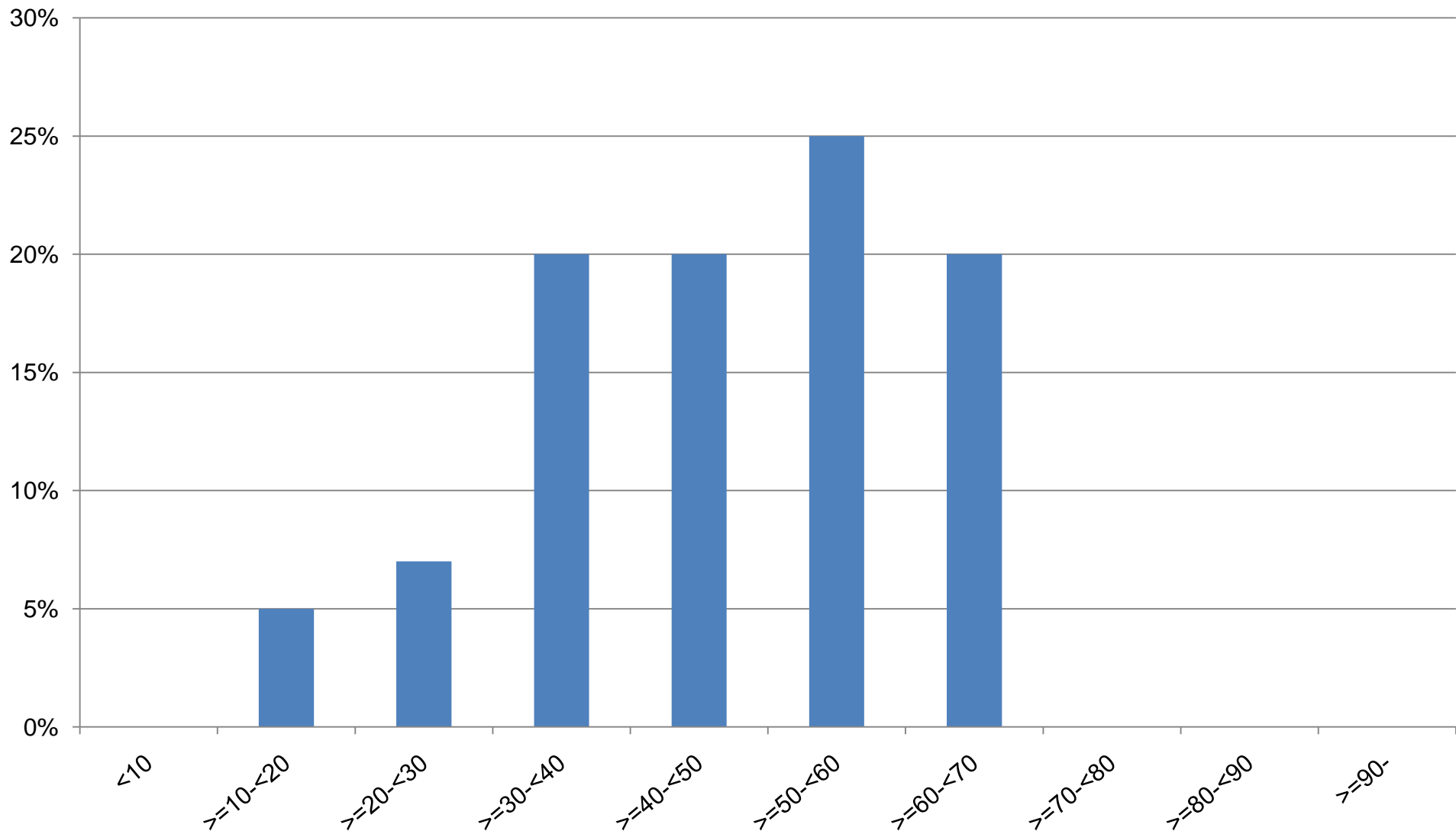


Skene lasarett HbA1c vid CSII typ 1. 2009-01-01- 2009-12-31.
Median = 7.10 M = 7.09 Std = 0.88 N= 39 / P= 161 (24%)

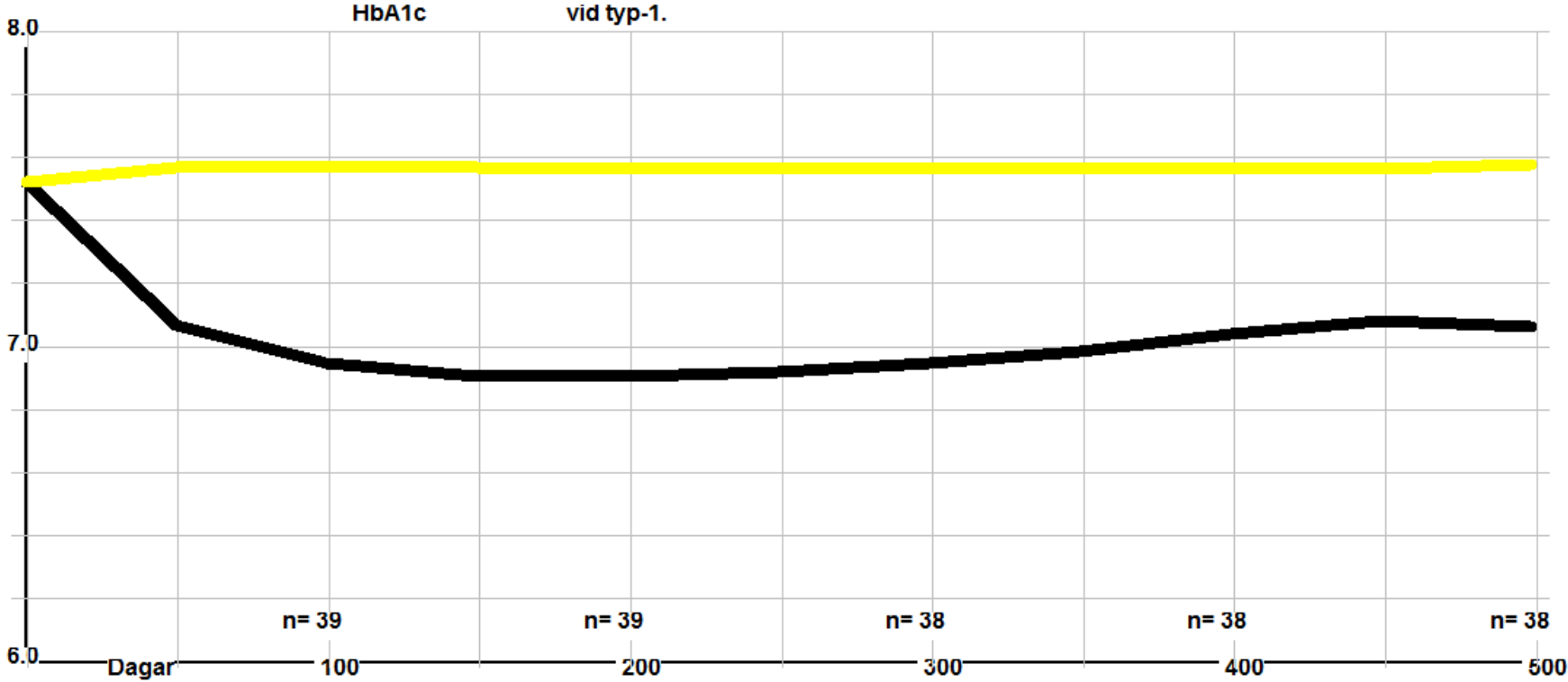


Skene lasarett Ålder vid CSII 2009-01-01- 2009-12-31.

Median = 49.00 M = 46.85 Std = 13.59 N= 39 / P= 161 (24%)

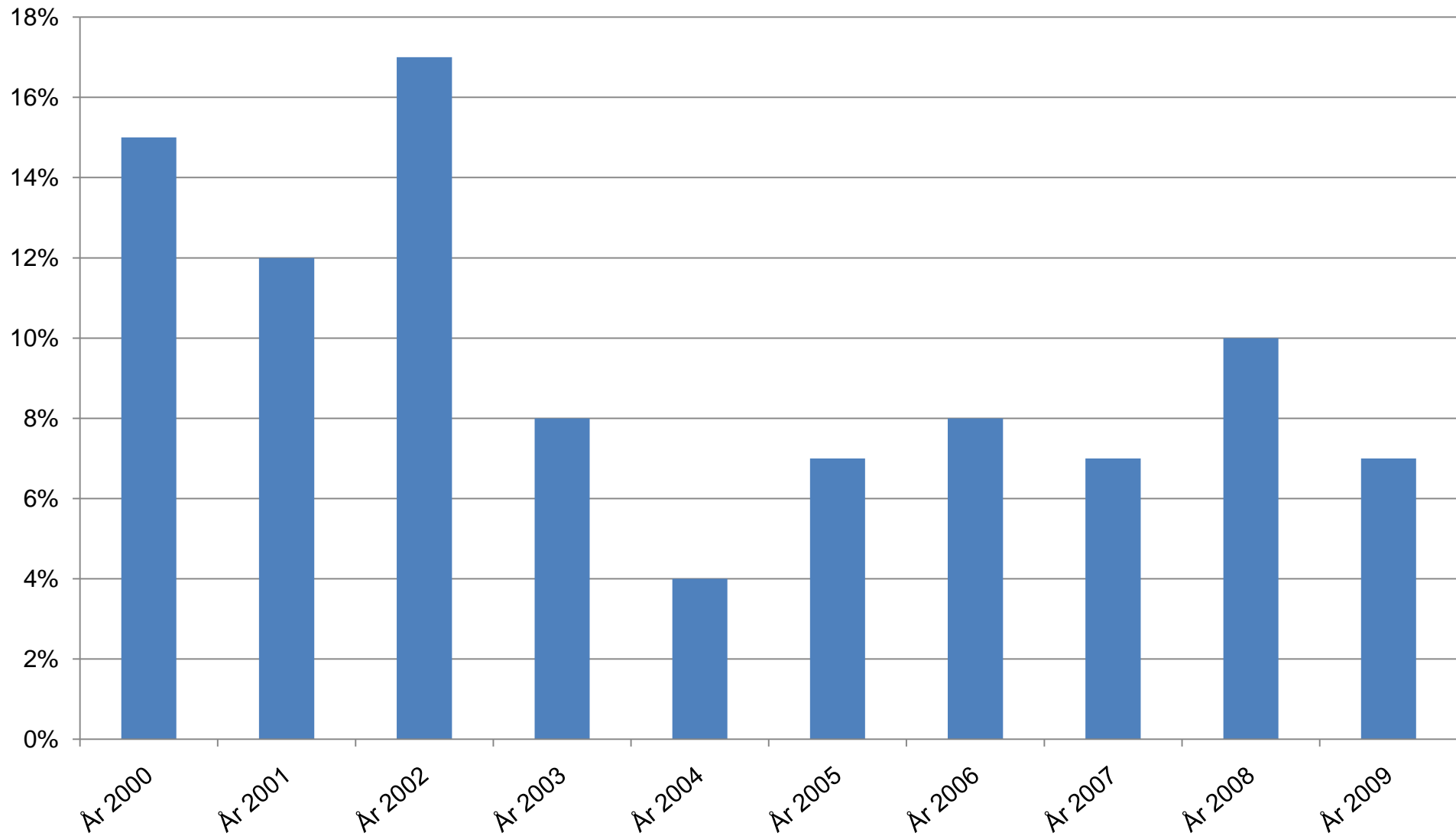


Skene – pump vid typ 1

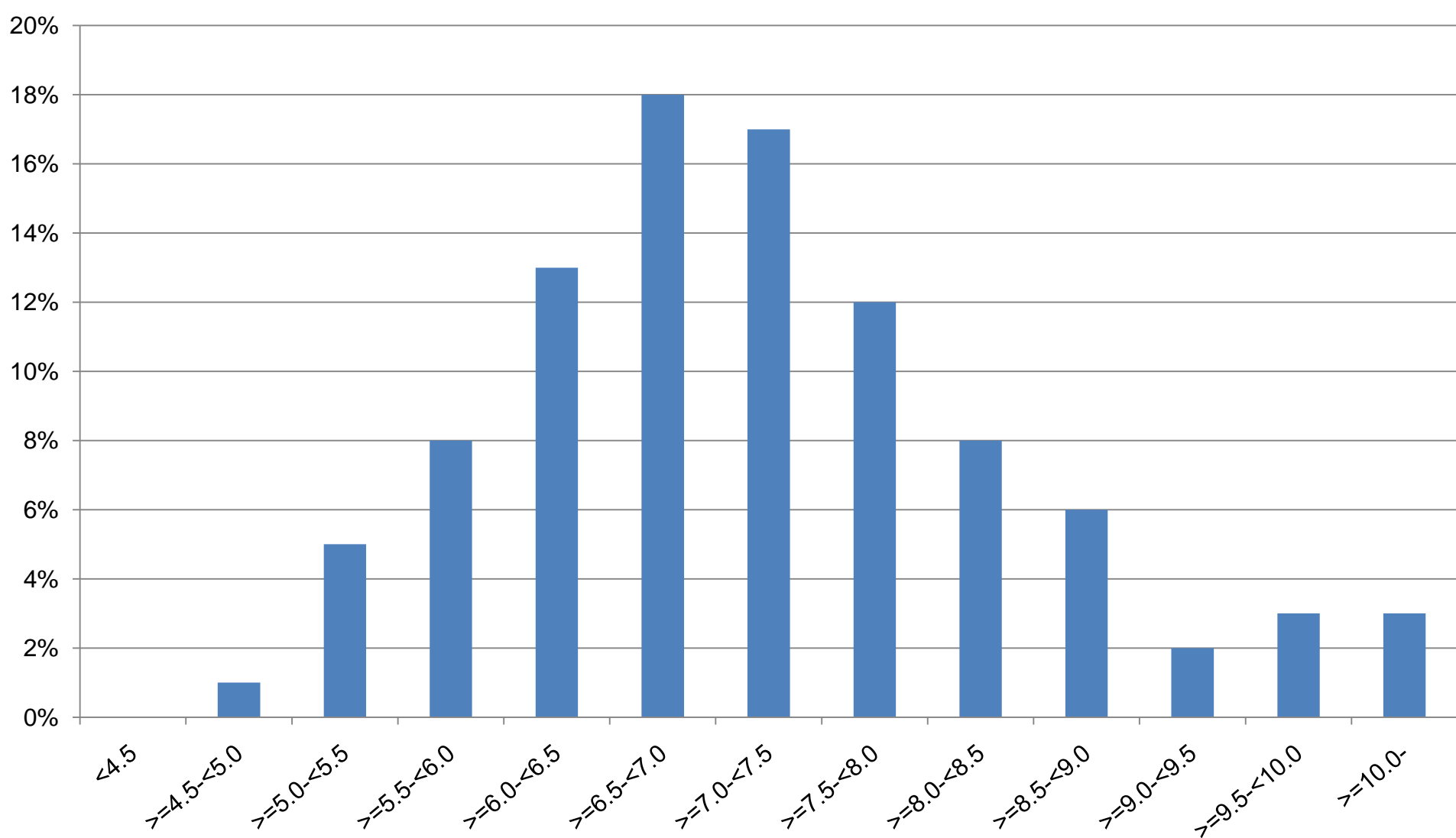


Sahlgrenska.Pumpstart/år 2000-01-01- 2009-12-31.

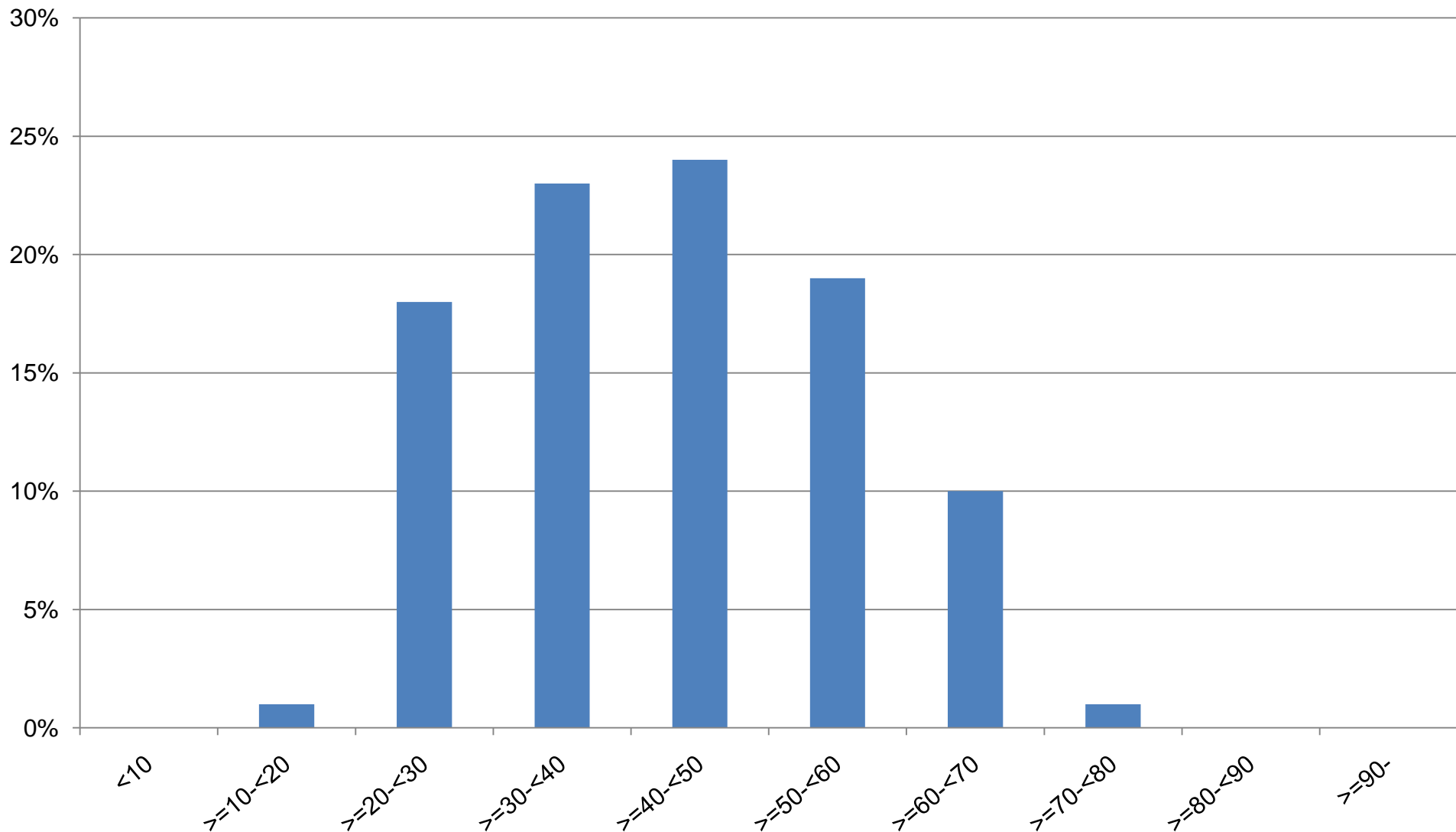
N= 256 / P= 1698



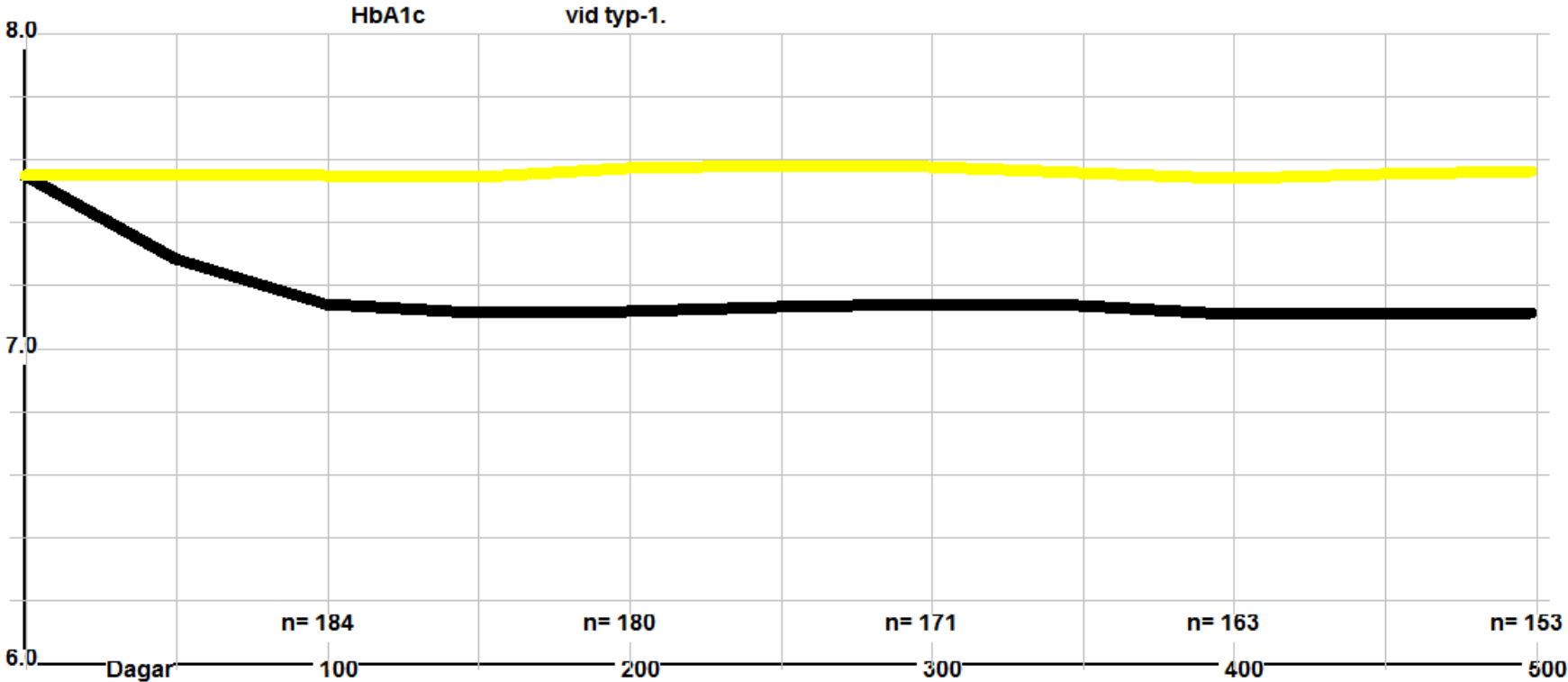
Sahlgrenska HbA1c vid CSII typ 1 2009-01-01- 2009-12-31.
Median = 7.00 M = 7.21 Std = 1.40 N= 247 / P= 1360 (18.2%)



Sahlgrenska. Ålder vid CSII typ 1 2009-01-01- 2009-12-31.
Median = 41.00 M = 42.15 Std = 13.51 N= 248 / P= 1360 (18.2%)

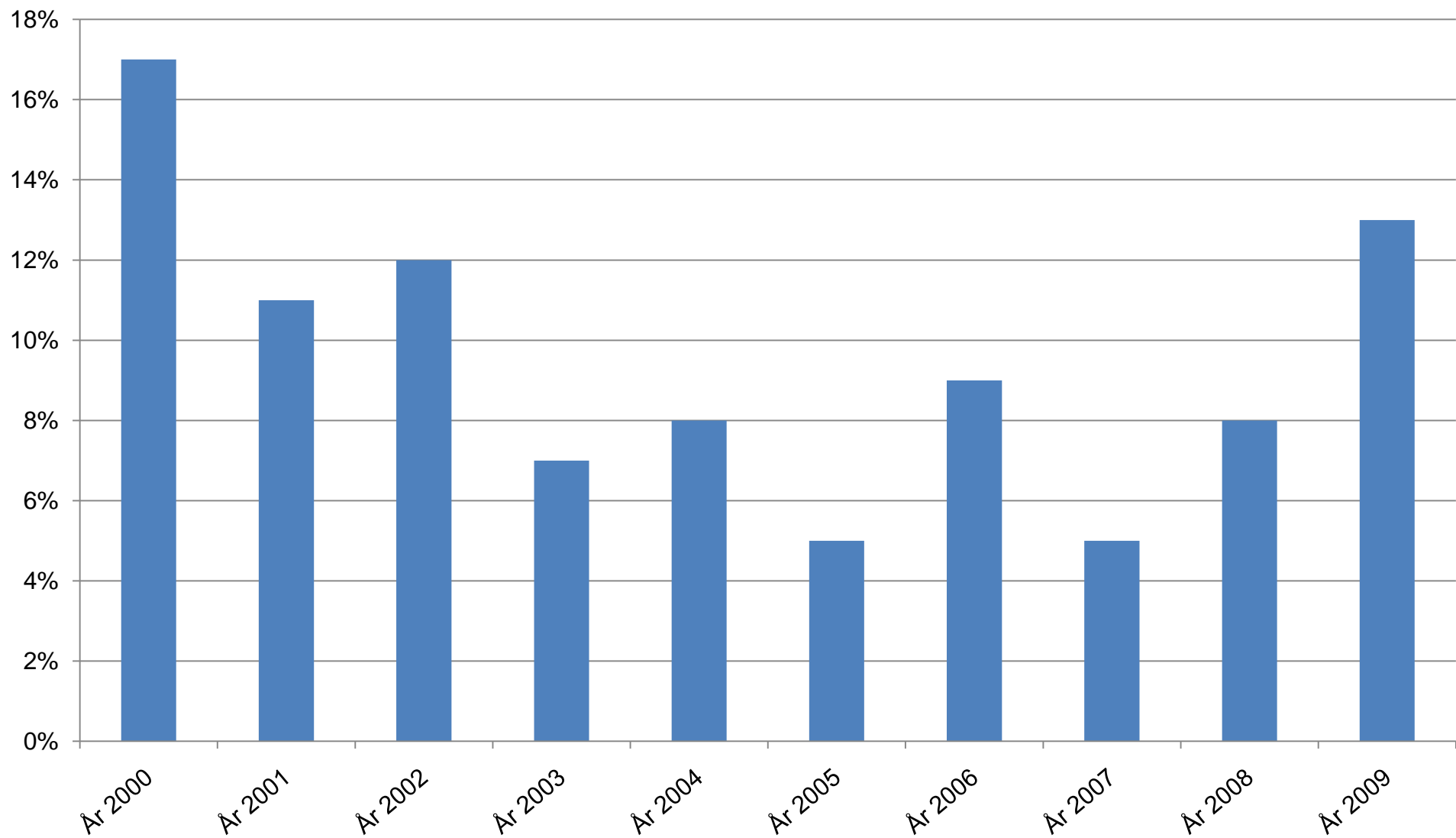


Sahlgrenska – pump typ 1

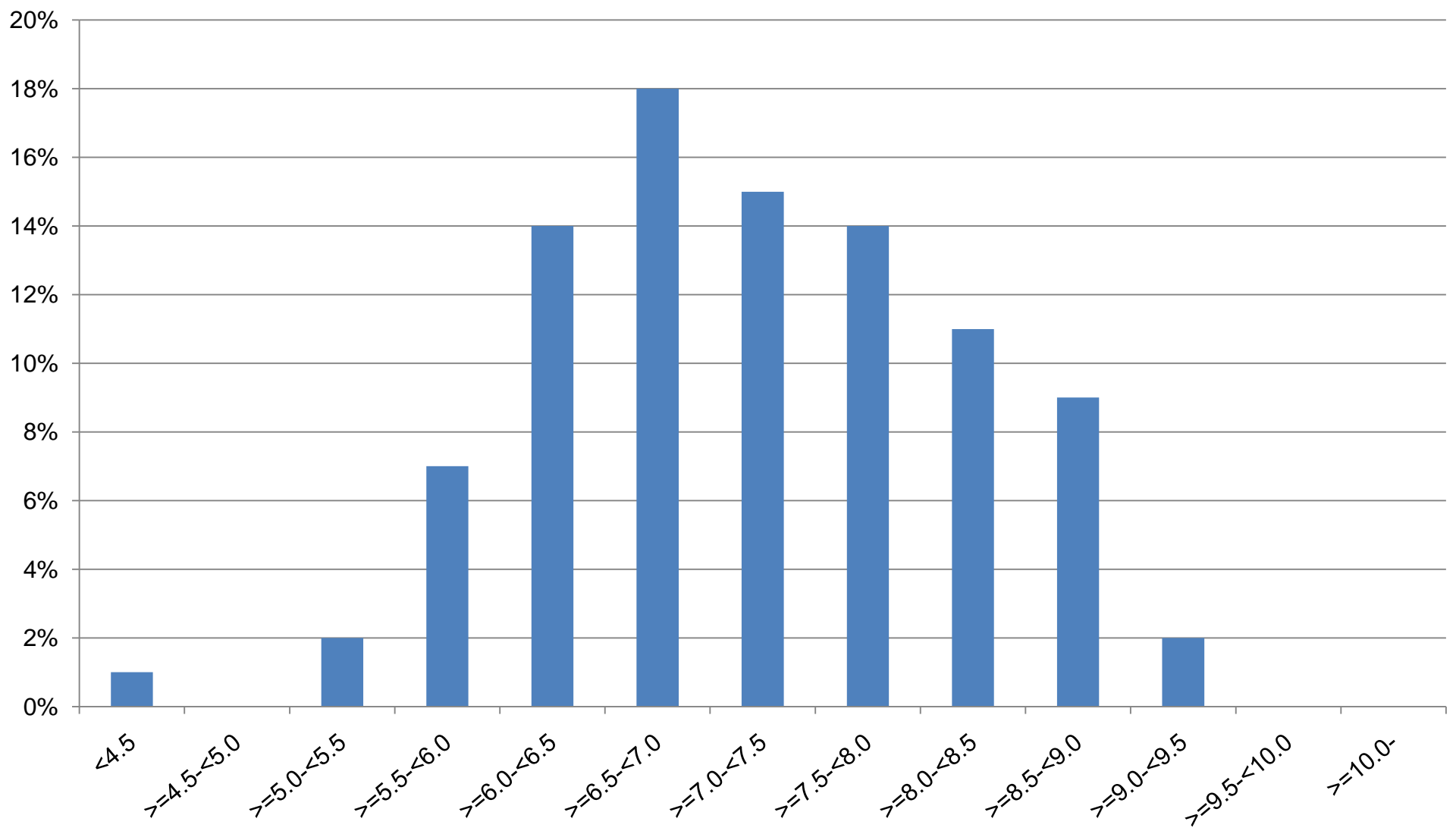


Falu lasarett Pumpstart/år 2000-01-01- 2009-12-31.

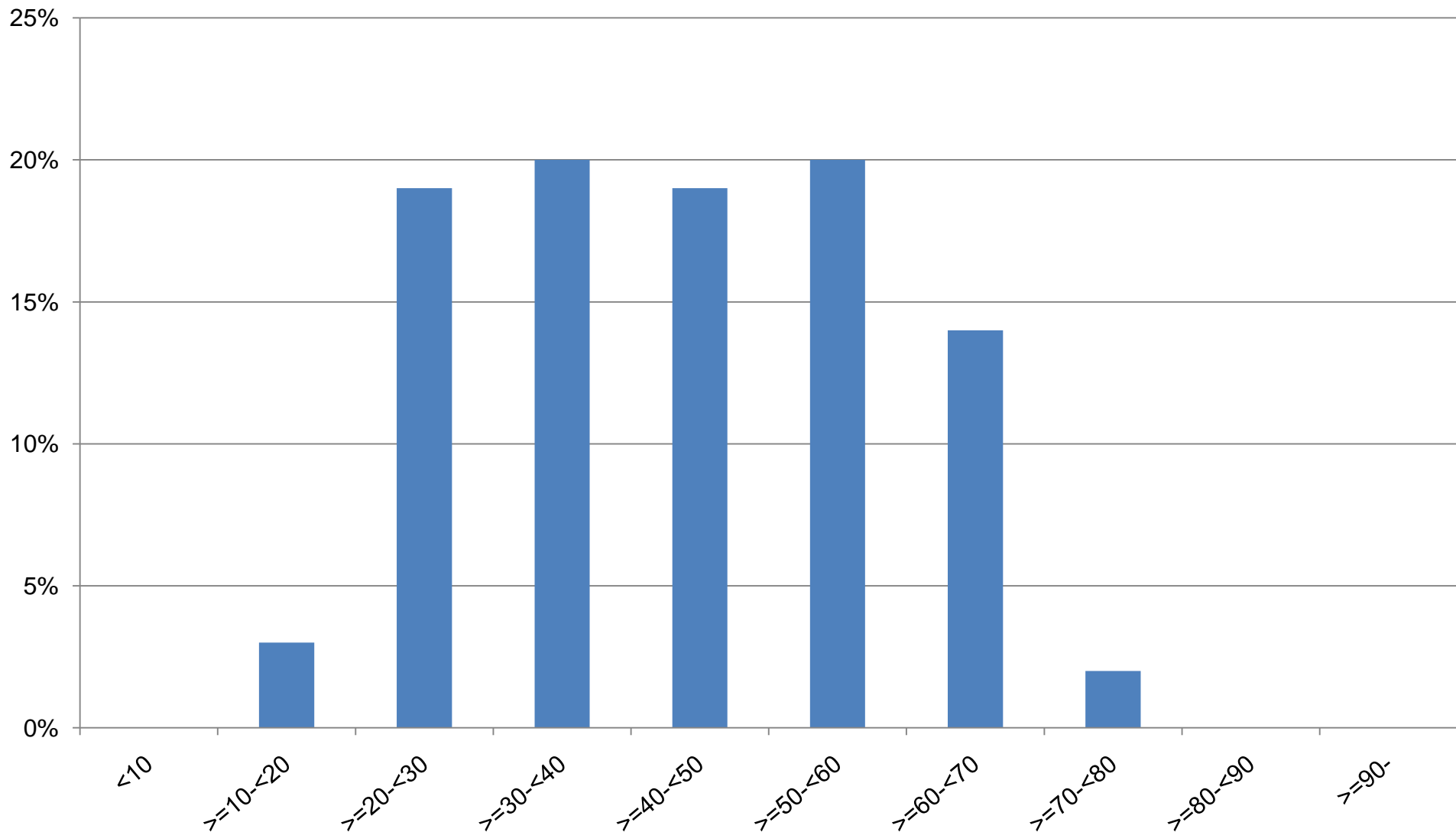
N= 119 / P= 980



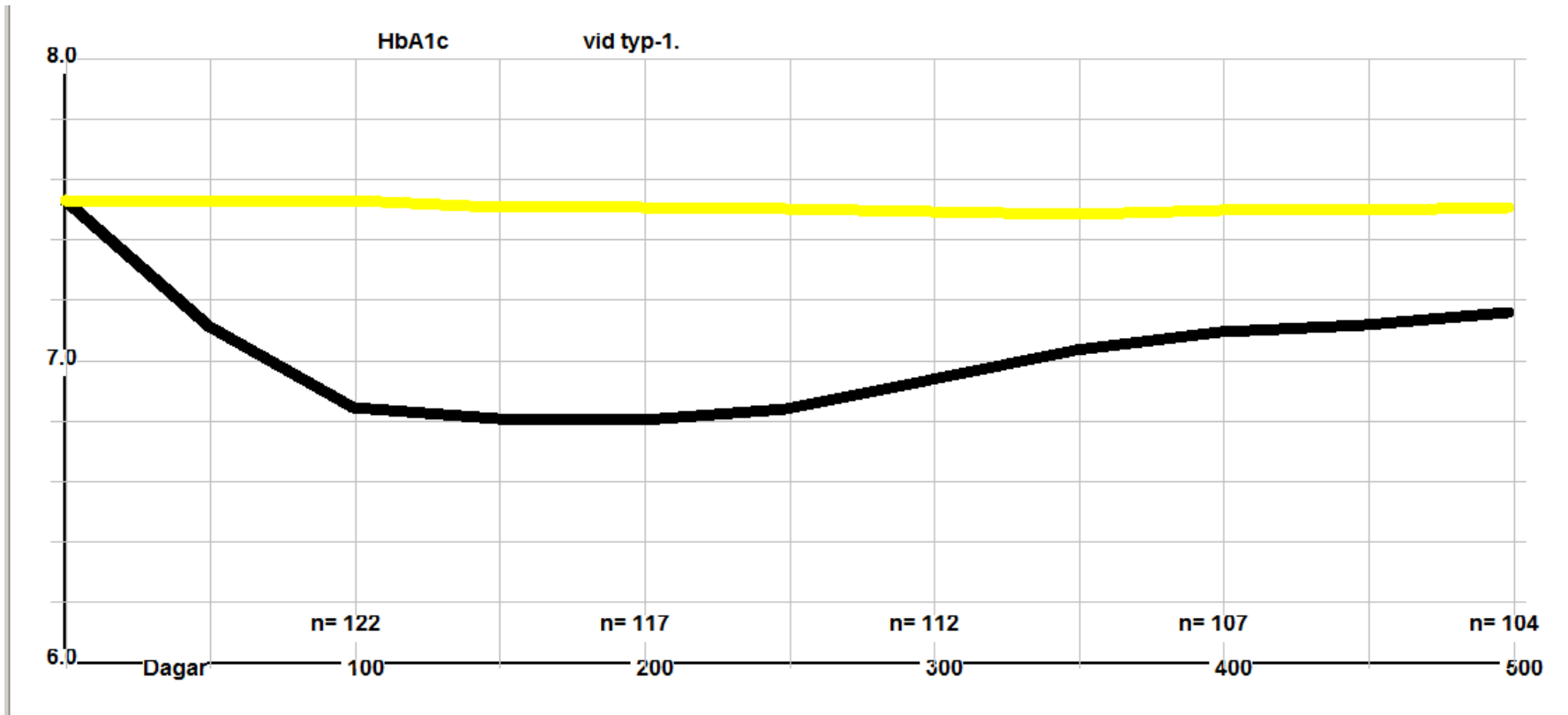
Falu lasarett HbA1c vid CSII typ 1. 2009-01-01- 2009-12-31.
Median = 7.10 M = 7.15 Std = 1.12 N= 127 / P= 719 (17.7%)



Falu lasarett. Ålder vid CSII typ 1. 2009-01-01- 2009-12-31.
Median = 43.00 M = 43.45 Std = 14.78 N= 127 / P= 719 (17.7%)

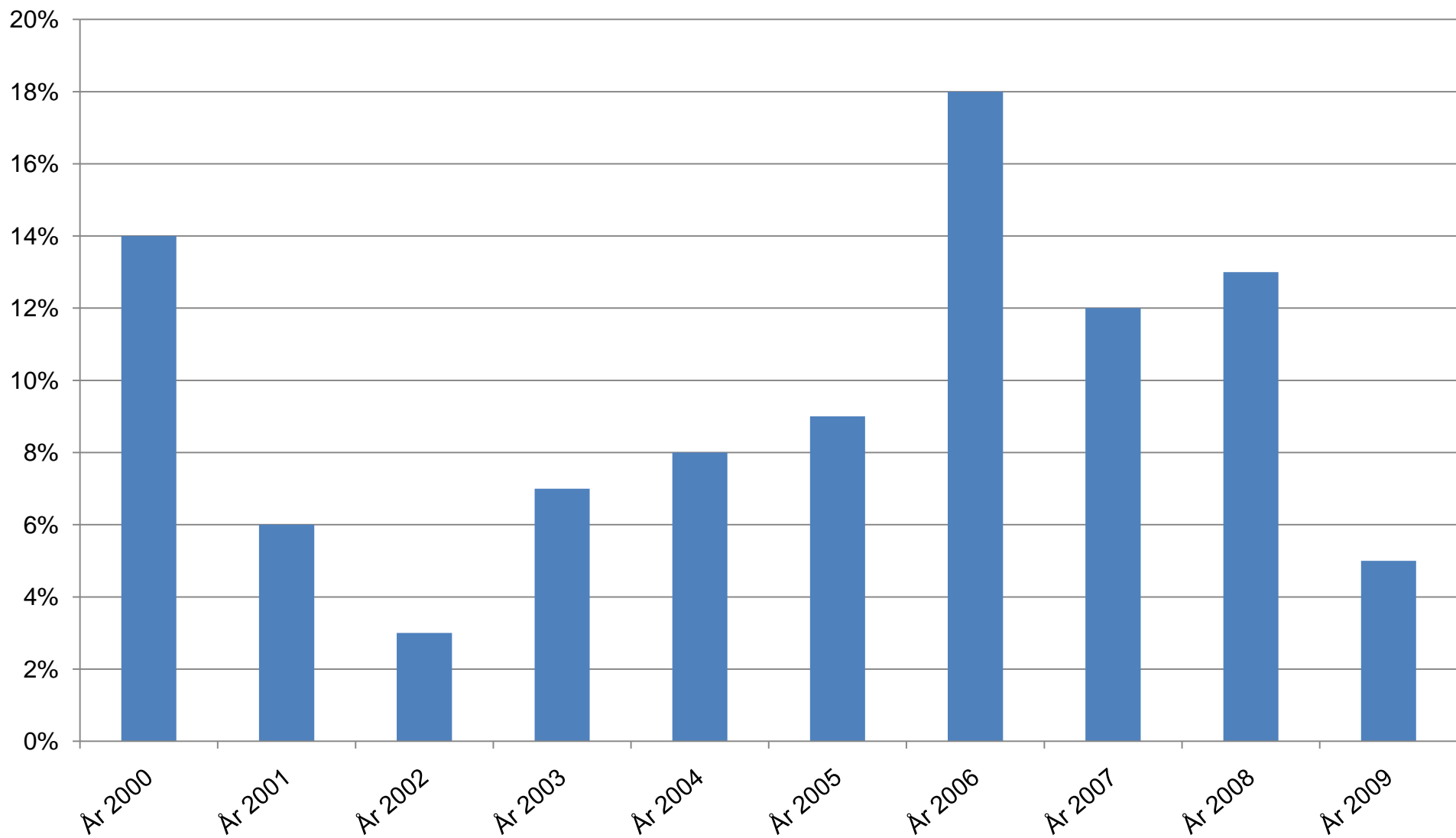


Falu lasarett - pump typ 1

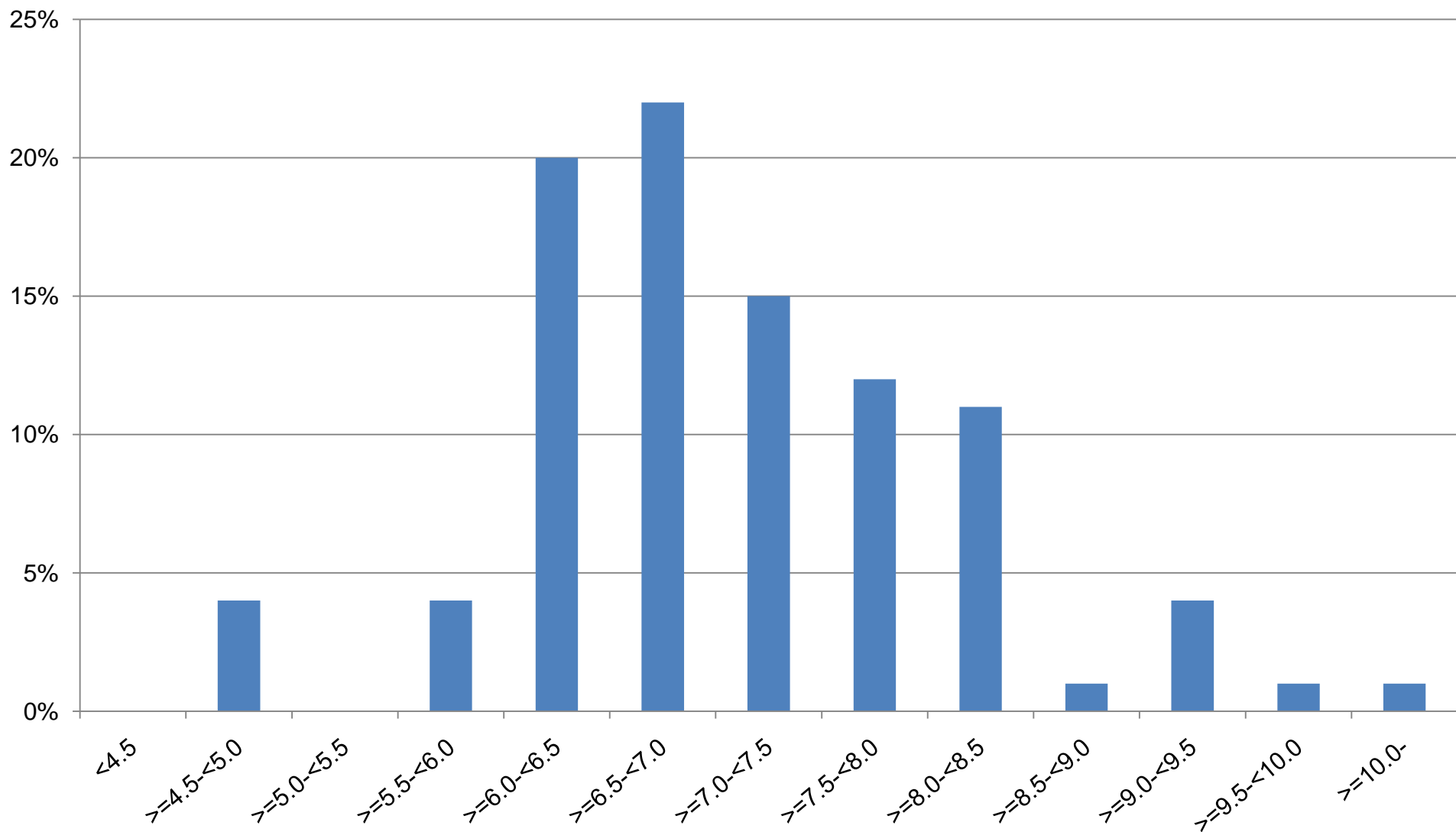


Kungälv sjukhus Pumpstart/år 2000-01-01- 2009-12-31.

N= 94 / P= 389

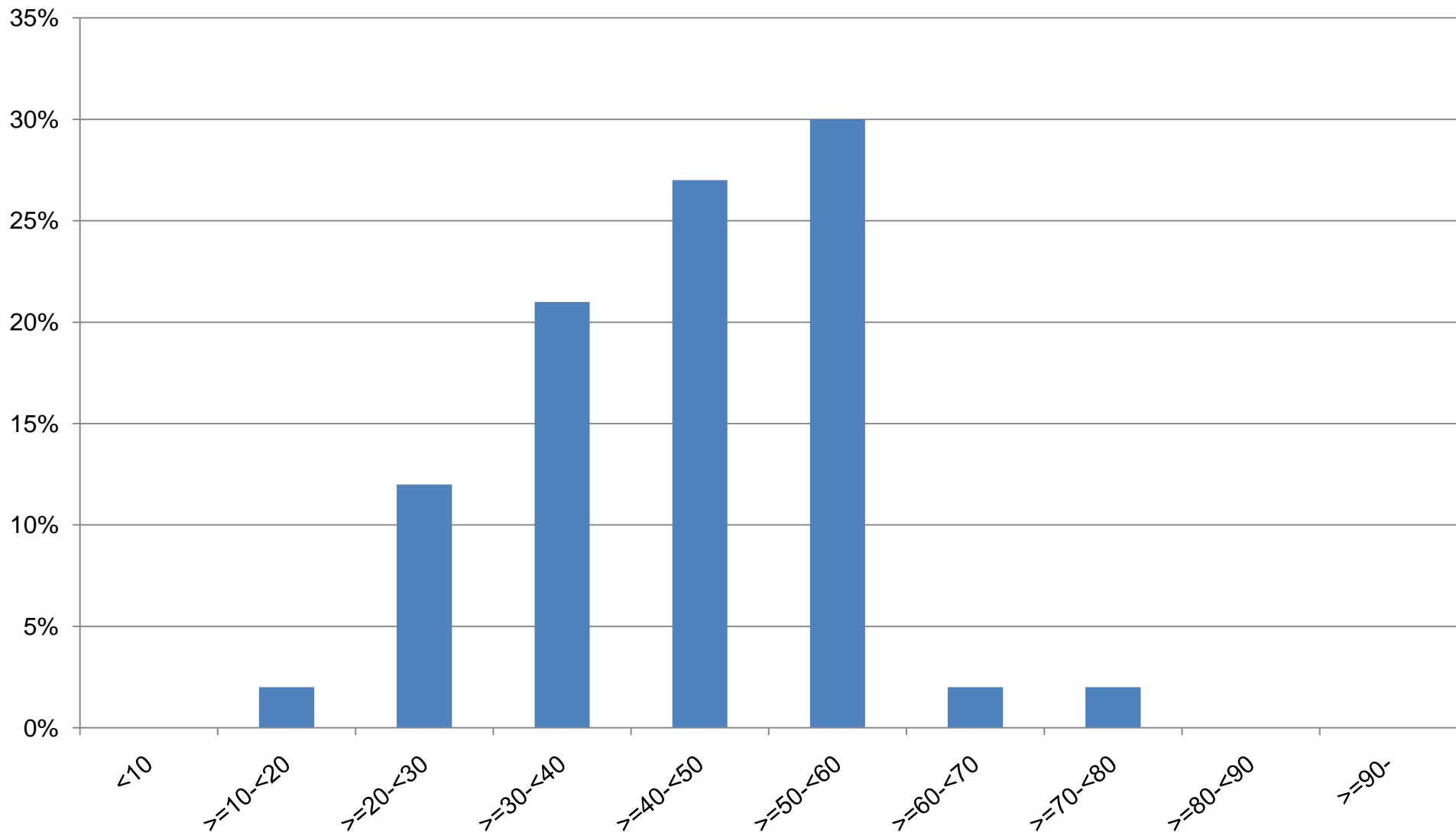


Kungälv sjukhus HbA1c vid CSII typ 1. 2009-01-01- 2009-12-31.
Median = 6.90 M = 7.08 Std = 1.08 N= 70 / P= 278 (25.2%)

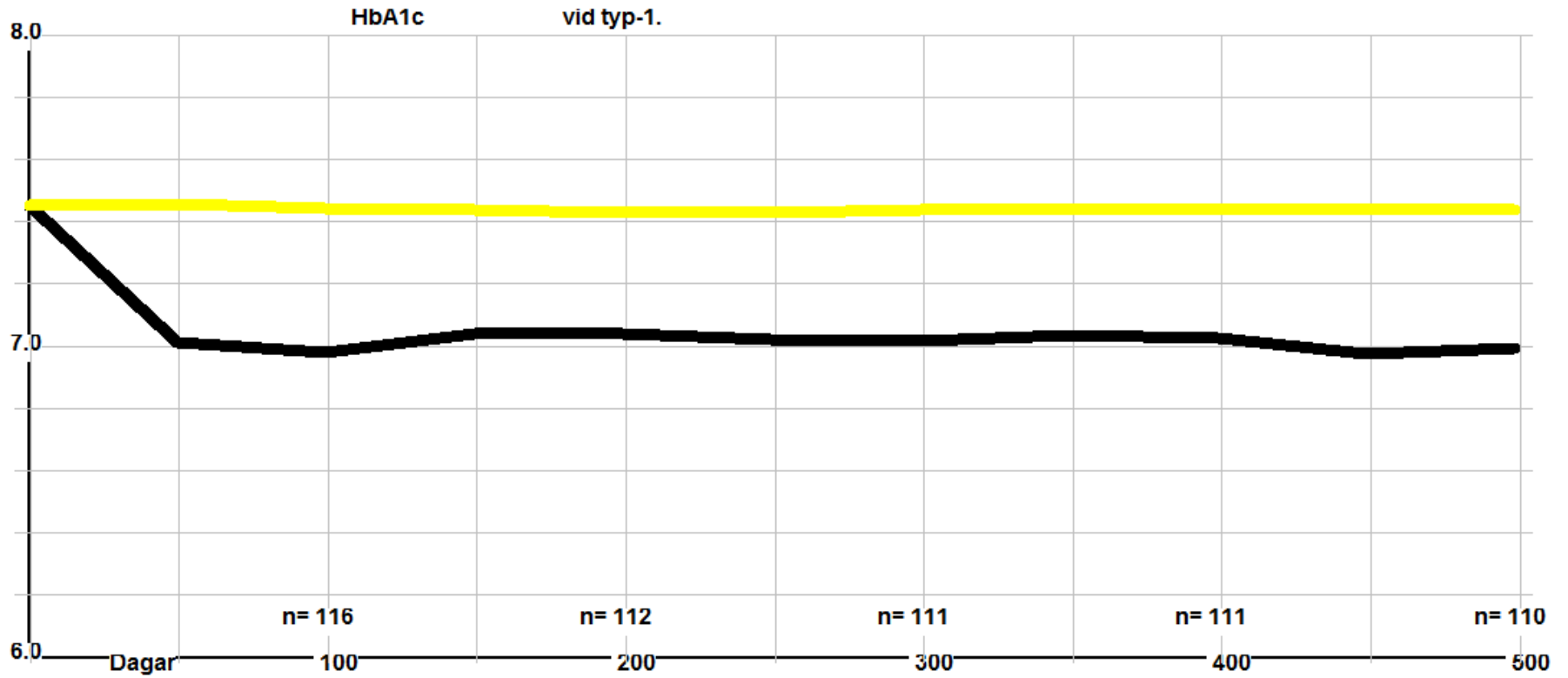


Kungälv sjukhus. Ålder vid CSII typ 1 2009-01-01- 2009-12-31.

Median = 43.50 M = 43.21 Std = 12.97 N= 70 / P= 278

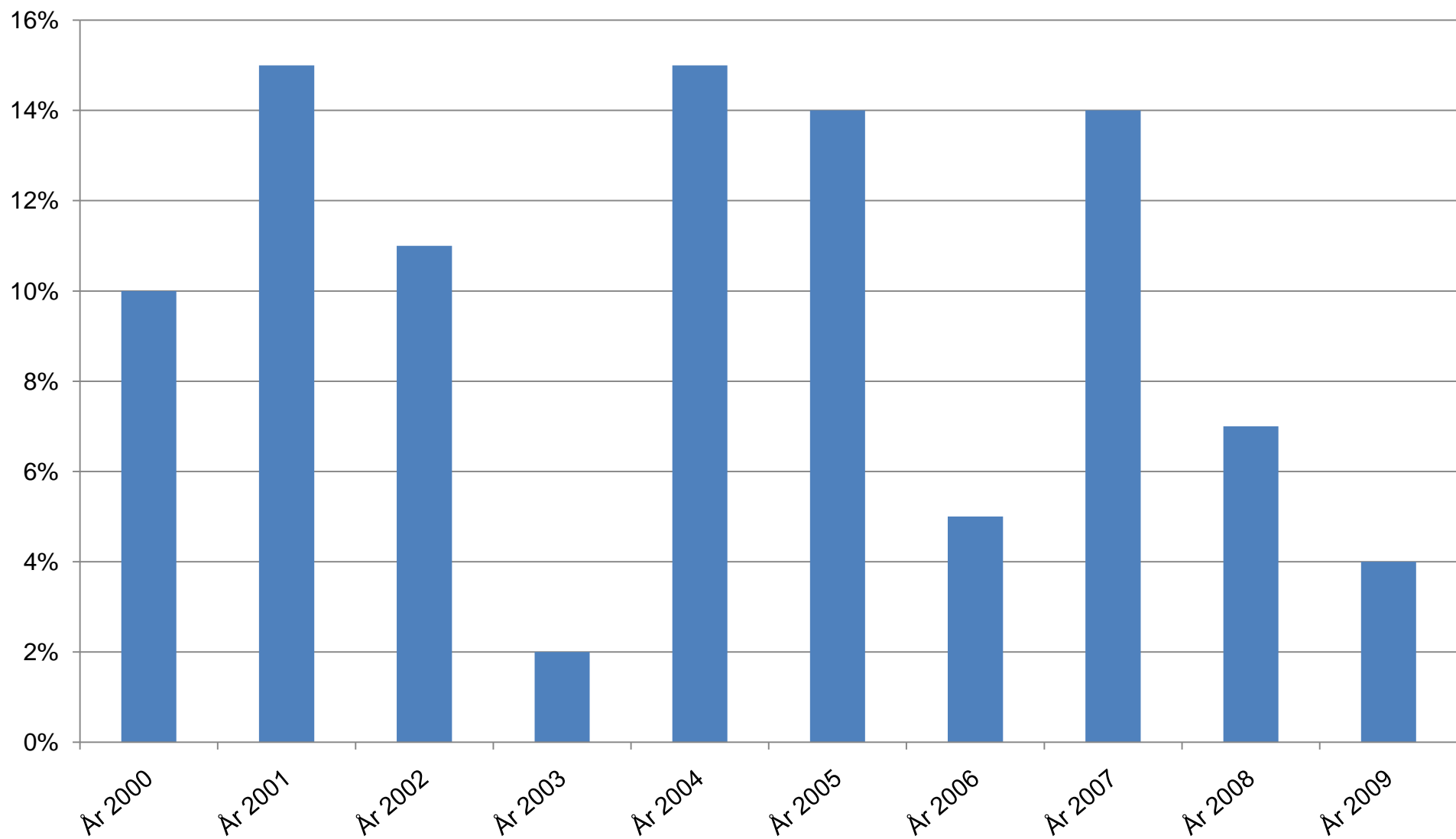


Kungälv's sjukhus – pump typ 1

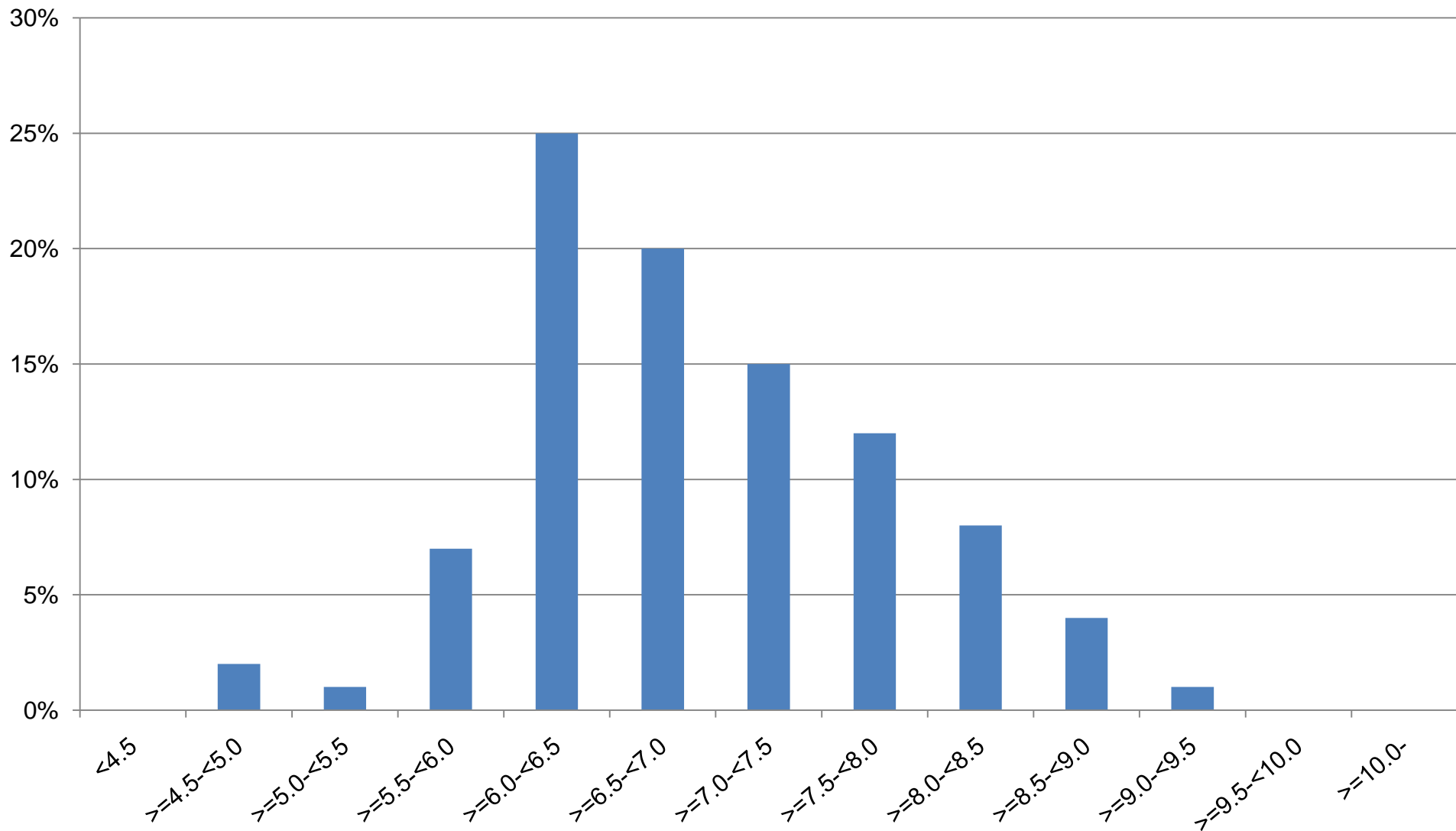


Uddevalla sjukhus Pumpstart/år 2000-01-01- 2009-12-31.

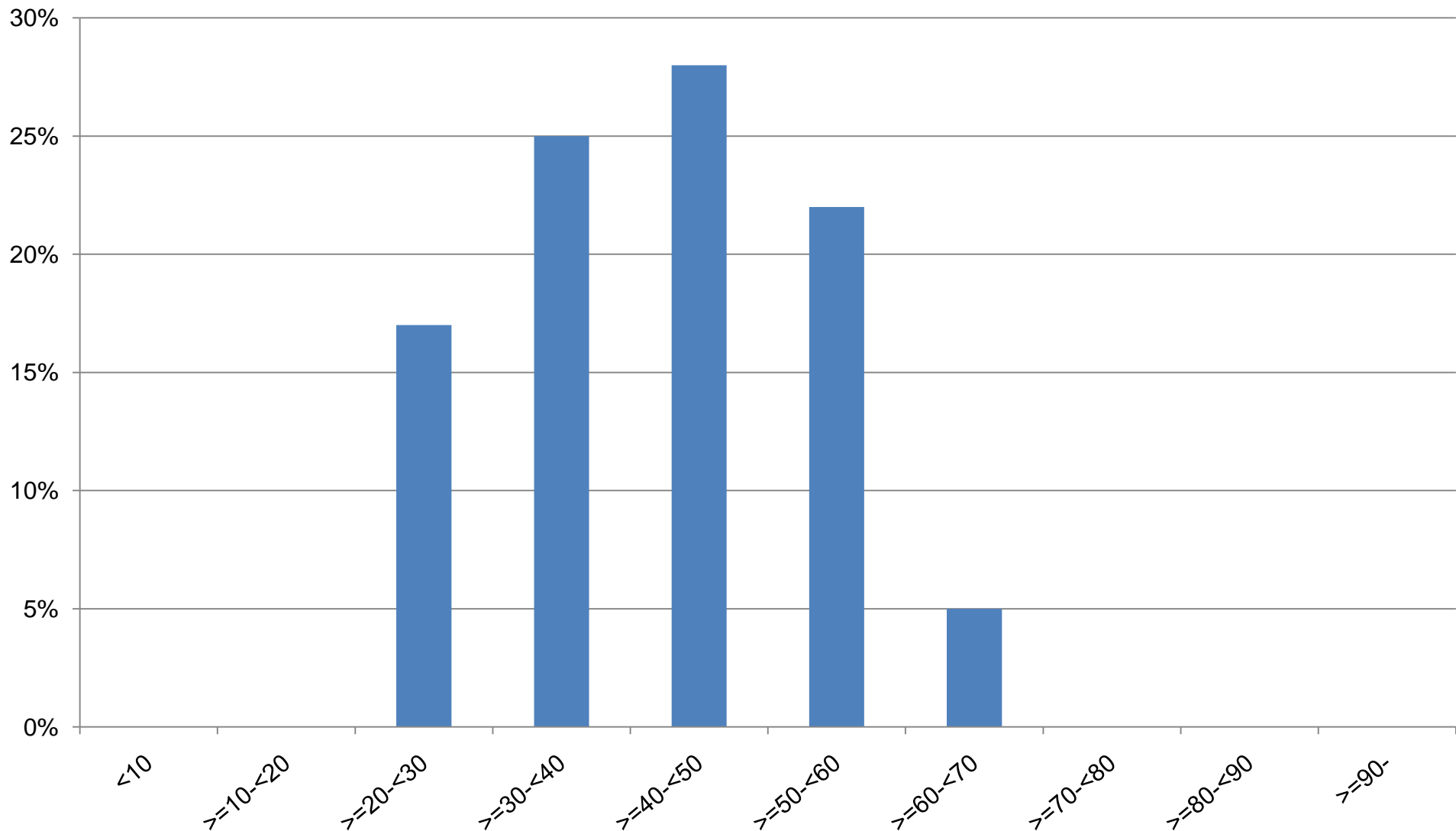
N= 86 / P= 510



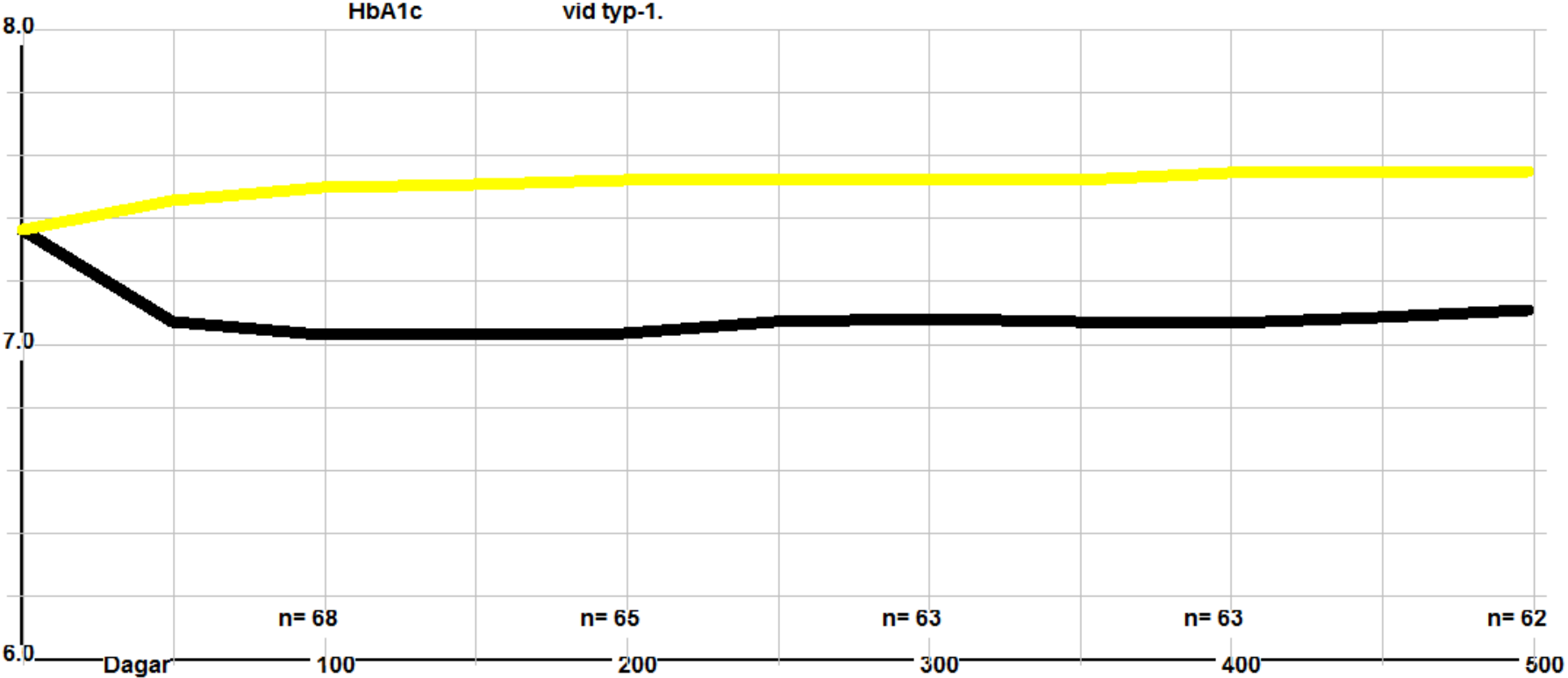
Uddevalla sjukhus HbA1c vid CSII 2009-01-01- 2009-12-31.
Median = 6.75 M = 6.89 Std = 0.96 N= 70 / P= 311 (22,5%)



Uddevalla. Ålder vid CSII typ 1 2009-01-01- 2009-12-31.
Median = 43.50 M = 42.16 Std = 11.21 N= 70 / P= 311

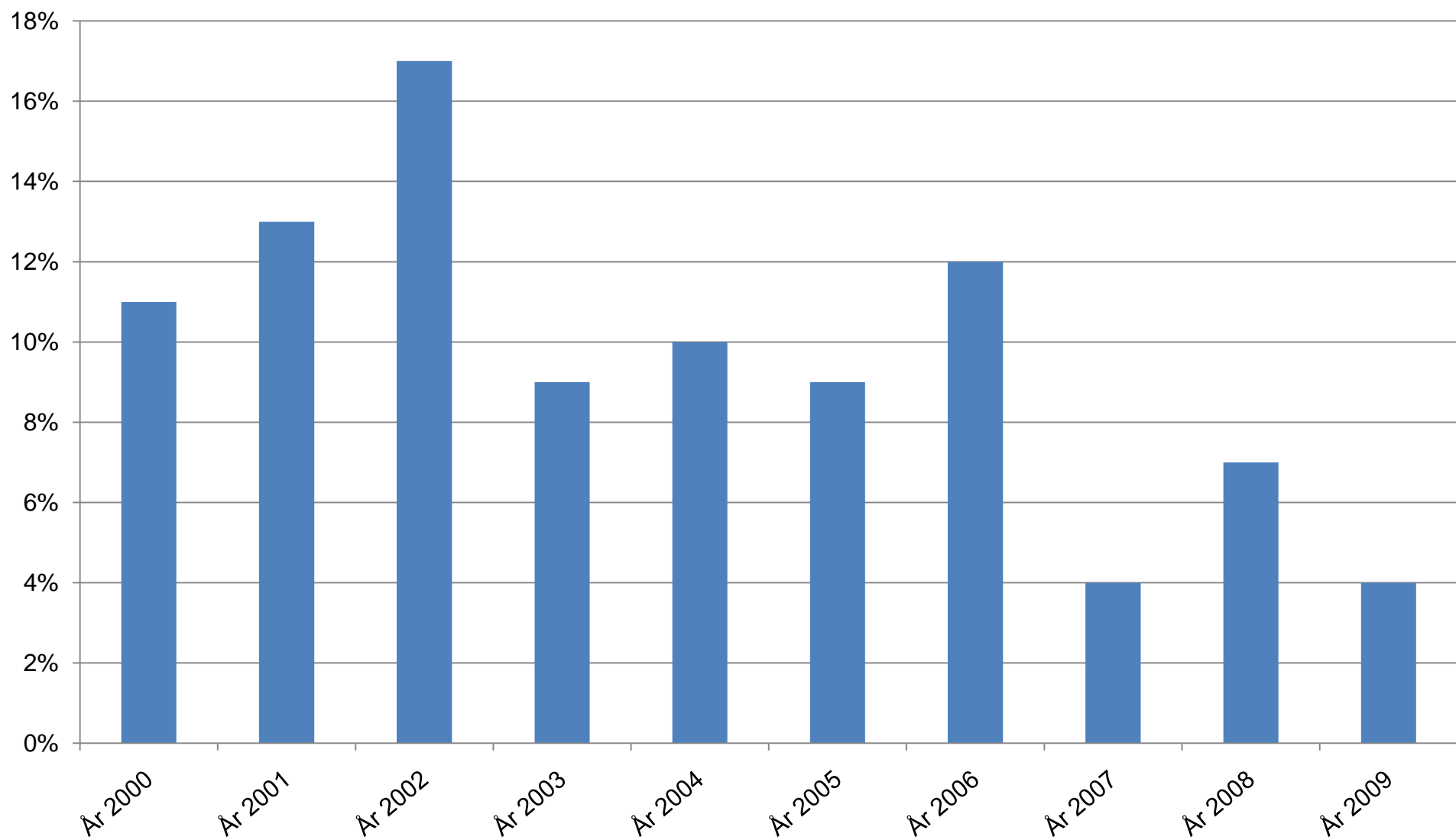


Uddevalla – pump typ 1



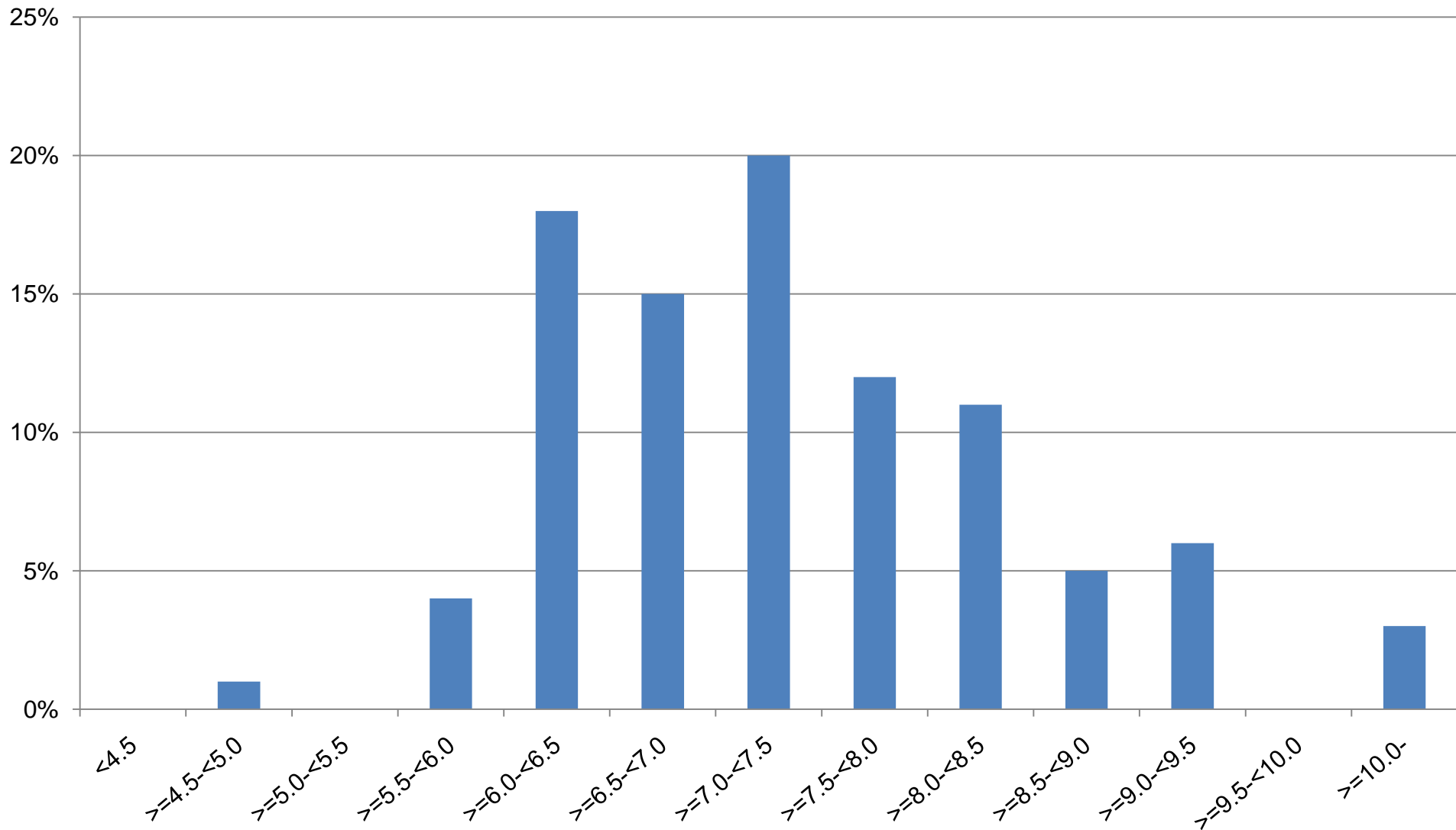
Eksjö Höglandssjukhuset Pumpstart/år 2000-01-01- 2009-12-31.

N= 122 / P= 607

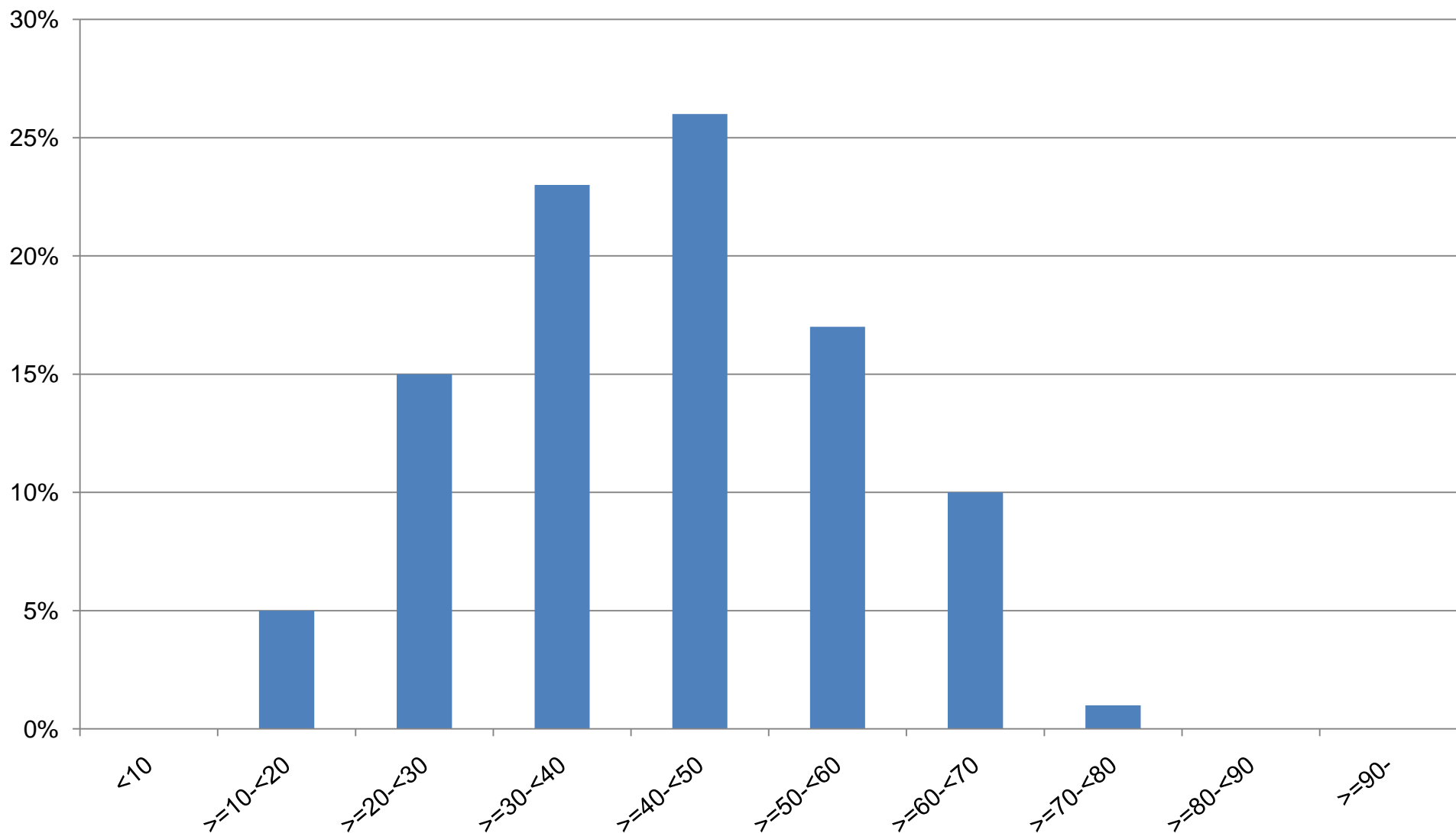


Eksjö Höglandssjukhuset. HbA1c vid CSII typ 1 2009-01-01- 2009-12-31.

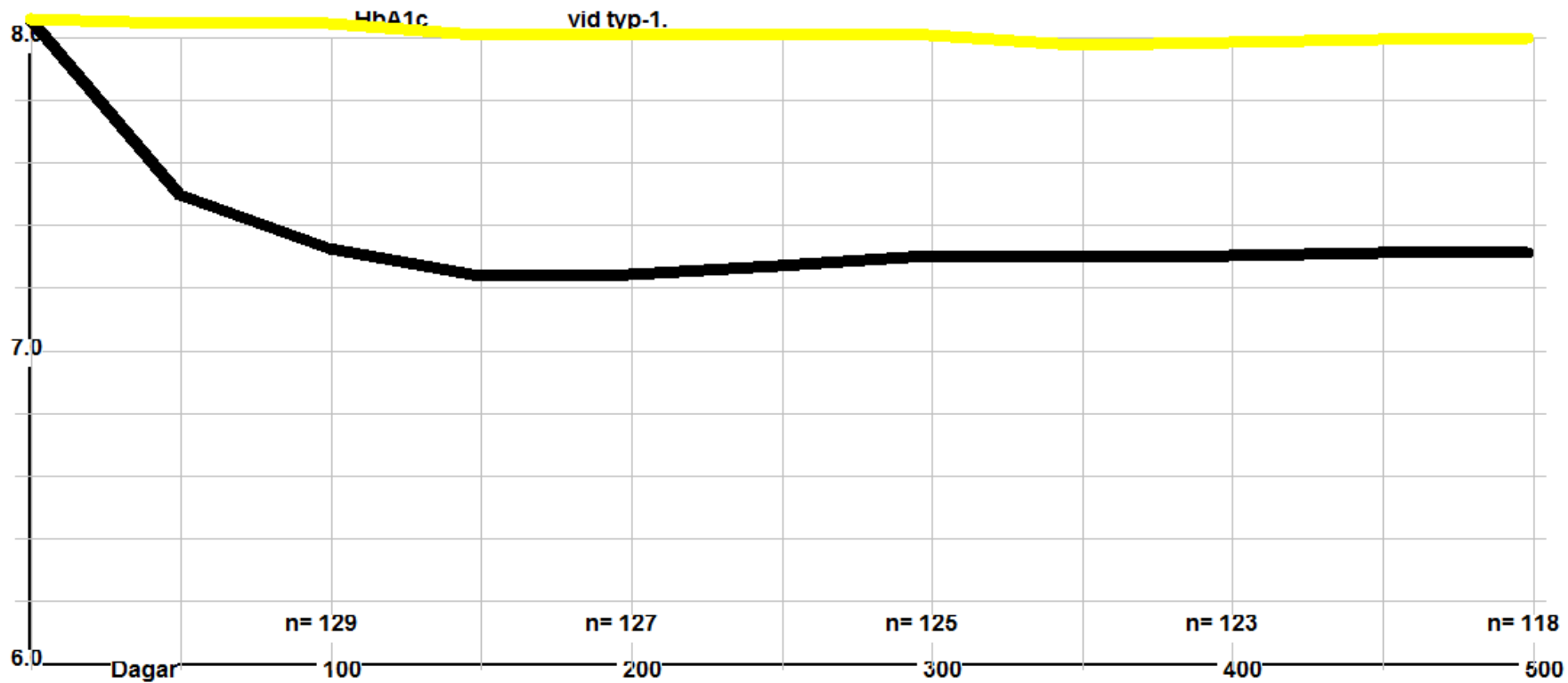
Median = 7.15 M = 7.32 Std = 1.16 N= 134 / P= 439 (30,5%)



Eksjö Högländssjukhuset. Ålder vid CSII typ 1 2009-01-01- 2009-12-31.
Median = 41.00 M = 41.69 Std = 13.70 N= 134 / P= 439 (30,5%)

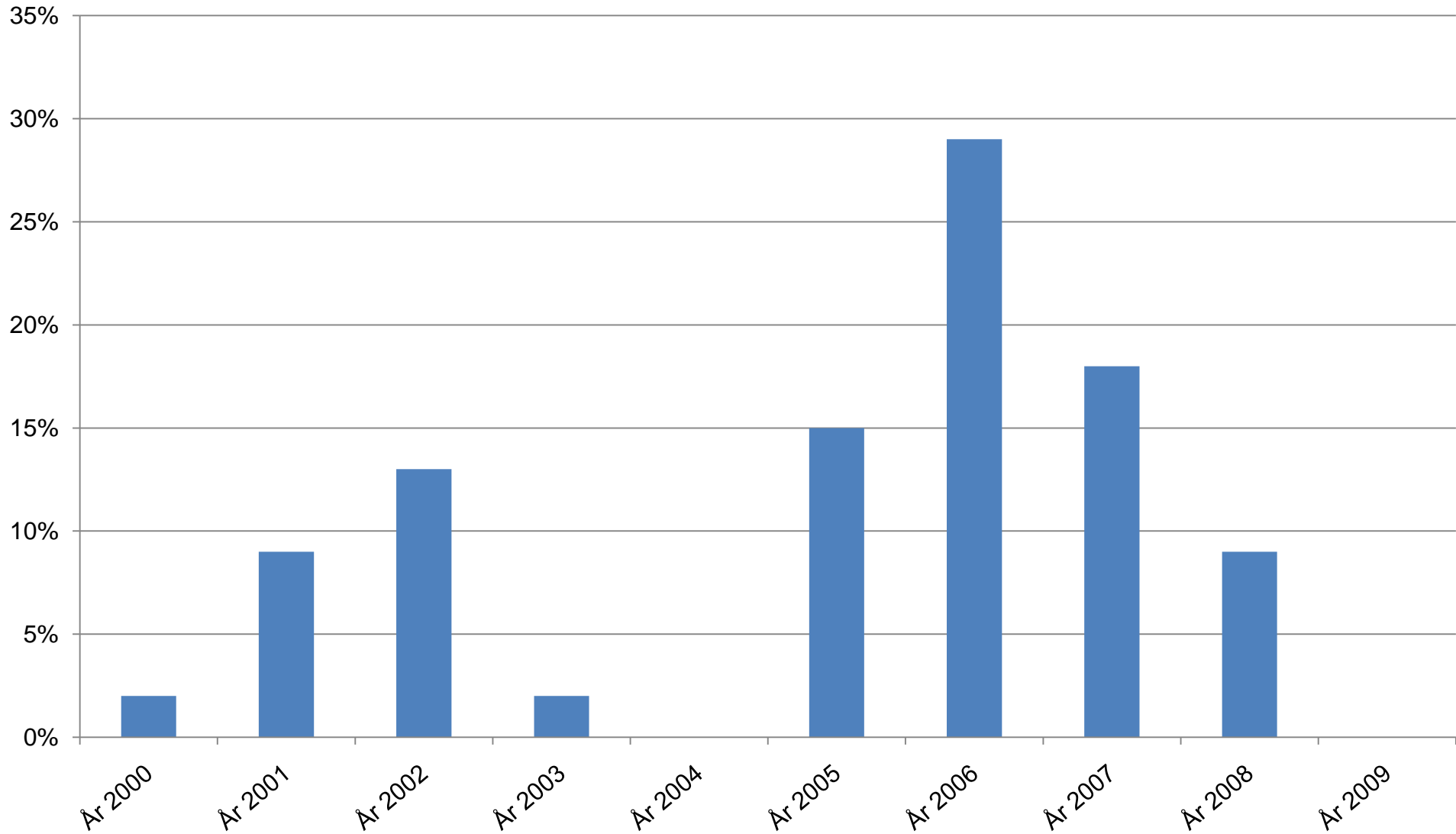


Eksjö – pump typ 1

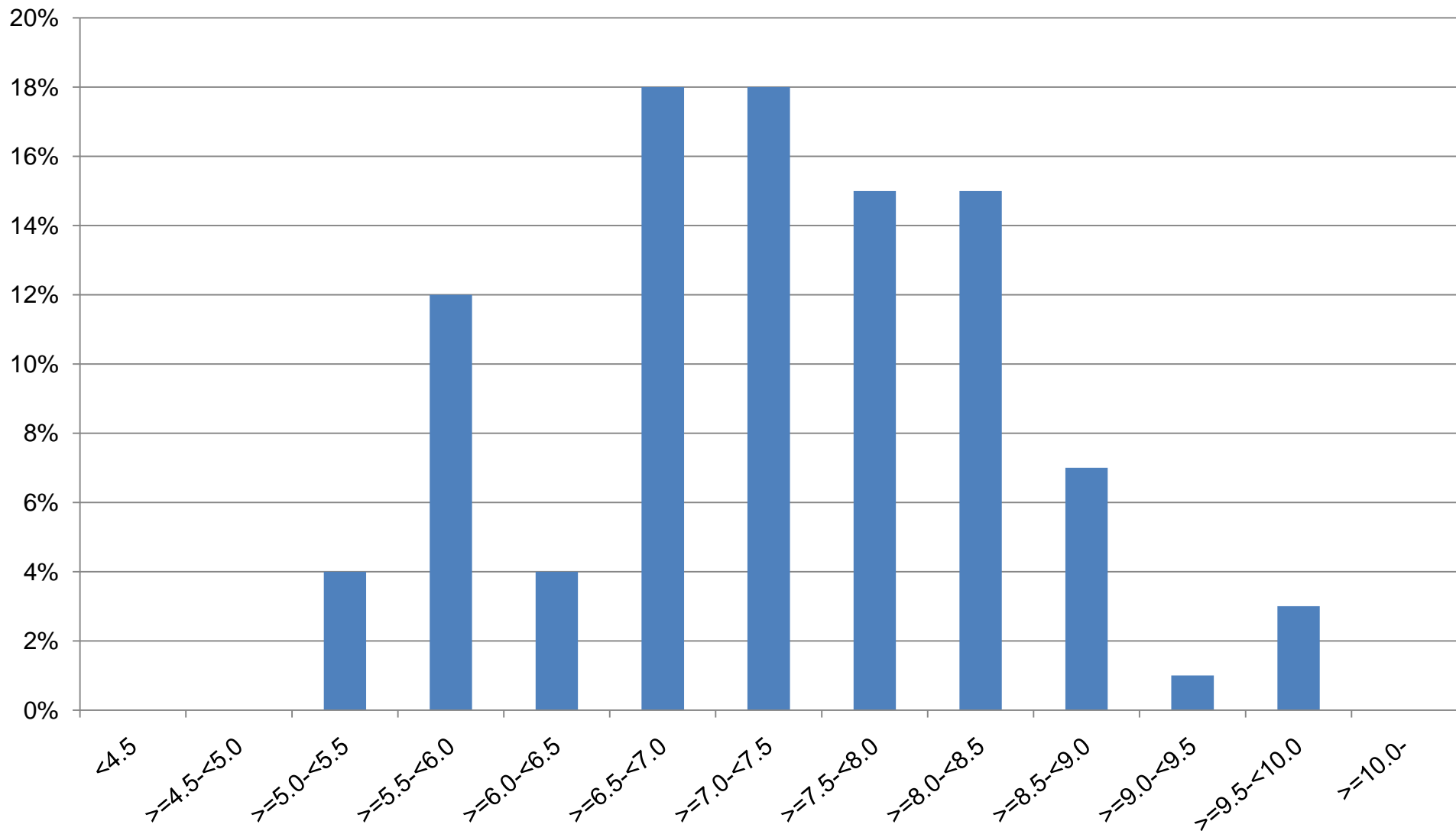


Alingsås sjukhus Pumpstart/år 2000- 2009.

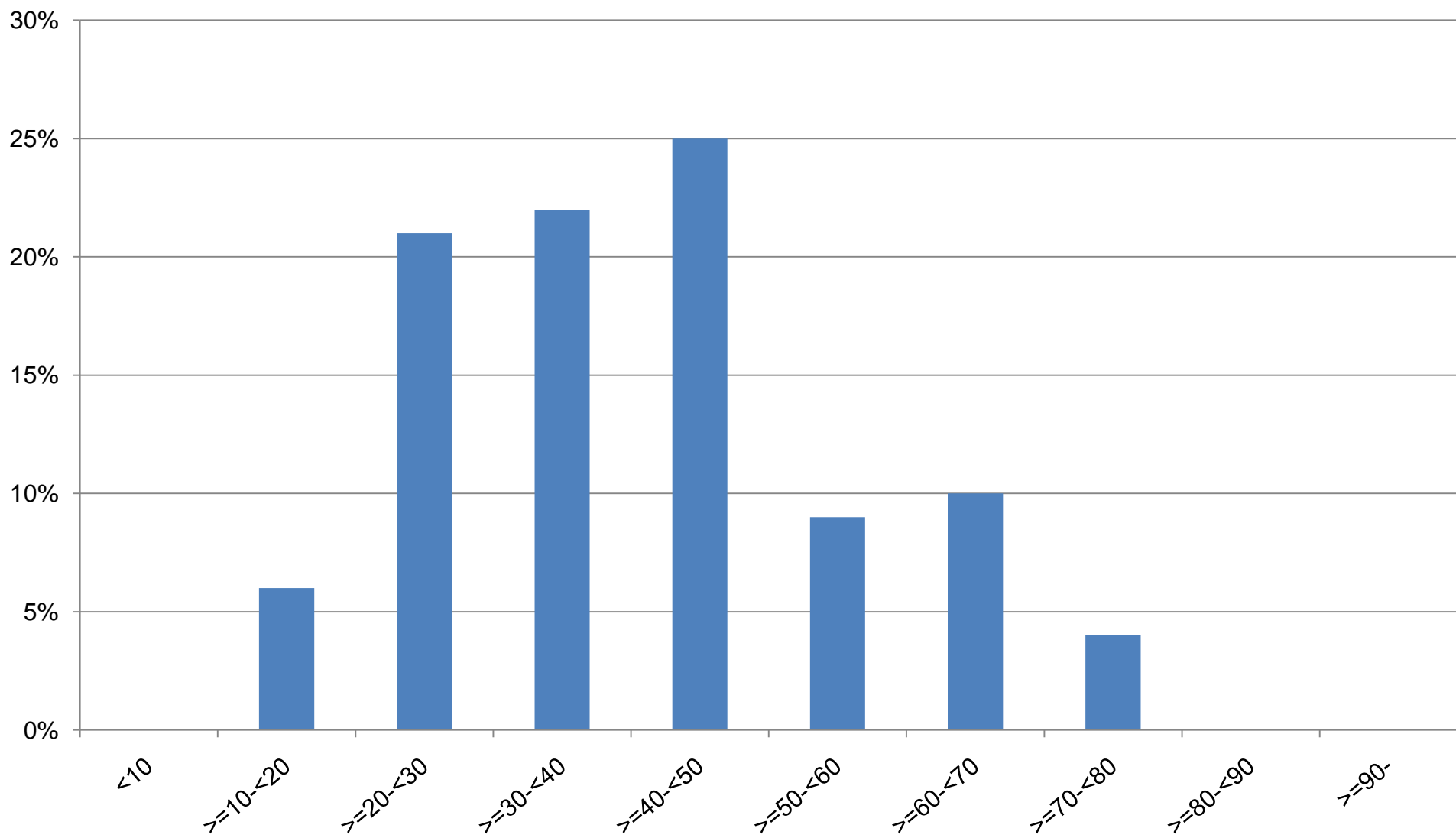
N= 44 / P= 412



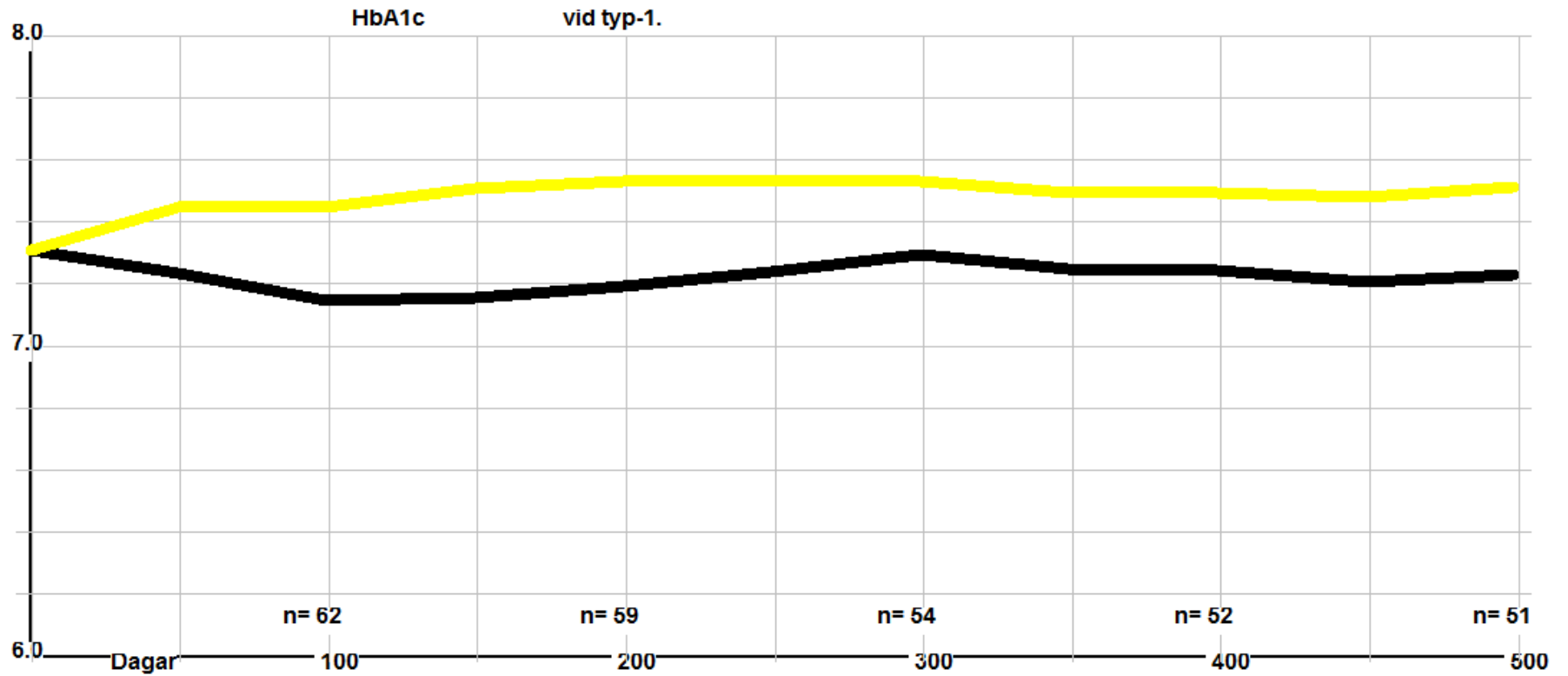
Alingsås sjukhus. HbA1c vid CSII typ 1 2009-01-01- 2009-12-31.
Median = 7.20 M = 7.23 Std = 1.09 N= 66 / P= 347 (19%)



Alingsås sjukhus. Ålder vid CSII typ 1 2009-01-01- 2009-12-31.
Median = 39.50 M = 41.05 Std = 15.44 N= 66 / P= 347 (19%)

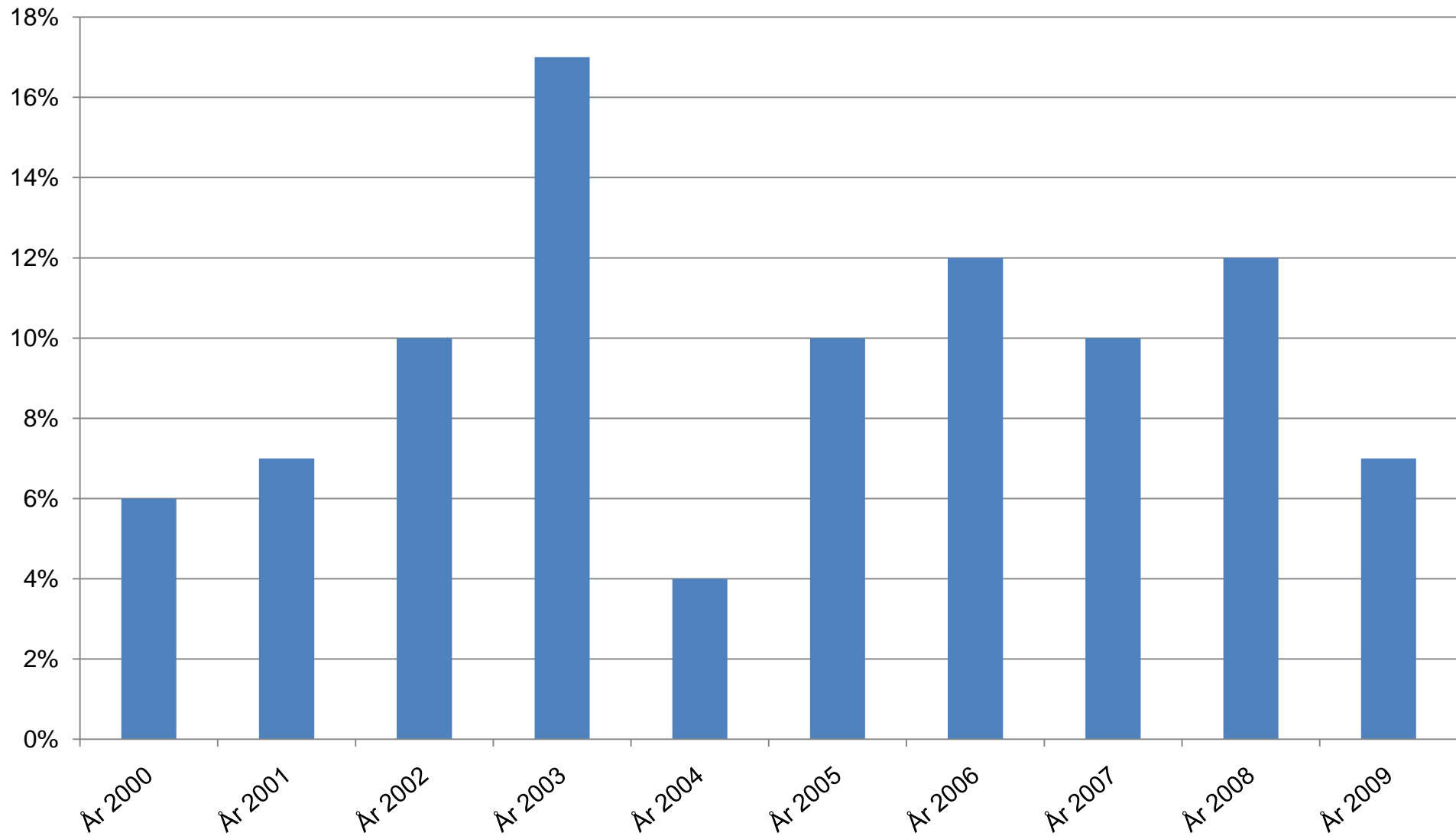


Alingsås – pump typ 1

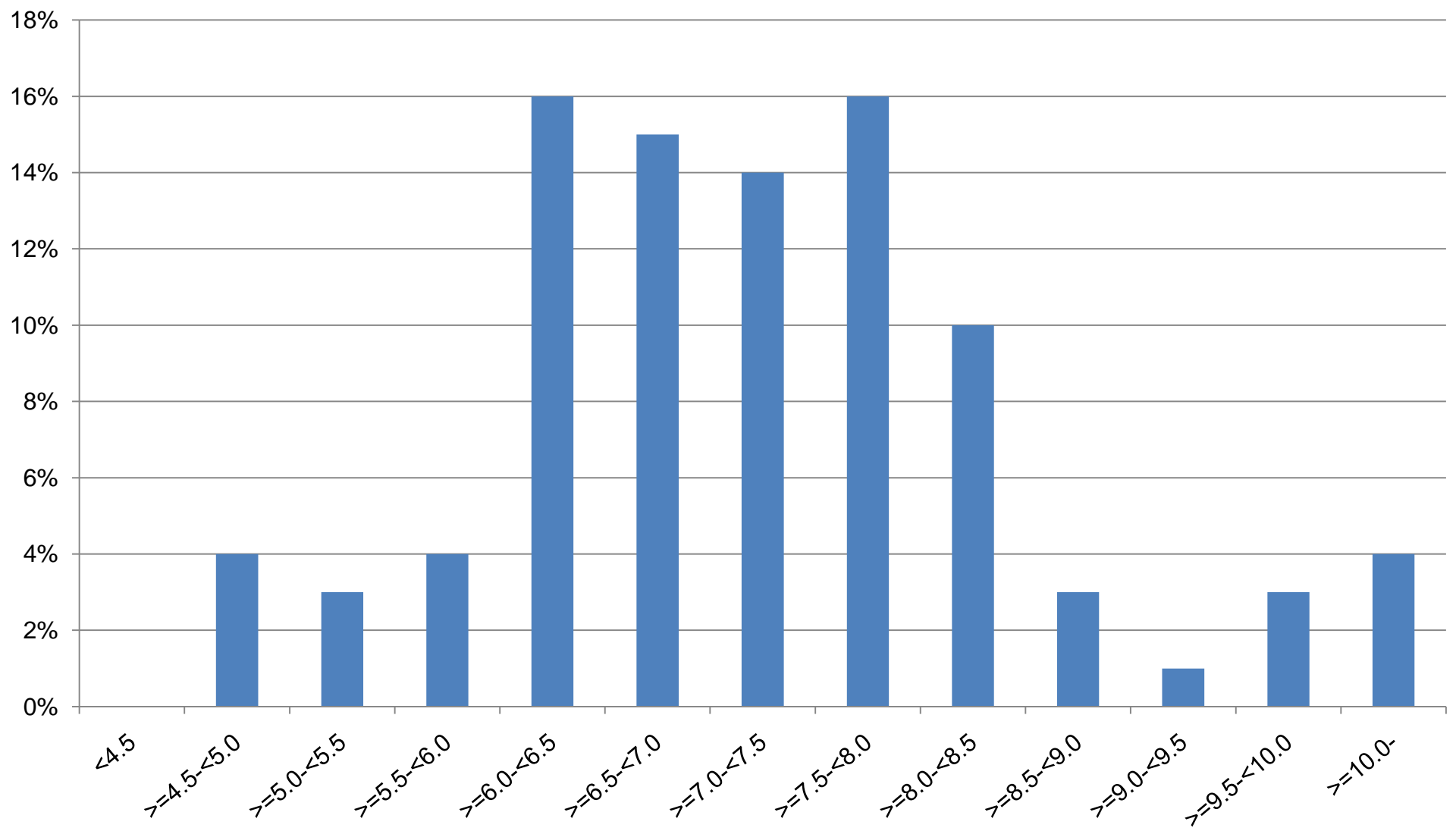


Borås lasarett Pumpstart/år 2000-01-01- 2009-12-31.

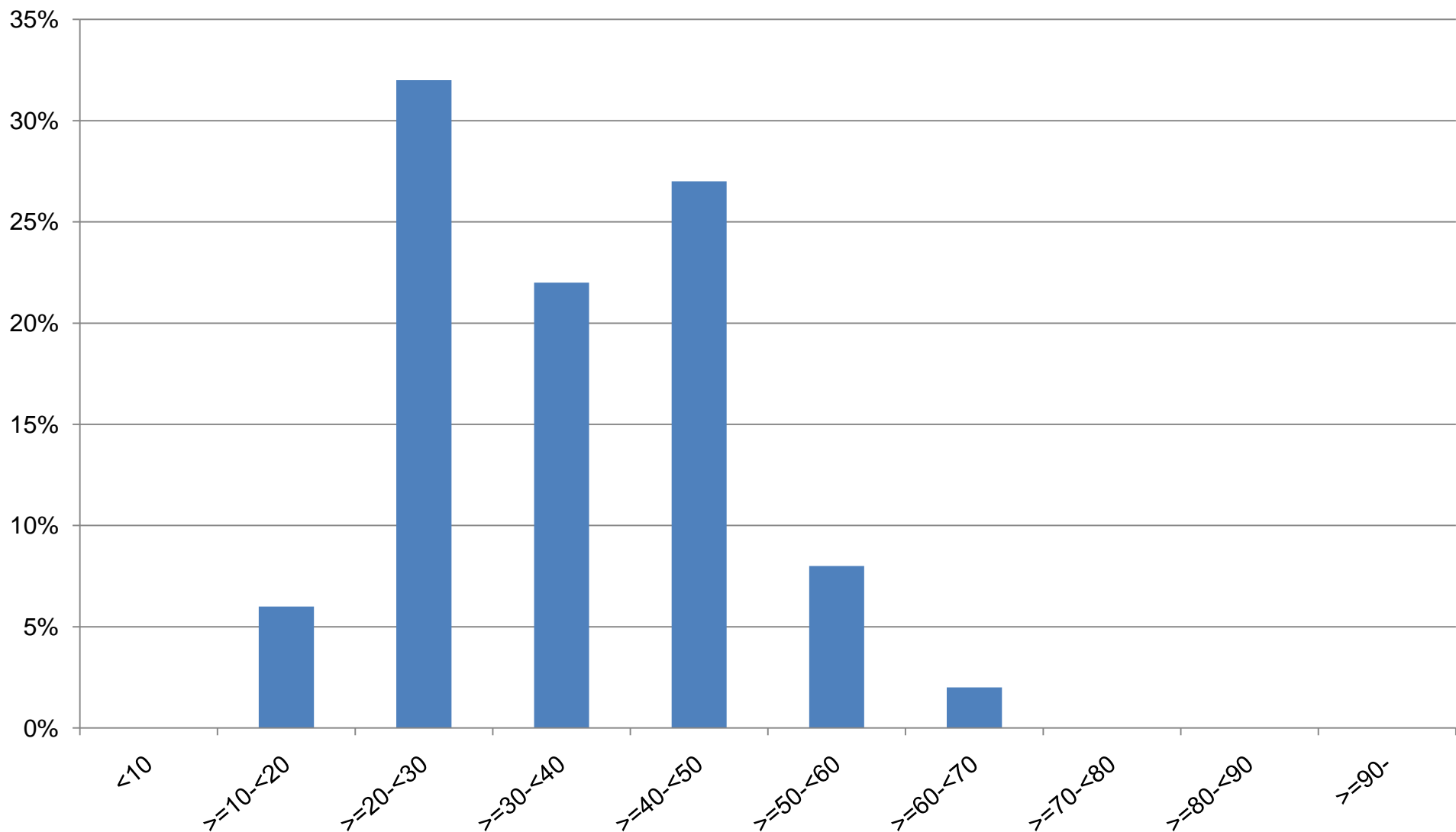
N= 110 / P= 1130



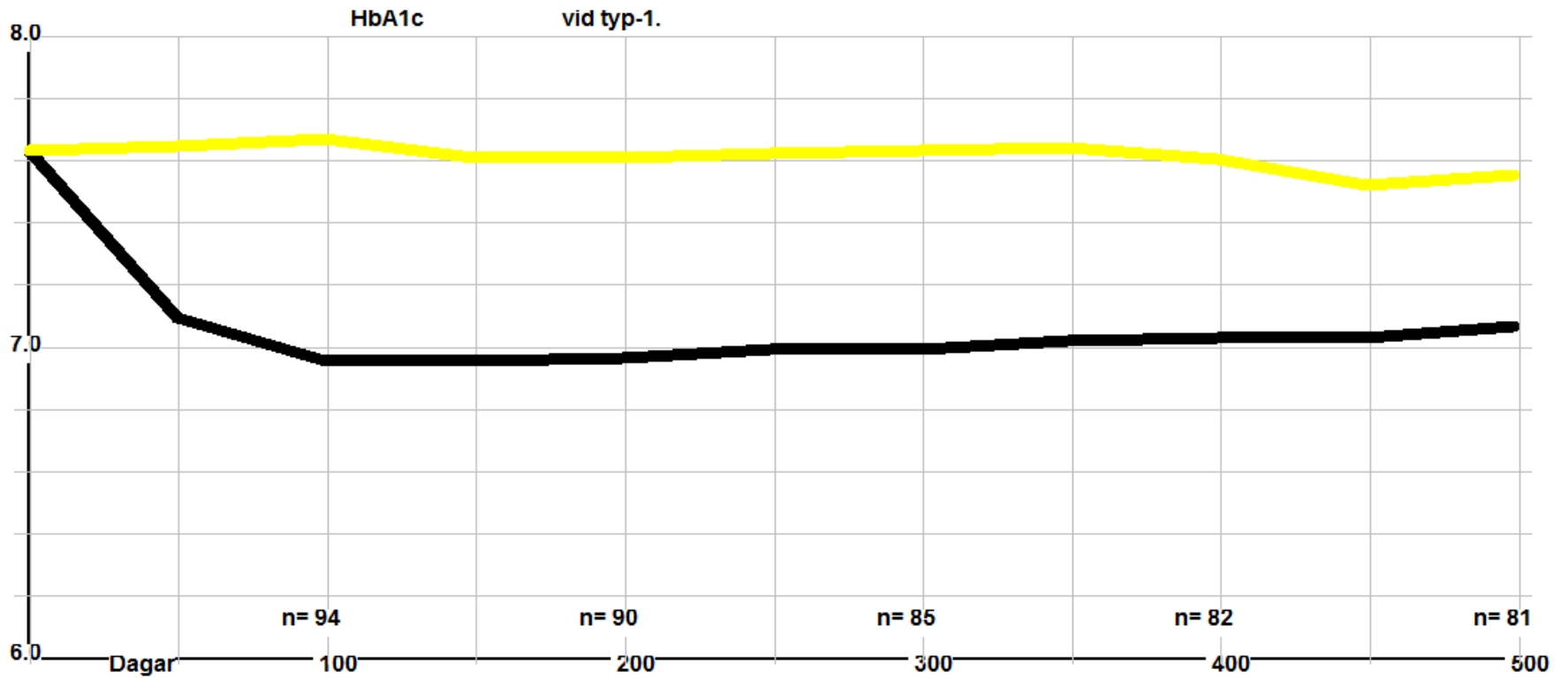
Borås lasarett. HbA1c vid CSII typ 1 2009-01-01- 2009-12-31.
Median = 7.10 M = 7.22 Std = 1.36 N= 109 / P= 854 (12%)



Borås lasarett. Ålder vid CSII typ 1 2009-01-01- 2009-12-31.
Median = 37.00 M = 35.65 Std = 12.48 N= 109 / P= 854 (12%)

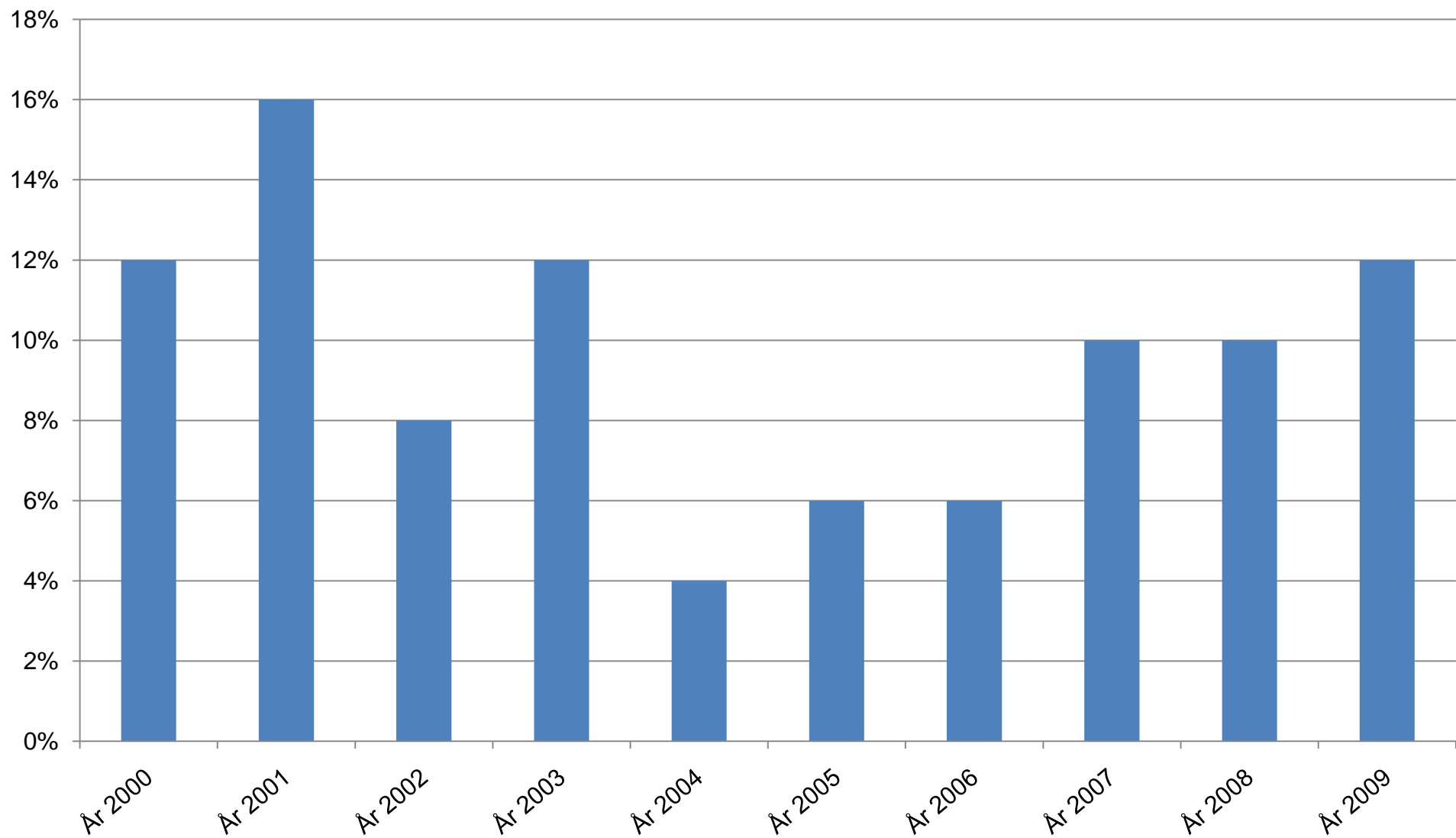


Borås – pump typ 1

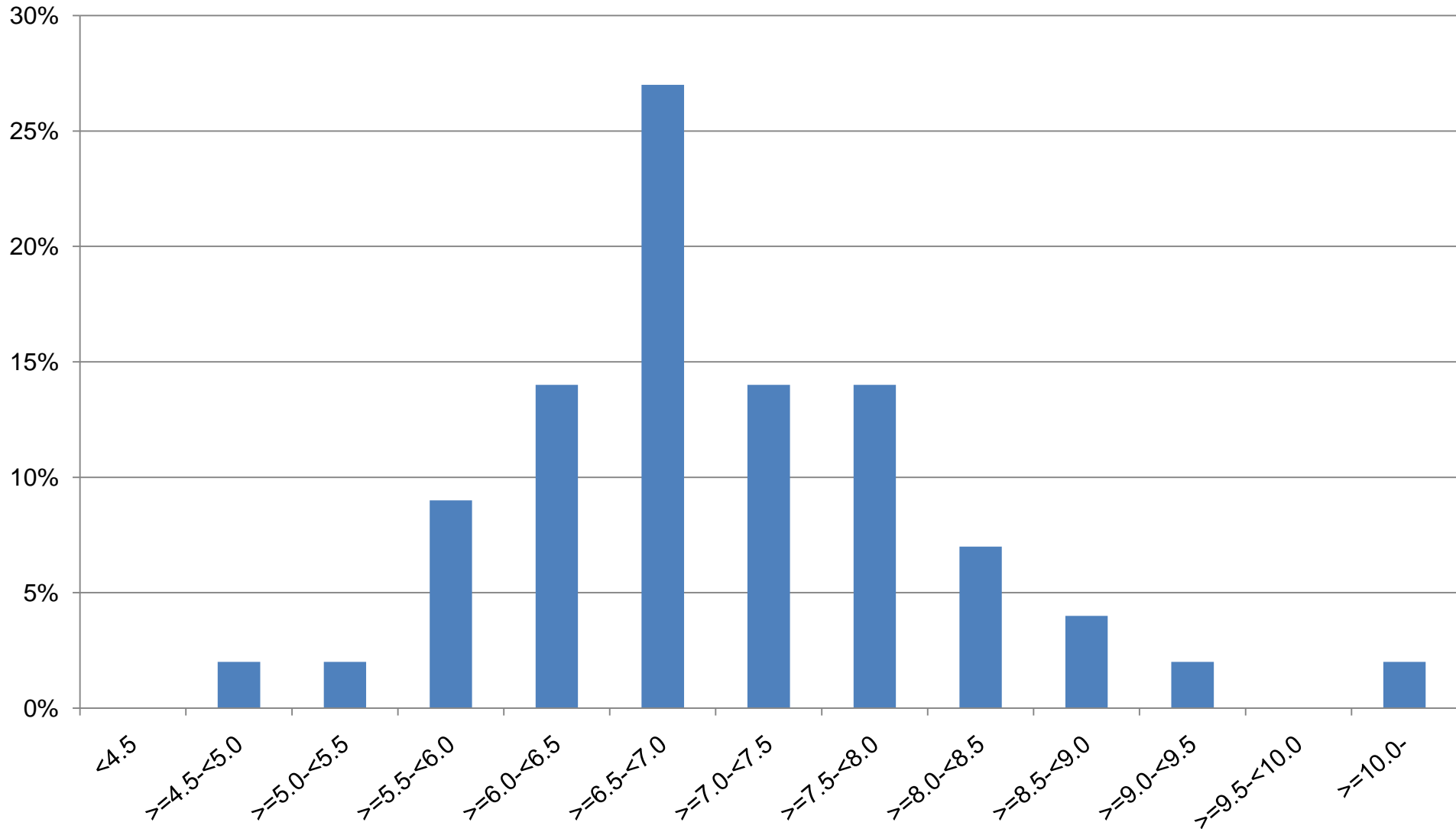


Sandviken sjukhus Pumpstart/år 2000-01-01- 2009-12-31.

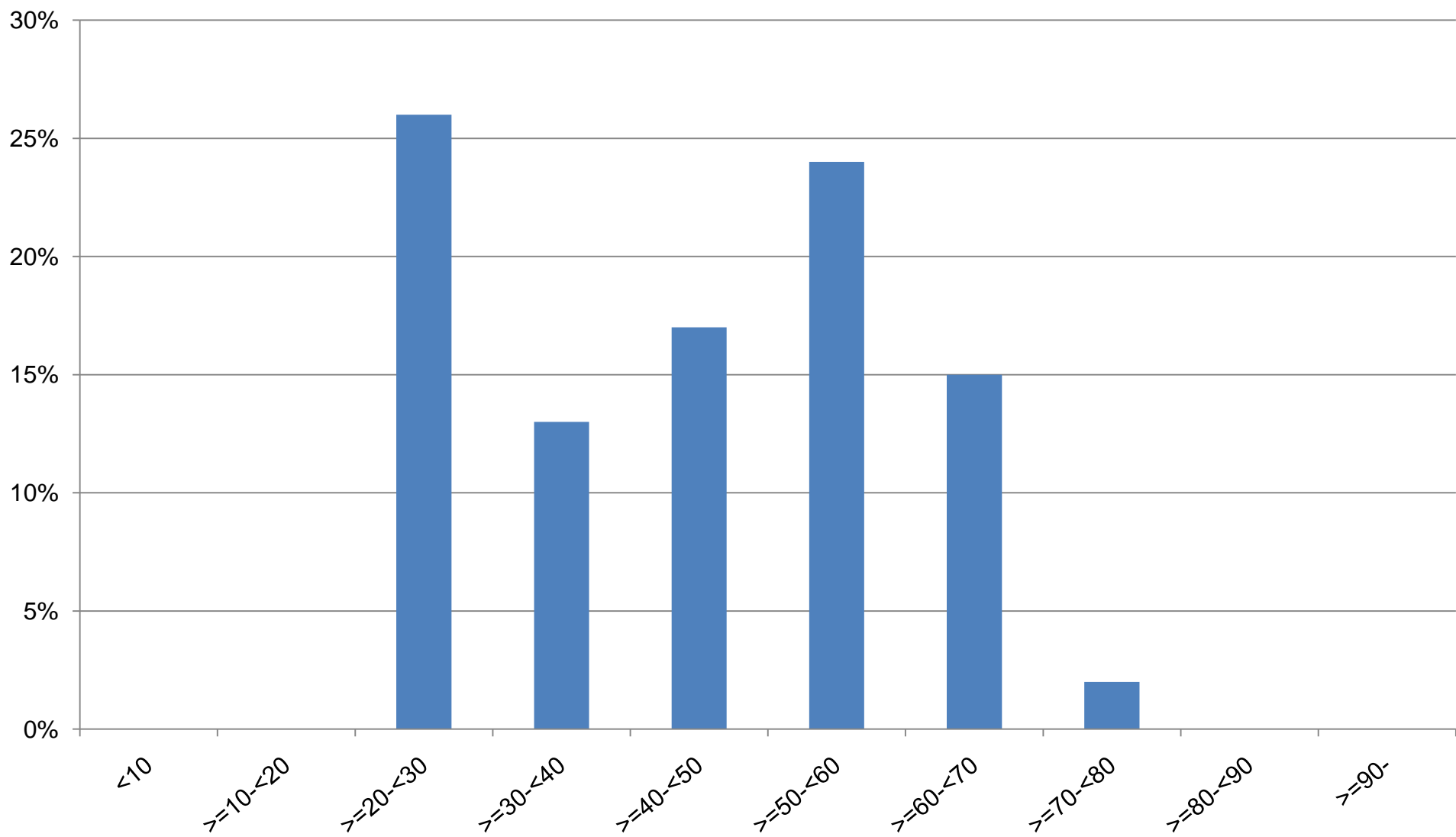
N= 48 / P= 299



Sandviken sjukhus. HbA1c vid CSII typ 1 2009-01-01- 2009-12-31.
Median = 6.90 M = 7.06 Std = 1.26 N= 43 / P= 229 (18,8%)

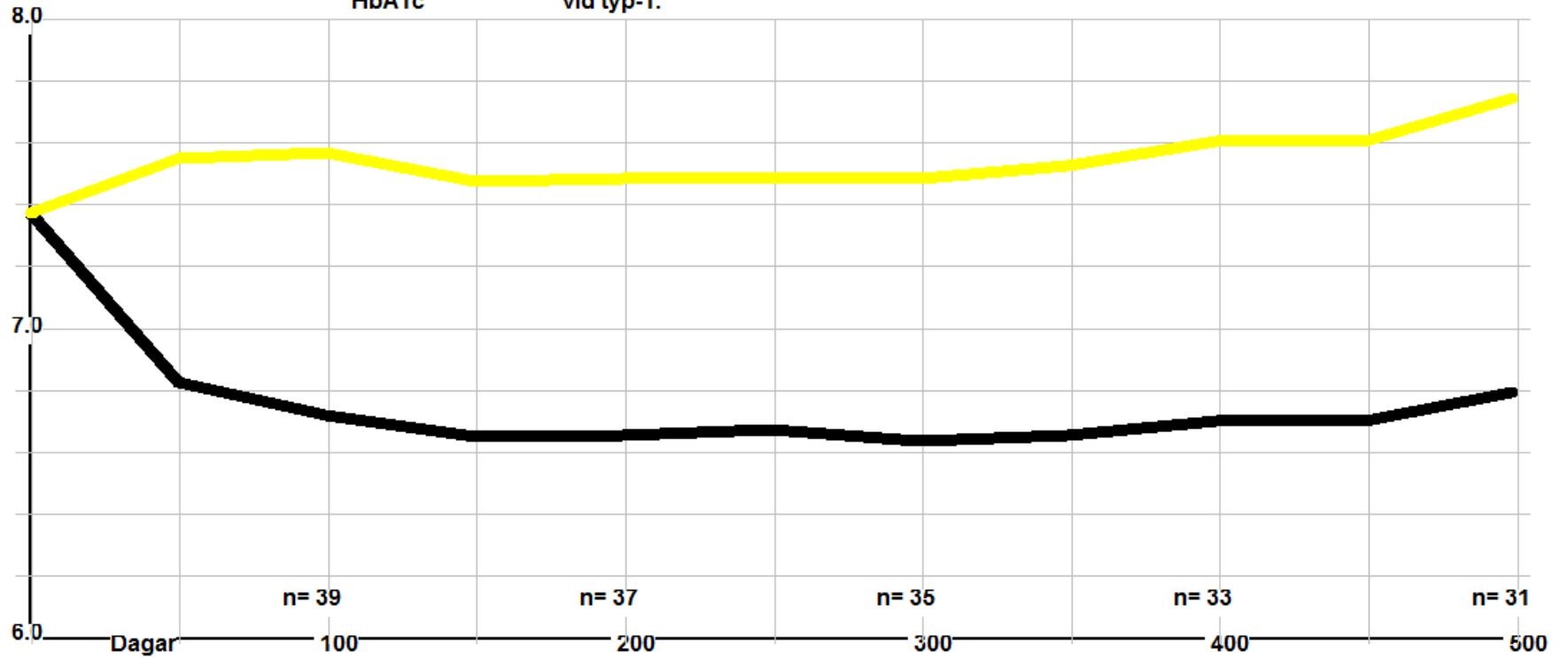


Sandviken sjukhus Ålder vid CSII 2009-01-01- 2009-12-31.
Median = 44.00 M = 43.09 Std = 15.52 N= 45 / P= 229



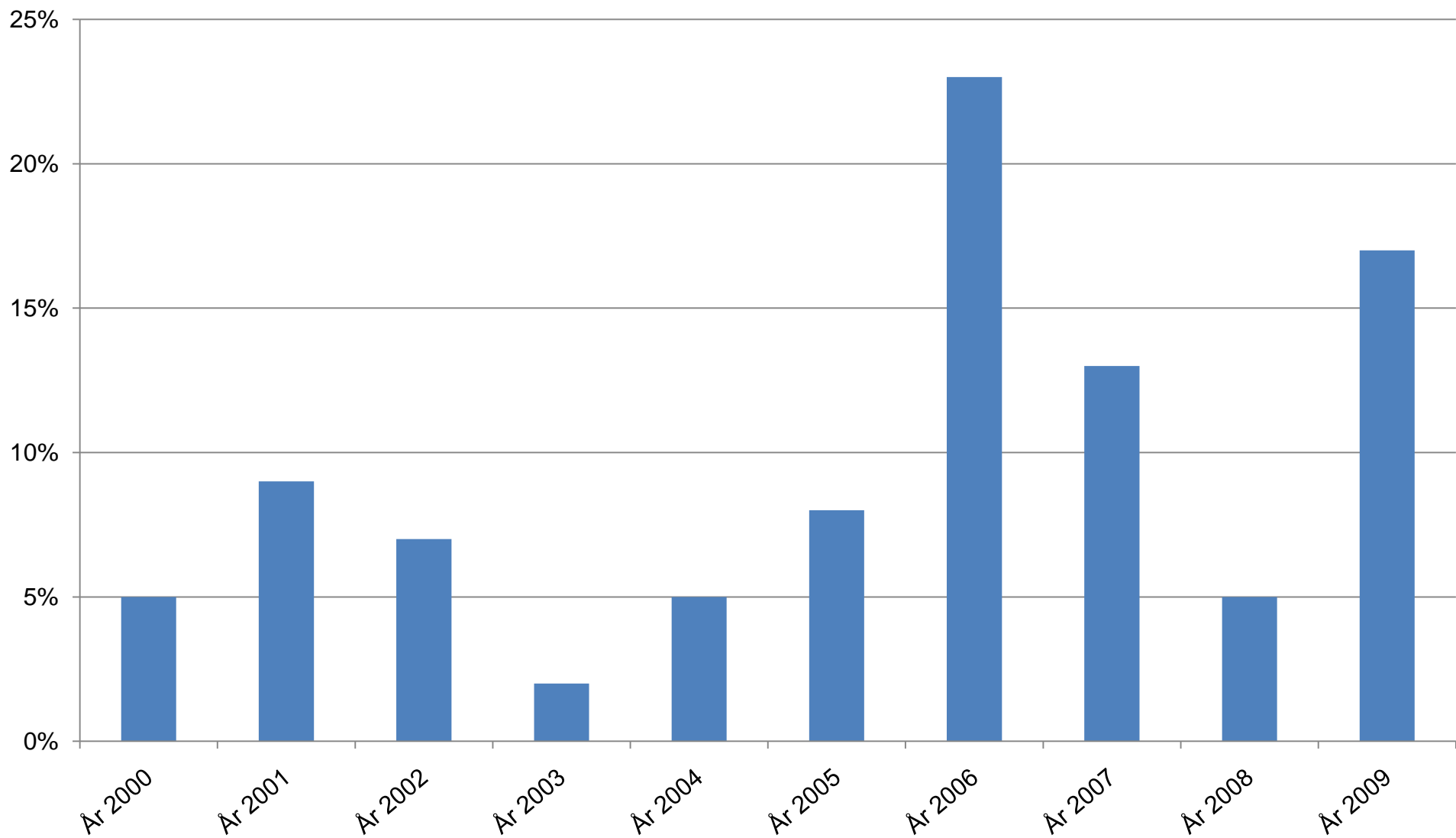
Sandviken – pump typ 1

HbA1c vid typ-1.

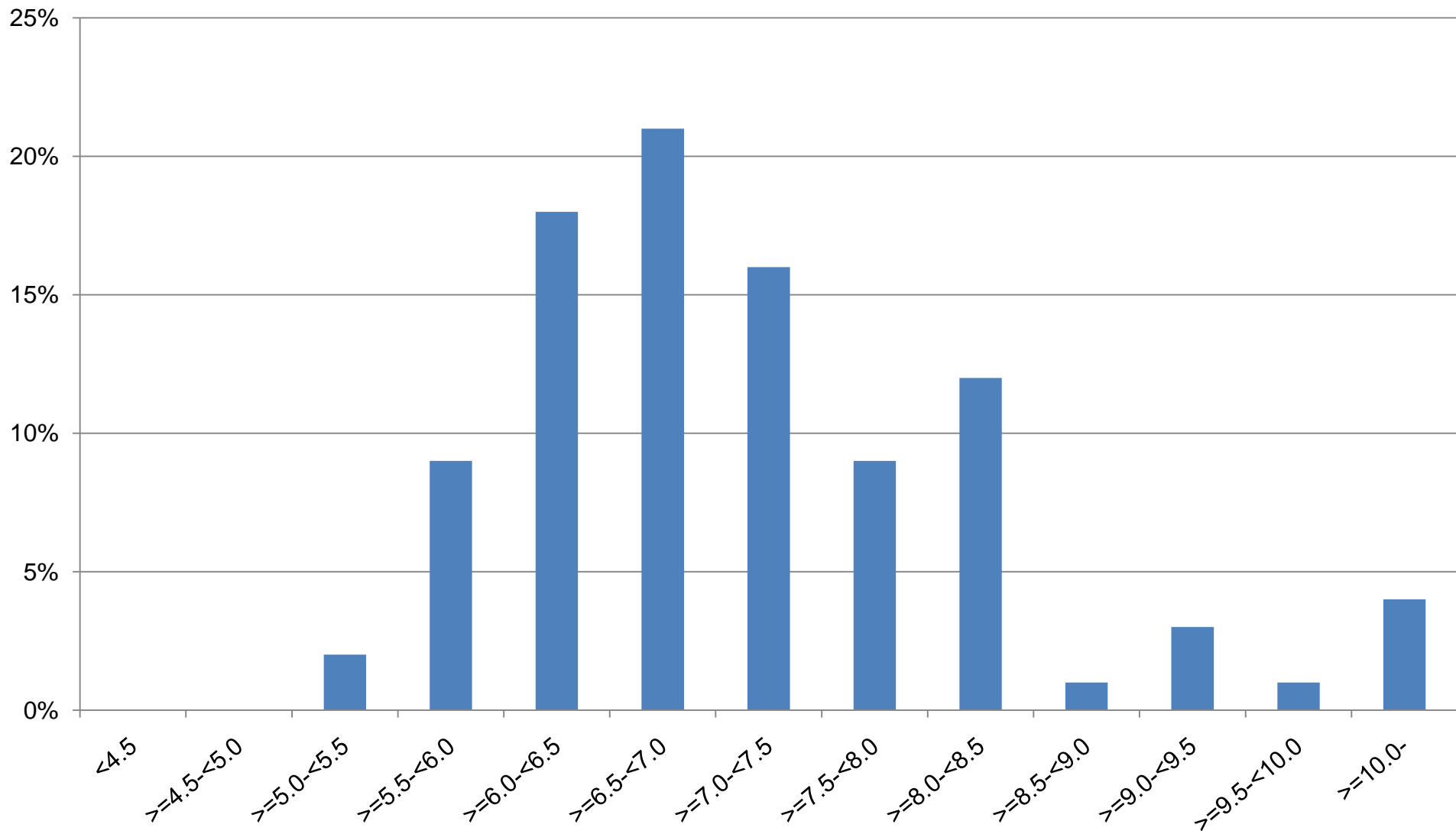


Gävle sjukhus Pumpstart/år 2000-01-01- 2009-12-31.

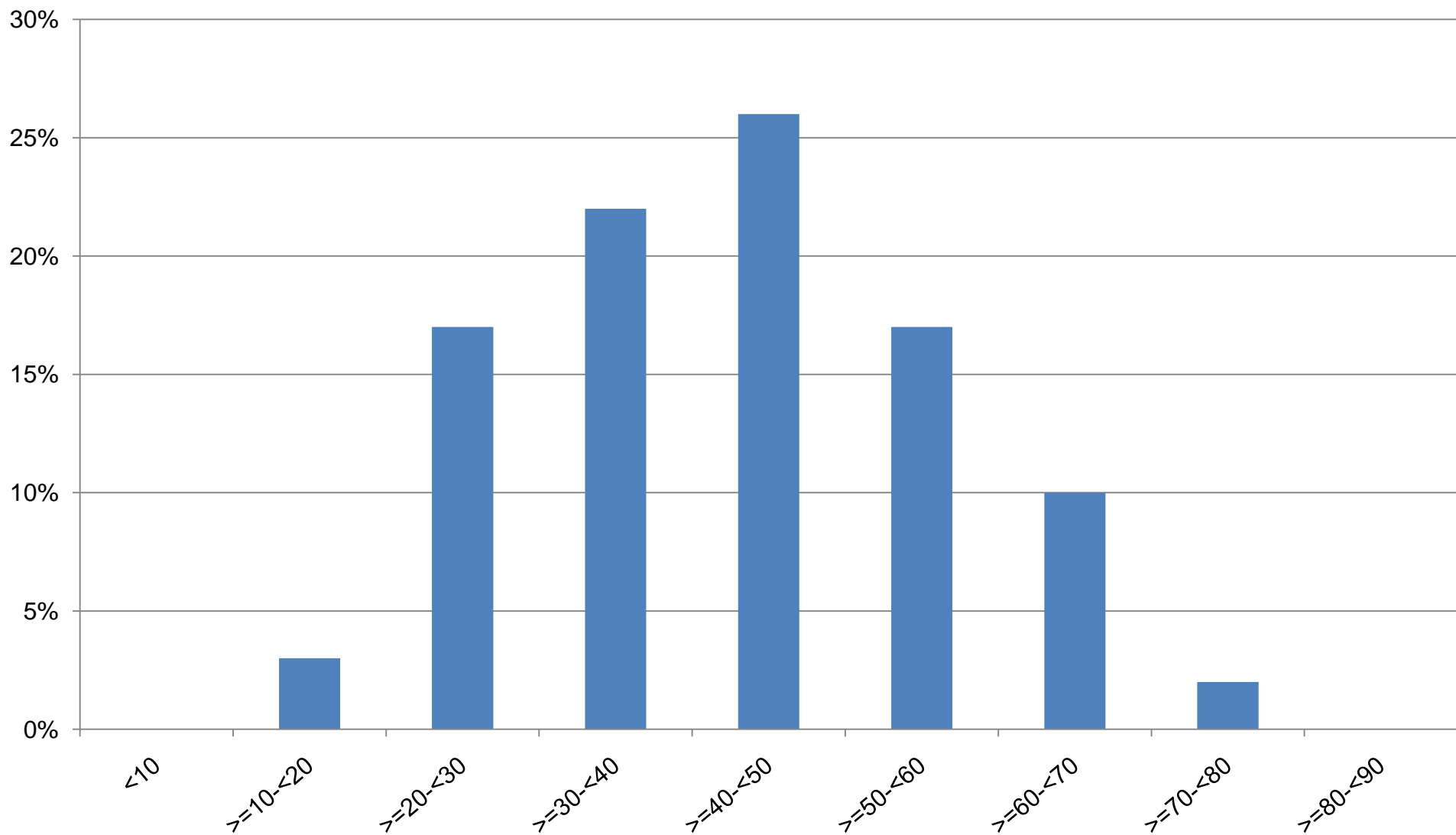
N= 101 / P= 532



Gävle sjukhus. HbA1c vid CSII typ 1 2009-01-01- 2009-12-31.
Median = 6.85 M = 7.11 Std = 1.23 N= 92 / P= 374 (24,6%)



Gävle sjukhus. Ålder vid CSII typ 1 2009-01-01- 2009-12-31.
Median = 42.00 M = 42.94 Std = 15.47 N= 94 / P= 374



Gävle – pump typ 1

